



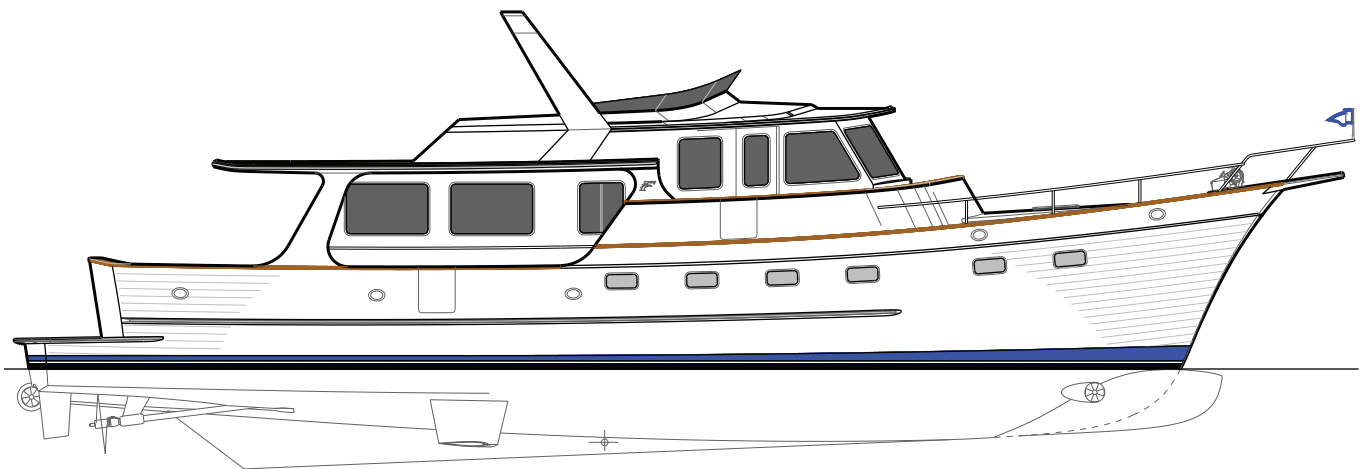
FLEMING YACHTS

THE ULTIMATE CRUISING YACHT.

PRESS RELEASE

FOR MORE INFORMATION PLEASE CONTACT:

Nicky Fleming
Fleming Yachts
1760 Monrovia Avenue
Suite A18
Costa Mesa, CA 92627
+1-949-645-1024
nicky@flemingyachts.com



Fleming Yachts announces the all-new Fleming 58

July 31, 2011 - Fleming Yachts is pleased to announce the addition of the all-new Fleming 58 to its line of 55, 65 and 78 foot models. Construction will begin this fall with the first boat scheduled to complete in late 2012. Offered with a number of interior arrangements including one with a full width, midships owner's stateroom, the Fleming 58 provides an ideal intermediate size between the existing 55 and 65.

Fleming Yachts announces the all-new Fleming 58

Her tank tested semi-displacement hull will be driven by twin Cummins QSC 500 common-rail diesel engines; and MAN R6-800 engines will be offered as an option.

Compared to her smaller sister the 58 offers increased headroom in the engine room, an extended waterline length and a more spacious interior due to her increased beam. The pilot-house has room for twin Stidd helm chairs. The cockpit is capacious, and the expanded flybridge will accept a larger tender, BBQ, and additional fridge/freezer space.

The 58 employs much of the same technology used in the Fleming 65 including the Boning ship monitoring system with two 15" color touchscreens, Hypro fly-by-wire precision power steering, and Sea Torque's enclosed shaft system.

"While this is an all new, highly advanced, modern yacht," says Tony Fleming, "we have retained the same fundamental features that have made Fleming so successful over the past 25 years. Our dedicated pilothouse, low profile, seakindly semi-displacement hull and twin engine power will continue to be signatures of the Fleming line."

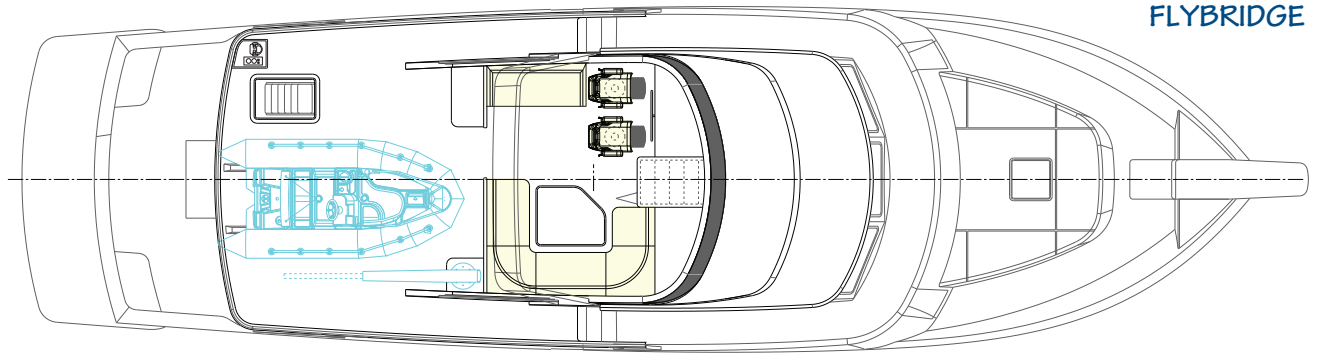
SPECIFICATIONS:	Imperial	Metric
LOA (hull)	59'	17.98 m
LWL	56'8"	17.31 m
Beam	17'6"	5.36 m
Draft	4'11"	1.22 m
Displacement (light)	88,000 lbs.	39916.1 kg
Displacement (full)	105,600 lbs.	47,899.3 kg
Fuel	1450 US gal	5488.8 kg
Water	317 US gal	1200 liters
Black	200 US gal	757 liters



FLEMING YACHTS

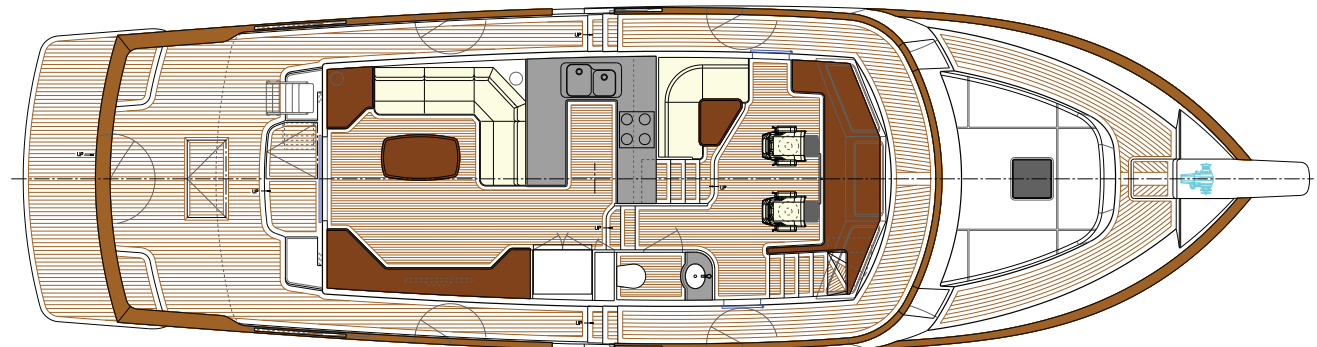
THE ULTIMATE CRUISING YACHT.

Fleming 58 General Arrangement



FLYBRIDGE

Features a BBQ, Aft Control Station, twin Stidd Helm Seats, large Tender and Hydraulic Davit

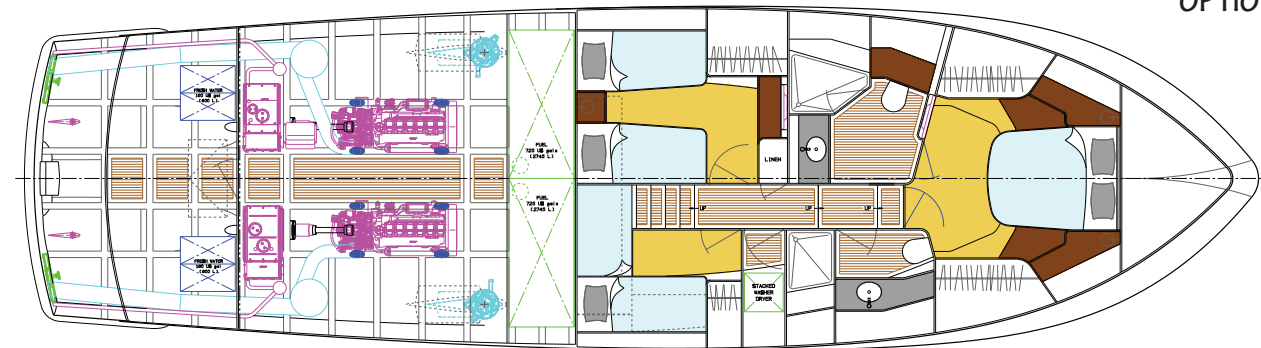


MAIN DECK

Pilothouse with twin Stidd Helm Seats and Dayhead
Large Cockpit with easy Engine Room access

Foredeck with additional Storage Lockers

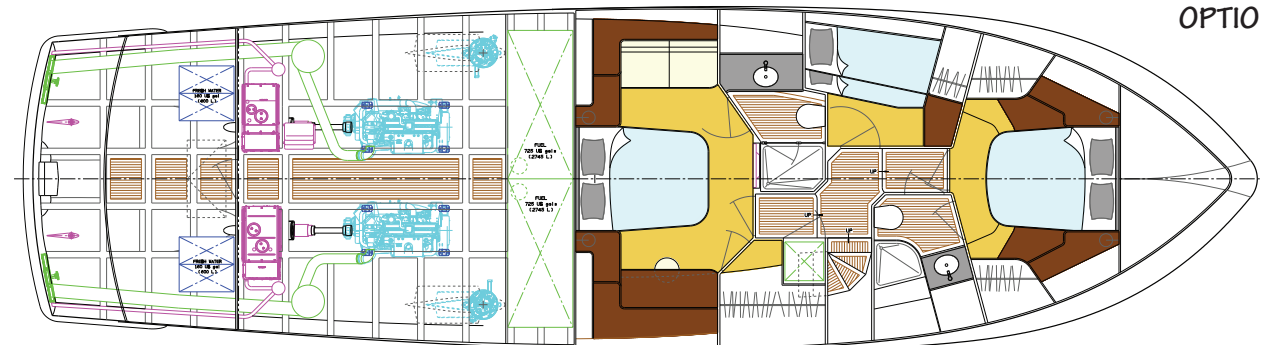
ENGINE ROOM & ACCOMMODATION OPTION A



Spacious walk-in Engine Room with
"Fleming" Standard Equipment & Systems
Shown with optional twin MAN R6-800 Engines

Traditional "Fleming" layout with larger Cabins and Laundry Room

ENGINE ROOM & ACCOMMODATION OPTION B



Shown with standard twin Cummins QSC-500 Engines

New layout option with Full Beam Master Cabin