



Presents as new, with a fantastic service history

Lithium house battery set up, Inverter, Solar... this is the quiet cruising cat of your dreams.

Boat Details

| | |
|----------------------|------------------|
| Boat Type | Catamaran |
| Build | Lagoon |
| Model | 450s |
| Year | 2018 |
| Location | North Island |
| Hull Type | Catamaran |
| Hull Material | Fibreglass (GRP) |
| Fuel Type | Diesel |

Mechanical

| | |
|-----------------------|------------|
| Engine Type | Inboard |
| Engine Brand | Yanmar |
| Drive Type | Sail Drive |
| No. of engines | 2 |
| Horsepower | 57 HP |
| Hours | 2125 Hrs |
| Cruising speed | 8 Knots |
| Max. speed | 10 Knots |

Specifications

| | |
|-------------------------|---------|
| LOA | 13.96M |
| Beam | 7.87M |
| Draft | 1.3M |
| Bridge Clearance | 22.33M |
| Weight | 15000kg |
| Fuel | 1040L |
| Water | 350L |
| Holding | 240L |

Accommodation

| | |
|----------------|-------------|
| Cabins | 3 |
| Berths | 6 |
| Heads | 3 |
| Showers | 3 + cockpit |

On Deck

| | |
|---------------------|--------------------------|
| Tender | 3.5m Inflatable Boat Co. |
| Outboard | 20hp Yamaha |
| Anchor | Rocna 35kg |
| Chain / Warp | 90m Chain +20 Rope |

Features

- Eberspacher Diesel Heating
- Dive Compressor
- 800AH Lithium House Batteries
- 4 x 120w Solar Panels on Coachroof + Solar frame over tender (2,3Kw total)
- 60 L/ph Watermaker

✔ Electronics

B&G 12" Zeus3 at helm + Nav Station
SIMRAD QS80 Autopilot Controls at Nav Station
B&G V50 VHF + Atlantis 270 Handheld VHF
B&G 4G Radar + AIS 500

✔ Electrical Systems

800AH Lithium House Battery
2300w Solar Panels
Inverter

✔ Interior

Light Oak Woodwork
Renewed Interior Upholstery 2023

✔ Safety Equipment

8 x LifeJackets
4 x Fire Extinguishers (2025)
EPIRB
Liferaft

✔ On Deck (Additional)

1 x Cockpit Fridge
1 x Cockpit Fridge Drawer
Dive Compressor
Fwd Cockpit + Awning

✔ Sails & Rigging

Square Top Main - 81m2
Furling Genoa - 51m2
New UV Strip June '25

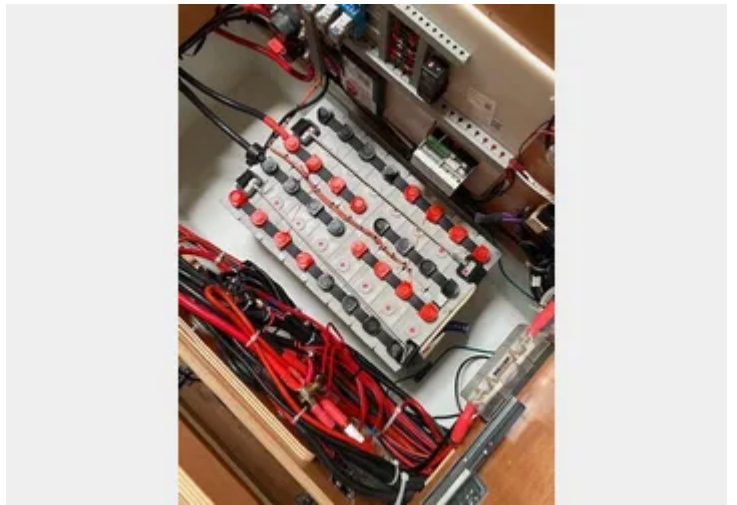
✔ Galley

3 Burner Gas Hob
New Eno Gas Oven Jan 2026
2 x Stainless Steel Sinks
1 x 130L Fridge
1 x Deep Freezer









Presents as new, with a fantastic service history

Lithium house battery set up, Inverter, Solar... this is the quiet cruising cat of your dreams.

Orakei Marine is proud to present 'Kiwa'; fully optimized, and genuinely turn-key, she is a true blue water ocean cruiser, sailed by the original owners down from the factory in France, she now has NZ taxes paid and lives permanently in New Zealand. This sought-after 3-cabin Owner's Version beautifully blends Lagoon's renowned space and comfort with the sleeker, more manageable Sportop configuration.

Step inside to a modern, light oak interior featuring recently refurbished interior upholstery and a fully equipped galley complete with a brand-new oven, multiple fridges, a freezer, and an integrated washing machine providing liveaboard cruising capability.

Unlike standard factory models, 'Kiwa' has been meticulously upgraded to deliver absolute off-grid independence and peace of mind:

-

True Off-Grid Power: Say goodbye to noisy generators. Equipped with a massive 2.3 kW solar array (13 panels) paired with a high-capacity Lithium battery conversion (Opua 2022) and inverter, you can run your systems silently on nature's power.

-

Water & Comfort On Demand: A Dessalator watermaker (60L/hr) and an integrated Eberspacher diesel heating system ensure complete comfort in any climate, year-round.

-

Performance & Handling: Upgraded twin 57HP Yanmar engines with 3-blade folding props deliver exceptional efficiency under power, while an all-electric winch package at the helm makes short-handed sailing an absolute breeze.

-

Uncompromised Structural Integrity: Rest easy knowing the forward bulkheads have been fully reinforced using factory-validated VPLP methodology and certified back in 2021.

-

Ready to Sail Away: Sold with a 3.5m RIB on aft davits and 20HP Yamaha, a 32kg Rocna anchor with 90m of recent chain, recent replacement of cockpit awnings and sail bag, and a fresh coat of antifoul (Xmas 2025) along with a fantastic service history (available on request).

'Kiwa' is immaculately maintained, highly spec'd, and ready to take you anywhere in the world, tomorrow. Contact your broker to arrange a viewing.

Disclaimer: Orakei Marine offers the details of this vessel in good faith but cannot guarantee or warrant the accuracy of this information nor warrant the condition of the vessel. A buyer should instruct his agents, or his surveyors, to investigate such details as the buyer desires validated. This vessel is offered subject to prior sale, price change, or withdrawal without notice.