



A true seafarer, adapting seamlessly to all your sailing ambitions!

Boat Details

Boat Type	Sail Yacht
Build	Amel
Model	50
Year	2020
Location	Offshore
Hull Type	Monohull
Hull Material	Fibreglass (GRP)
Fuel Type	Diesel

Mechanical

Engine Type	Inboard
Engine Brand	Volvo Penta D3-110 HP inboard engine and Volvo Penta HS25AE-A hydraulic reverse gear
Drive Type	Sail Drive
No. of engines	1
Horsepower	110 HP
Hours	1560 Hrs
Thrusters	Retractable bow thruster 8hp (24V)

Specifications

LOA	16.5M
LWL	14.5M
Beam	4.79M
Draft	2.15M
Bridge Clearance	23.3M
Displacement	24000kg
Weight	20750kg
Fuel	649L
Water	600L
Holding	160L

Accommodation

Cabins	3
Berths	2 double + 2 bunk beds
Heads	2
Showers	2

On Deck

Tender	dinghy, including a new solar protection
Outboard	Torqeedo electric engine with 2 batteries

Features

New cockpit enclosure
Sun protection
Additional solar panel
Watermaker
Gennaker
Webasto fuel heating throughout the
boat



ORAKEI
MARINE

Jason Snashall
021 929 592
jason@orakeimarine.co.nz

Drew Blair
021 288 7555
drew@orakeimarine.co.nz

✔ Electronics

Garmin GPSMAP 7410 10" MULTIPOINT TOUCH in the cockpit (AtivCaptain application)
GMR18 XHD radar
Furuno gauges
Blue Chart GE Vision HD Large Atlantic Code AF / AW:EU
AIS Garmin Class 8
Iridium GO satellite phone, installed, plugged in
Biometrics for opening TV box
ECHOMAX EM230Midi Passive Radar Reflector + Mast Mount
Barograph
a second autopilot

✔ On Deck (Additional)

Pack of 3 electric winches instead of standard manual winches
Plastimo stainless steel davits (load 160 kg)
Cockpit with hardtop and complete winter cockpit cover
Cockpit cushions
Cockpit table with folding tops
2 stainless steel handrails (1 on each side of the main partition)
Stainless steel rods and clips for boat hook on rear trunk panel
Additional buoy holder with attachment for the buoy + turning lamp
Support for secondary anchor in rear trunk
Spare halyards
Spare bilge pump
Spare fresh water pump
Spare filters and standard engine parts
Lots of lines, including 2 x 100m ones
2 Brompton bikes

✔ Electrical Systems

Volvo Penta HS25AE-A hydraulic inverter
4 lightweight lithium batteries + easyview system with classic 60A charger
Installation of a SunWare portable solar panel "suitcase" + connection to lithium batteries + SMC60 Mastervolt regulator + 2 Philippi sockets in the cockpit
24v/220V 800W converter with power supply from 1 socket in the front cabin, 1 in the TAC, and 1 at the rear cabin
24V cigarette lighter socket in the rear trunk on the port side
a second solar panel

✔ Sails & Rigging

Complete standard equipment, masts, rigging, sails
Self-tacking staysail (24 m²) with Facnor manual furler, halyard, sheets and complete fittings (tracks, cars, blocks, tensioner)
Spinnaker pole and its fittings
Lacquered aluminum rails for sun awning on boom
2nd boom restraint
Folding propeller (Varifold) instead of the standard fixed-blade propeller
Additional pulley at the rear end of the boom
Mainsail track position adjustment system from the cockpit

✔ Interior

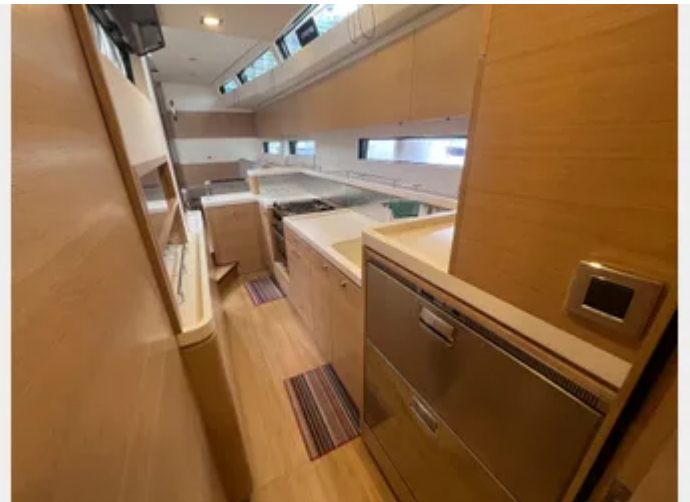
Interior woodwork in light Oak
Interior upholstery and piping in Redondo 03 color
Safe in the aft cabin, to port under the armchair
Pre-installation of washing machine
1-seater anti-roll canvas for the BD and TD benches in the saloon
Bookshelf in the rear cabin with removable fiddles

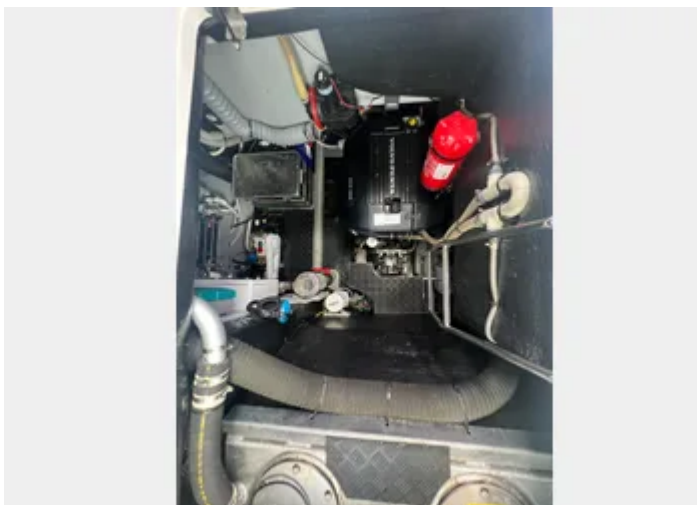
✔ Galley

2 refrigerator drawers
Force10 gas stove 3-burner with oven
Single sink with faucet
Open cupboard instead of a microwave
Longitudinal and transverse stainless steel fiddles in the kitchen (on top of the storage behind the worktop)
Longitudinal stainless steel fiddles in the kitchen (engine compartment side, under the glass storage)

✔ Safety Equipment

Life raft - 8 places - container in balcony support + grab-bag
EPIRB
Jon Buoy Danbuoy





A true seafarer, adapting seamlessly to all your sailing ambitions!

This Amel 50, Gaia, has sailed across oceans, seas, and rivers, journeying through Europe, South America, and Oceania, including the Faroe Islands, Iceland, the White Sea, Brazil, Patagonia, Chile, and now, French Polynesia where her current owners, sadly, will leave her. Gaia has experienced a wide range of landscapes and climates, from the warmest to the coldest and handled it with ease.

Now for sale with the Amel agents for the South Pacific, Orakei Marine, she lays in wait for you to begin your adventures in the crystal clear waters of French Polynesia. Today is the day to start living your dreams by getting in touch with us to make an appointment to view.

This 2020 Amel 50 is exceptionally well equipped for long-distance cruising, outfitted with a comprehensive Garmin navigation suite—including a touchscreen plotter, sounder, radar, and AIS transceiver—it also features an Iridium GO satellite communication system and a portable solar panel setup wired directly into the upgraded lithium battery bank. The electrical system has been further enhanced with an 800W inverter and Master Volt monitoring.

The Amel 50 rig is optimized for ease of handling, with a self-tacking staysail on manual Facnor furler, a manual genoa furler, in-mast furling mainsail, and three upgraded electric winches with ALL furling lines leading back to the cockpit area, meaning this vessel can be controlled by touch from the safety of her central cockpit. With a full set of cockpit enclosures and cushions increasing comfort at anchor and underway, she really is one of the safest vessels for offshore cruising.

Below deck, the interior is finished in light oak with custom upholstery, and includes two fridge drawers in the galley, a diesel air heating system, pre-installation for a washing machine, and a safe in the aft cabin. Numerous thoughtful upgrades throughout—including custom stainless galley fiddles, additional handrails, and a dedicated locker for a generator—make this a particularly well-prepared vessel for serious cruising.

The engine compartment houses a Volvo D3-110 HP inboard diesel engine, coupled with a Volvo Penta HS25AE-A hydraulic gearbox for smooth and responsive power delivery. Propulsion is further enhanced by a folding Varifold propeller, which reduces drag under sail while maintaining excellent thrust in reverse. A retractable 8 HP bow thruster (24V) provides added control during docking and close quarters maneuvering.

The AMEL 50 won the European Yacht of the Year in the Luxury Cruiser category (2018). Designed for simplicity and pleasure, it combines comfort, safety, performance, and innovation, and offers an adaptable sailing experience – whether setting off on a world tour, cruising the Mediterranean, or enjoying a weekend getaway with family, friends, or just the two of you, the AMEL 50 captures the essence of smooth and serene sailing for all types of voyages.

Disclaimer: Orakei Marine offers the details of this vessel in good faith but cannot guarantee or warrant the accuracy of this information nor warrant the condition of the vessel. A buyer should instruct his agents, or his surveyors, to investigate such details as the buyer desires validated. This vessel is offered subject to prior sale, price change, or withdrawal without notice.