

# Aquila 42 Yacht Power Catamaran

\$1,950,000 NZD



## Blue-water confidence meets refined luxury

### Boat Details

Boat Type	Catamaran
Build	Aquila
Model	42 Yacht Power Catamaran
Year	2024
Location	Auckland
Hull Type	Catamaran
Hull Material	Fibreglass (GRP)
Fuel Type	Diesel

### Mechanical

Engine Type	Twin Inboard
Engine Brand	Volvo Penta D4
Drive Type	Shaft Drive
No. of engines	2
Horsepower	600 HP
Thrusters	Bow Thruster 8.5hp
Cruising speed	16 Knots
Max. speed	22 Knots
Generator	Kohler

### Specifications

LOA	12.64M
Beam	6.4M
Draft	1.1M
Bridge Clearance	5.6M
Displacement	19000kg
Weight	15700kg
Fuel	1000L
Water	460L
Holding	160L

### Accommodation

Cabins	3
Berths	6
Heads	3 ensuite
Showers	3

### On Deck

Tender	Dinghy
Anchor	20kgs Delta
Chain / Warp	150ft 5/16" chain with shackles and bridle system

### Features

Solar panels
Electric davit
Underwater lights
2 x bait station w/ rod holders
Flybridge wet bar



**ORAKEI**  
MARINE

**Jason Snashall**  
021 929 592  
jason@orakeimarine.co.nz

**Drew Blair**  
021 288 7555  
drew@orakeimarine.co.nz

## ✔ Electronics

Raymarine 12" Axiom Pro Chartplotter (cockpit & flybridge)  
Raymarine Autopilot (cockpit & flybridge)  
Raymarine VHF (cockpit & flybridge)  
Raymarine docking camera  
Fusion Apollo stereo w/ speakers  
Drop-down smart TV in cockpit

---

## ✔ Electrical Systems

Inverter/charger 12/230v 3000 VA  
Dedicated 105 Amp/hr engine start batteries  
2 x AGM house batteries 200 Amp/hr  
Solar panels w/ 2 x additional AGM batteries  
50 Amp 125/250v shore power cable  
Galvanic isolator protector system

---

## ✔ Galley

2-ring induction cooktop  
Microwave/convection oven  
Full size Isotherm fridge and freezer  
Stainless sink w/ single faucet

---

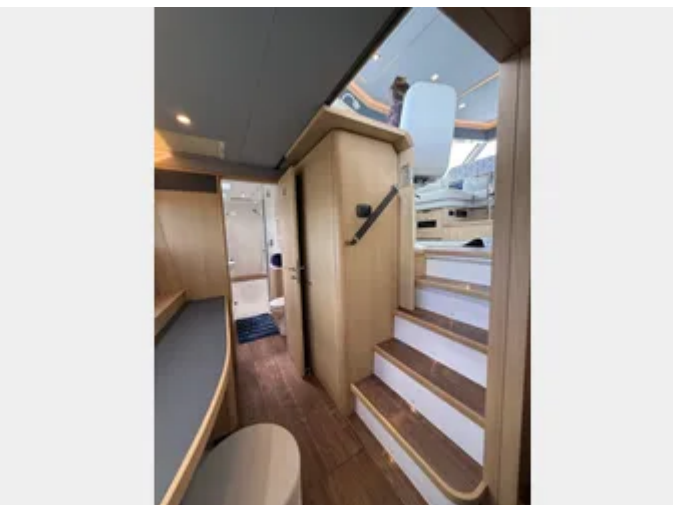
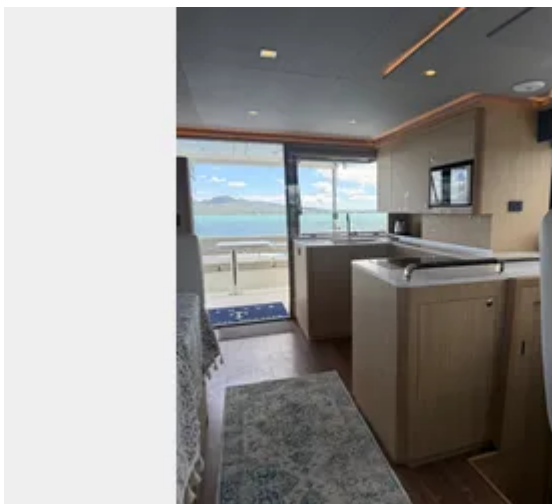
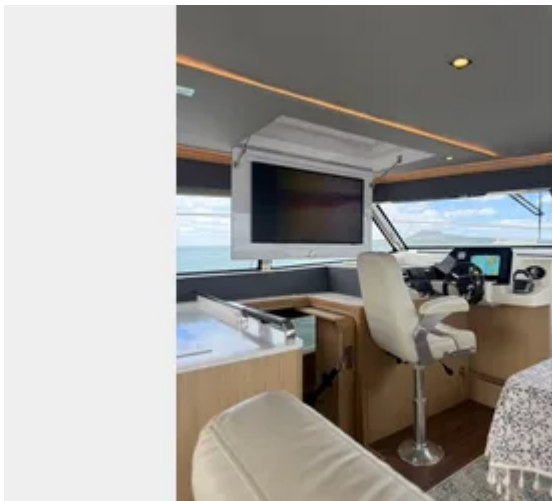
## ✔ On Deck (Additional)

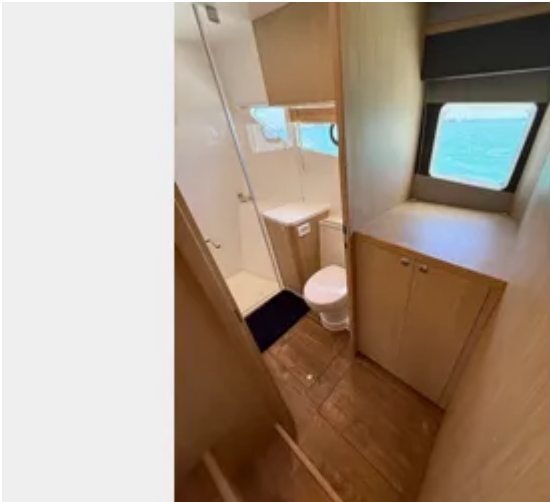
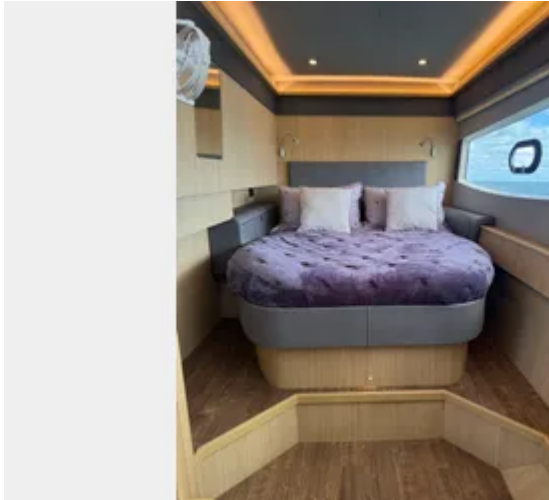
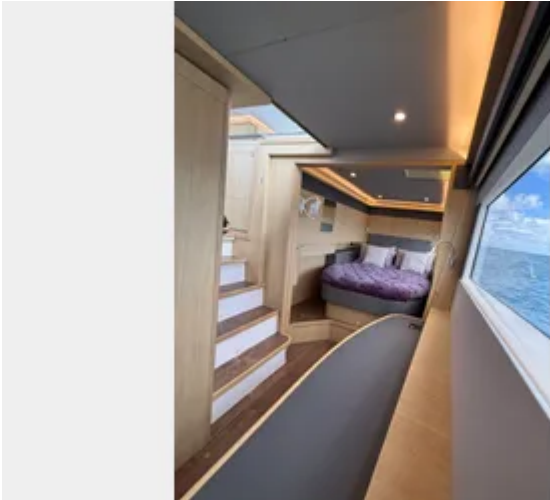
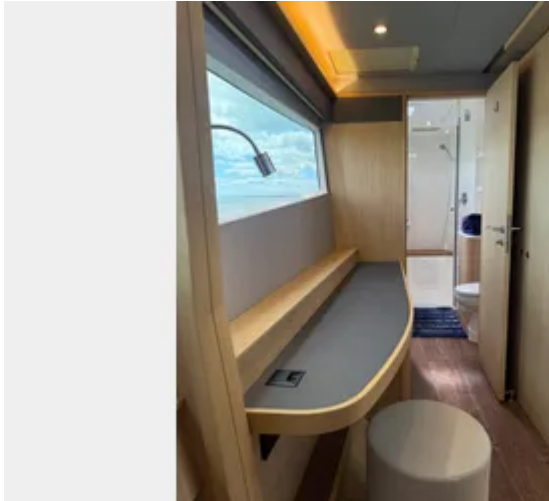
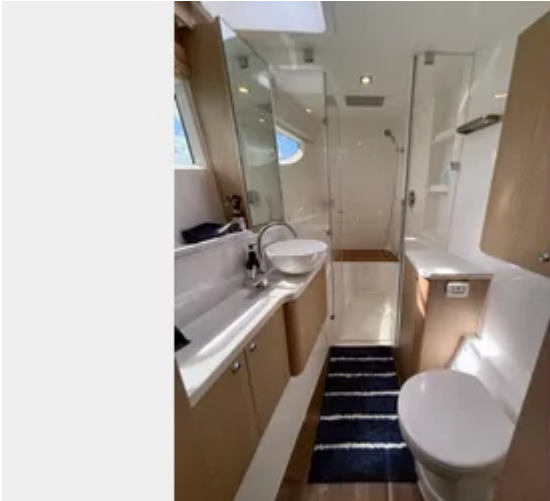
Transom shower (hot & cold)  
Freshwater deck wash on bow  
Bow roller for secondary anchor  
Concealed swim ladder

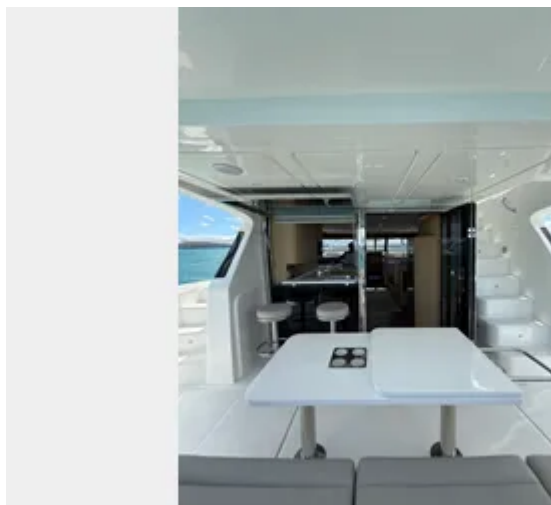
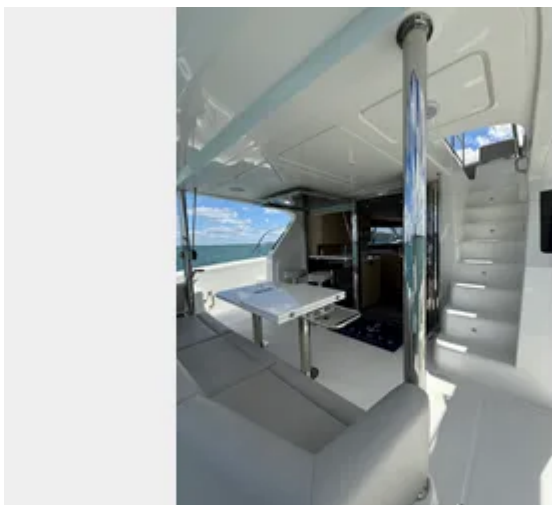
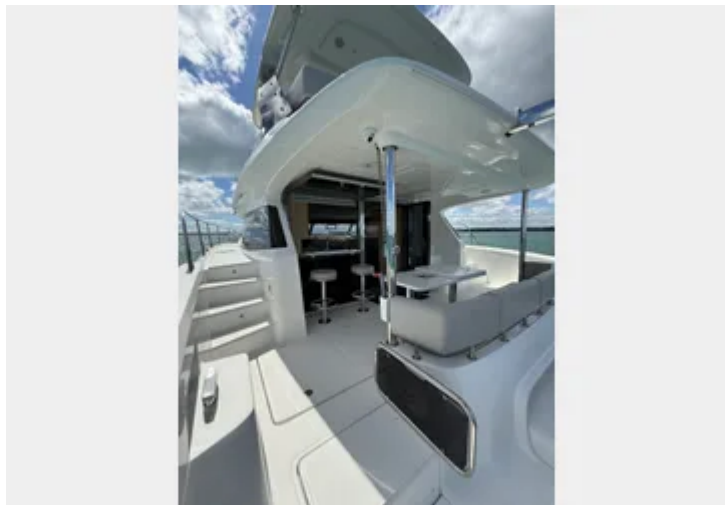
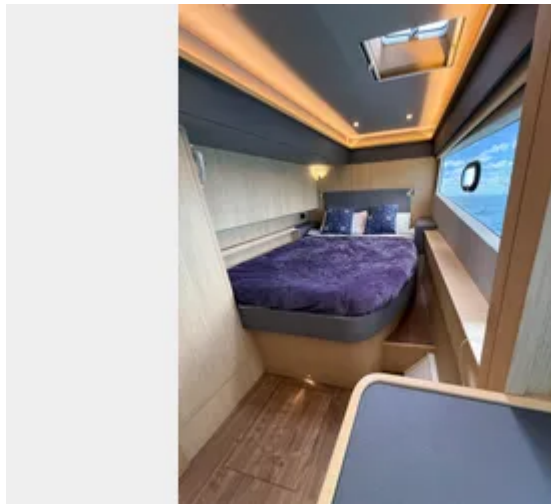
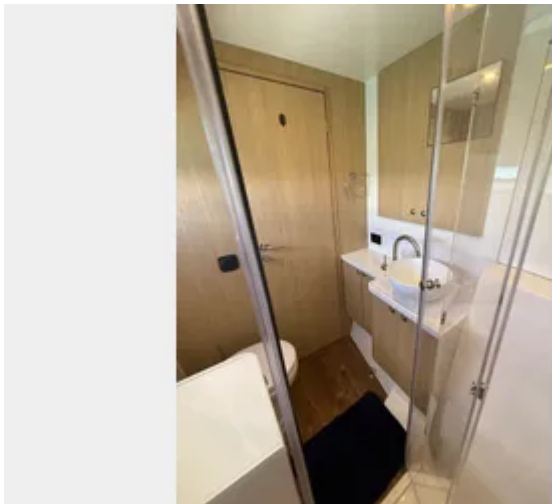
## ✔ Flybridge

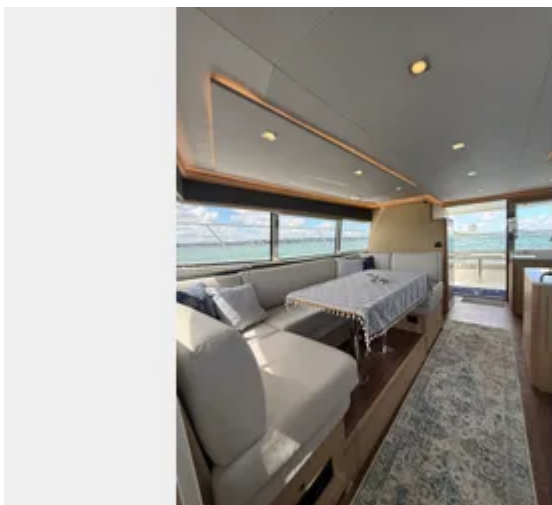
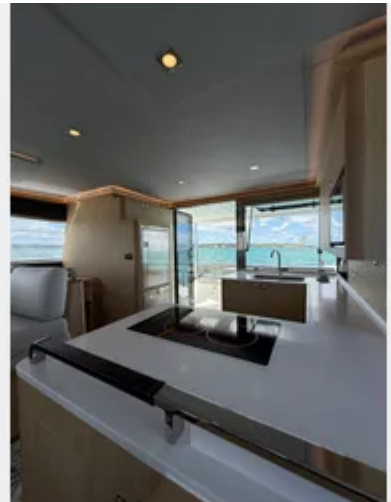
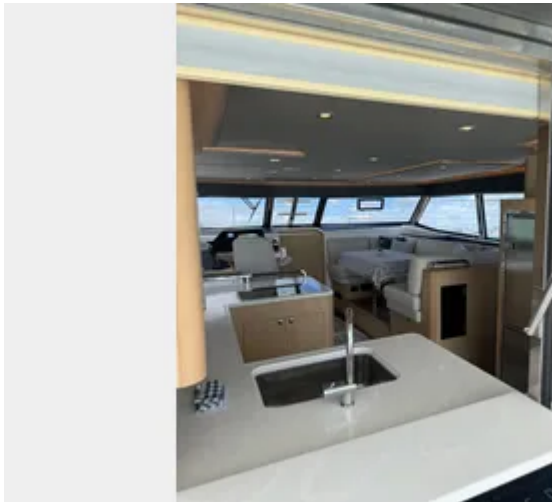
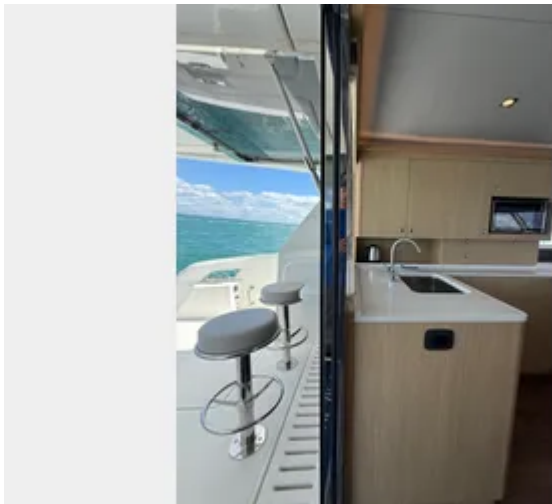
Hard top  
Wet bar

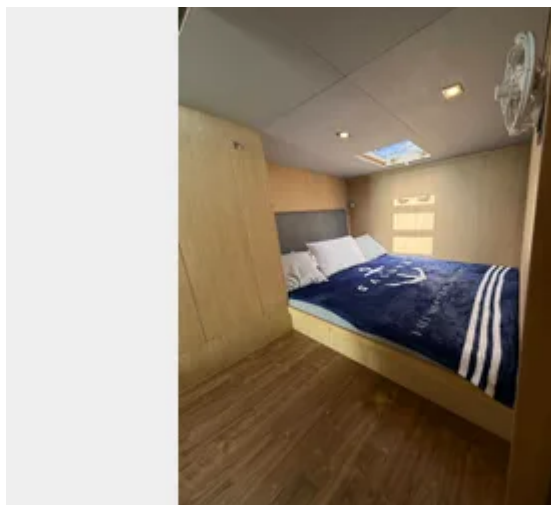
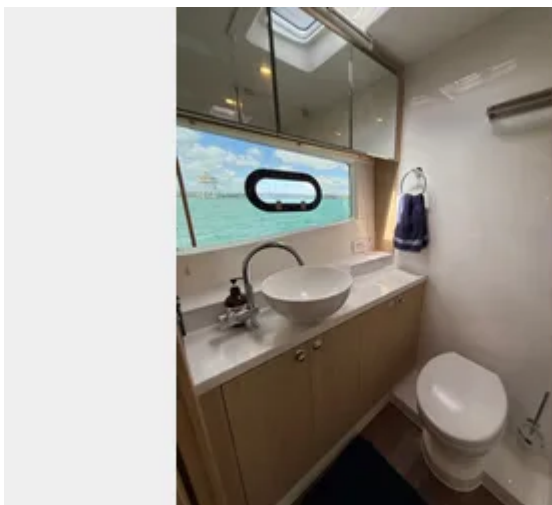
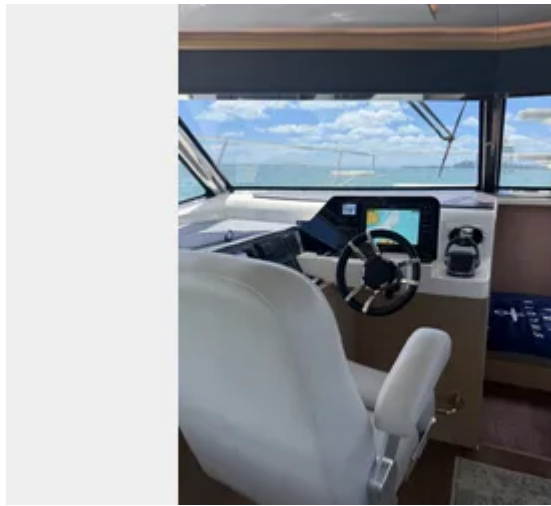


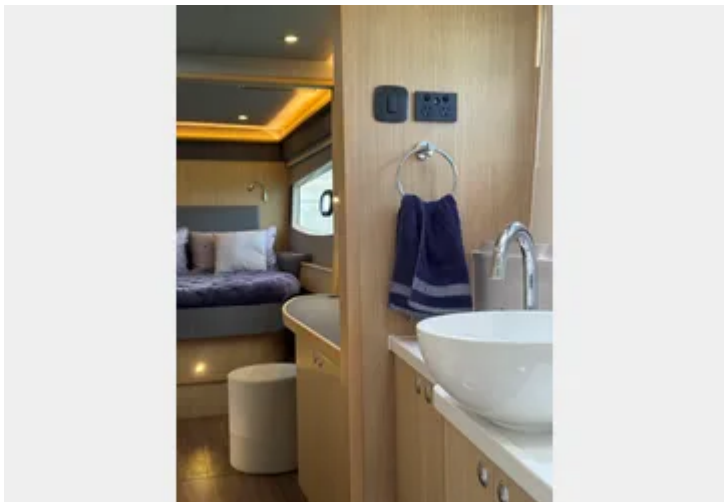
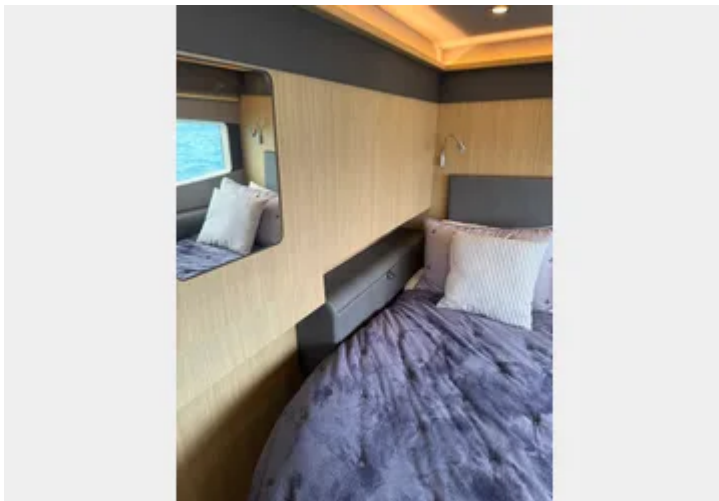
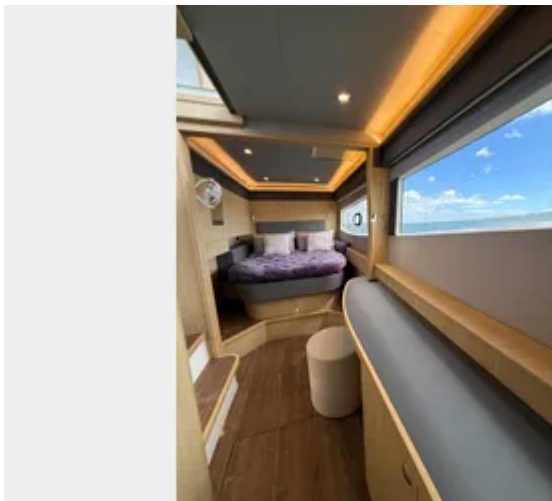












# Blue-water confidence meets refined luxury

This exceptional 2024 Aquila 42 Yacht Power Catamaran, designed by world-renowned naval architects VPLP Design, delivers true blue-water capability.

Powered by twin Volvo Penta D4 300hp diesel shaft-drive engines, *Salute* provides smooth, reliable performance and excellent handling in a wide range of conditions. The yacht features a generous 3-cabin, 3-ensuite accommodation layout, complemented by multiple outdoor living areas ideal for entertaining or relaxing with family and friends.

The enormous flybridge offers ample seating and a wet bar, while the large aft cockpit flows seamlessly from the main saloon, creating a superb indoor-outdoor living space. Forward, a dedicated sun-lounging area on the bow is easily accessed via wide side decks or directly from the flybridge. For all-weather cruising, the vessel is fitted with a fully equipped interior helm station, ensuring safe, sheltered operation with clear sightlines and precise control at all times.

Engineered using advanced Computational Fluid Dynamics (CFD), the Aquila 42's hull design maximises performance and fuel efficiency while minimising drag, delivering confident and economical cruising.

Key features include a Kohler generator, solar panels with batteries, 8.5hp bow thruster, electric davit, full-size galley, underwater lights, Raymarine navigation electronics and more.

A near-new example of this highly regarded power catamaran, *Salute* presents an outstanding opportunity for buyers seeking a capable, comfortable cruising yacht ideally suited to Australian and NZ waters.

---

**Disclaimer:** Orakei Marine offers the details of this vessel in good faith but cannot guarantee or warrant the accuracy of this information nor warrant the condition of the vessel. A buyer should instruct his agents, or his surveyors, to investigate such details as the buyer desires validated. This vessel is offered subject to prior sale, price change, or withdrawal without notice.