

# Classic Trawler 45

\$1,495,000 NZD



Perfect for long range coastal cruising!

## Boat Details

|               |                  |
|---------------|------------------|
| Boat Type     | Trawler          |
| Build         | Classic Trawler  |
| Model         | 45               |
| Year          | 2022             |
| Location      | Auckland         |
| Hull Type     | Monohull         |
| Hull Material | Fibreglass (GRP) |
| Fuel Type     | Diesel           |

## Mechanical

|                |                 |
|----------------|-----------------|
| Engine Type    | Inboard         |
| Engine Brand   | Cummins QSB 6.7 |
| Drive Type     | Shaft Drive     |
| No. of engines | 1               |
| Horsepower     | 355 HP          |
| Hours          | 460 Hrs         |

## Specifications

|         |       |
|---------|-------|
| LOA     | 14M   |
| Beam    | 4.17M |
| Draft   | 1.37M |
| Fuel    | 1500L |
| Water   | 1100L |
| Holding | 260L  |

## Accommodation

|        |  |
|--------|--|
| Cabins | 2  |
| Berths | Sleeps 10  |
| Heads  | 2 x Tecma Silence<br>Plus 2G electric<br>macerator toilets |

## On Deck

|              |  |
|--------------|--|
| Anchor       | Maxwell stainless<br>steel polished 30kg<br>anchor |
| Chain / Warp | 80m x 10mm chain<br>and 70mm x 16mm<br>nylon braid |

## Features

- \* Vetus 9512D bow and stern thrusters
- \* Onan (Cummins) 7.0kVA model 7.0MDKD7
- \* Cruisair reverse cycle 16,000BTU air conditioning and heating system
- \* Twin solar installations 400W and 320W



- Celebrating 20 Years -  
**ORAKEI**  
MARINE

**Jason Snashall**  
021 929 592  
jason@orakeimarine.co.nz

**Scott Oldfield**  
021 799 794  
scott@orakeimarine.co.nz

## ✔ Electronics

- \* Garmin systems throughout with 2x12" screens in pilothouse, and single screen on flybridge
- \* Multipurpose displays at both helms
- \* Hydraulic autopilot system
- \* Compasses at both helm stations
- \* Fusion stereo system and amplifier with 4 zones – salon, pilothouse, flybridge, cockpit
- \* Drop down TV cabinet in salon with Kingsat satellite dish on flybridge roof

## ✔ On Deck (Additional)

- \* Windlass Maxwell RC10 with stainless steel foot switches on deck, chain counter at main helm
- \* Spare 25kg anchor, chain, and rode in anchor locker
- \* 2 1/4-in stainless steel shaft and 4-blade nibral propeller
- \* Engine/gen flush system - SALT-AWAY engine flushing system controlled from pilothouse to enable engine and generator flushing when not being used for extended periods
- \* Fuel filters - dual Raycor 900 filters for main engines and single Raycor for generator
- \* Oil change system - Reverso GP-3013 oil change system piped to main engine sump, main engine transmission, and generator to make oil changes a breeze
- \* Bow and stern thrusters - Vetus 9512D thrusters, controls, fuses, shutoff switches, with control from both stations
- \* Deck washdown is possible with either fresh water or sea water (manual changeover), and is connected to outlets at the bow, and on the swim platform; quality Whale pump
- \* Deck shower fitting in cockpit with hot and cold water
- \* Blue courtesy/accent lighting on outside deck areas
- \* Single Marinco spotlight on pilothouse roof with remote at main station
- \* Sunbrella fabric on all exterior cushions
- \* Heavy duty T316 stainless steel staunchions, higher than standard, for true safety at sea
- \* Two folding staples on swim platform
- \* Twin chairs on flybridge helm

## ✔ Electrical Systems

- \* Inverter/charger - Mastervolt Combimaster 12/3000-100, rated for 3000W inverting, and 100A charging with power pass through capability when on generator or shore power; Easyview 5 remote monitoring panel at pilothouse
- \* Twin solar installations 400W and 320W on flybridge and pilothouse roofs connected to two EPeve MPPT controllers in lazarette, charging house batteries when away from marina
- \* 3 x 225AH house batteries in lazarette (new May 2025)
- \* 1 x Engine start battery in engine room
- \* 1 x Generator start battery in lazarette
- \* 1 x Bow thruster/windlass battery 200AH AGM under front bed
- \* 1 x Stern thruster battery in lazarette 200AH AGM
- \* Battery control - all batteries are controlled from the pilothouse using Blue Seas ACR auto-voltage sensing relays to allow batteries to be turned off remotely or paralleled safely
- \* BEP (NZ) panels and breakers for all AC and DC loads in pilothouse
- \* Shore power connection at BOTH bow and stern for easy connection in different marinas
- \* Connection size is 30A (Marinco) however existing cord is fitted with 16A connector for more standard marina size
- \* 30A galvanic isolators installed bow and stern

## ✔ Interior

- \* 1 queen berth in the master cabin, 3 single berths in the guest cabin, 1 double berth in the drop-down dinette, 1 double pull-out sofa berth in the salon, and 1 single berth in the pilothouse = sleeps 10
- \* Heat and Air - Cruisair 16,000BTU unit with two air handlers in salon only
- \* 5kw Webasto style diesel heater in lazarette ducted to salon and front hallway
- \* Hot water - 80L electric/engine heat hot water tank
- \* Domestic water system - Sureflow waterpump complete with accumulator for smoother pump operation; quality Uponor piping throughout
- \* Domestic Fixtures - Toto taps and basin
- \* 260L black water fibreglass tank with Sealand Watch tank monitor, has deck pump-out fitting for when living at a marina, and Whale gulper pump for overboard discharge when possible
- \* Fuel and water tanks have KUS gauges at helm station
- \* Flush system - toilets use fresh water flushing but also have manual changeover to allow sea water flushing for longer trips to preserve fresh water (eliminates toilet odour)
- \* Hella LED lighting throughout with low level accent strip-lighting under all cabinets throughout boat, and high level accent LED strip-lighting in salon
- \* Red/white selectable pilothouse lighting for better night vision

- \* Large LED lighting in engine room and lazarette
  - \* Total of 9 reading lights installed throughout the boat
  - \* Hella 12V fans installed in each stateroom
  - \* Additional ventilation fans installed in engine room, shower, toilets, and galley
  - \* Single pilot chair in pilothouse
  - \* Interior doors are solid teak frames with diamond pattern teak panel inlay, and lower louvres (teak)
  - \* Quality fully adjustable German stainless steel hinges for all cabin doors
  - \* Door frames are steam bent form solid teak
  - \* Oceanair blind/screen on forward cabin hatch
  - \* Ultraleather upholstery in salon
  - \* Storage drawers/cabinets everywhere, with cedar lining in stateroom cabinets, and illuminated in staterooms and laundry closet
- 

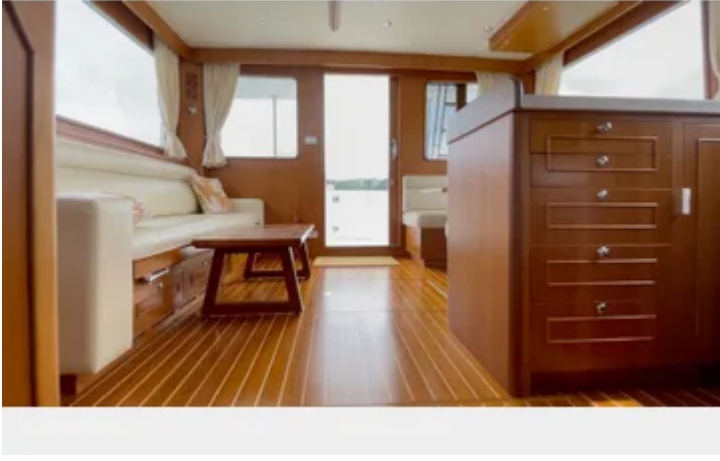
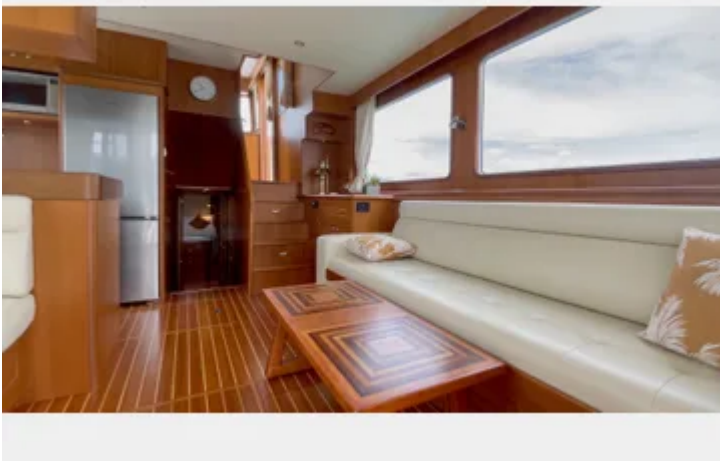
### ✔ Galley

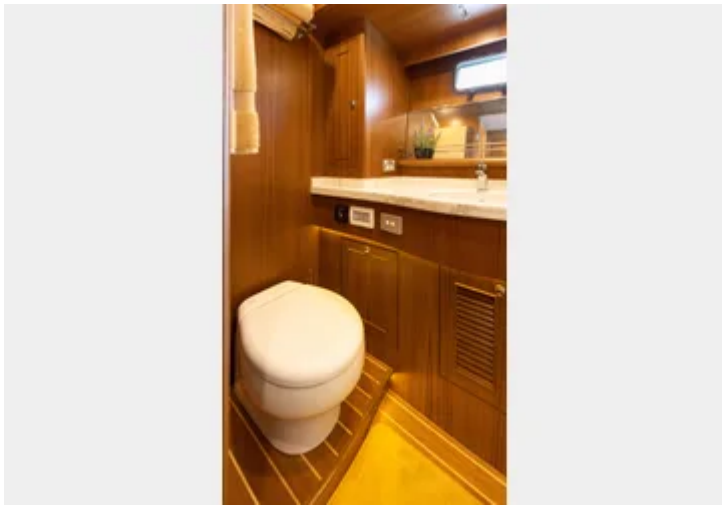
- \* Force 10 3-burner propane cooker with oven connected to standard LPG bottle in locker on flybridge, and BEP gas monitor/safety solenoid control from galley
- \* Full sized Samsung stainless steel fridge freezer on 240 volt
- \* Trim pieces in galley and tops of cabinets made of steam bent teak
- \* Quartz counter tops throughout

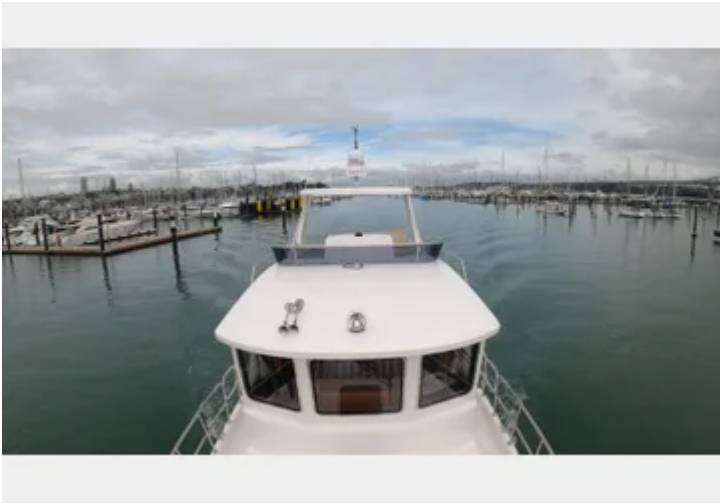
### ✔ Comments

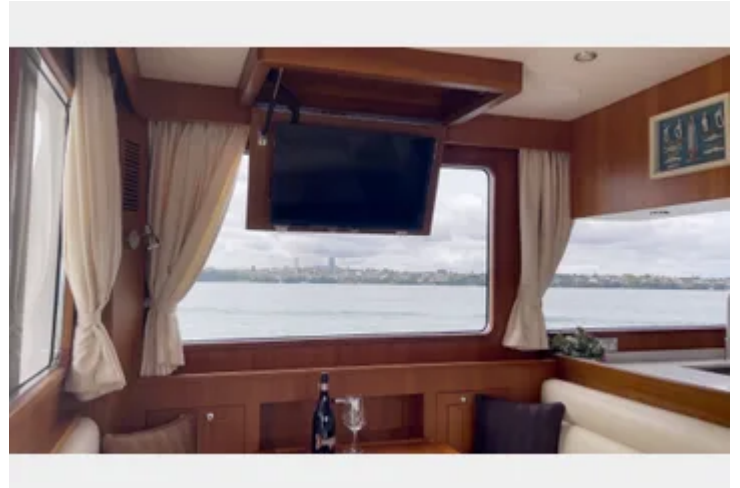
- \* Provision to add future water maker easily by running wiring from a breaker in the main electrical panel to the lazarette
  - \* Provision for future underwater lighting with wiring run from switch in main panel to lazarette to make future installation easy
  - \* Provision for future deck crane, including reinforced deck on flybridge; staunchions designed to accept deck swing; main fuse provided at lazarette panel for crane
-



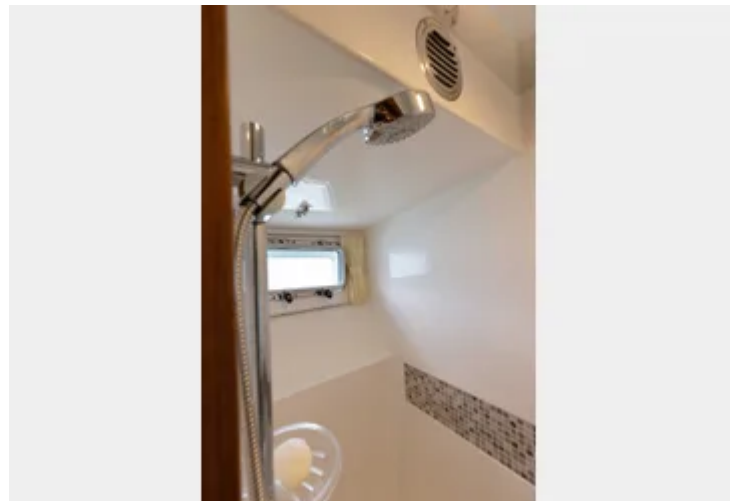
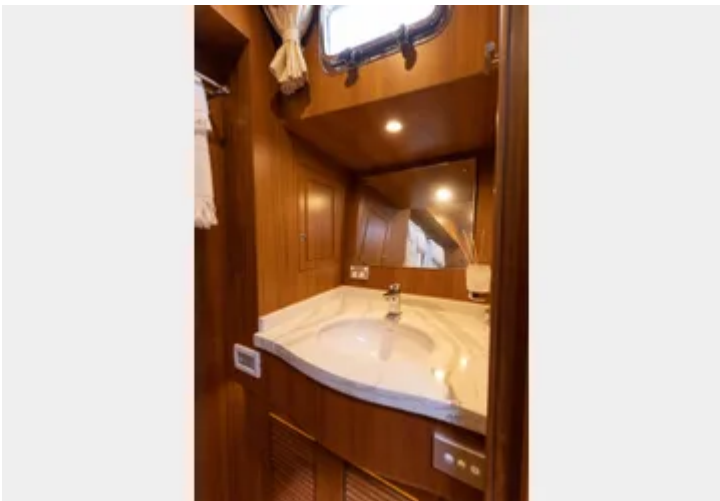
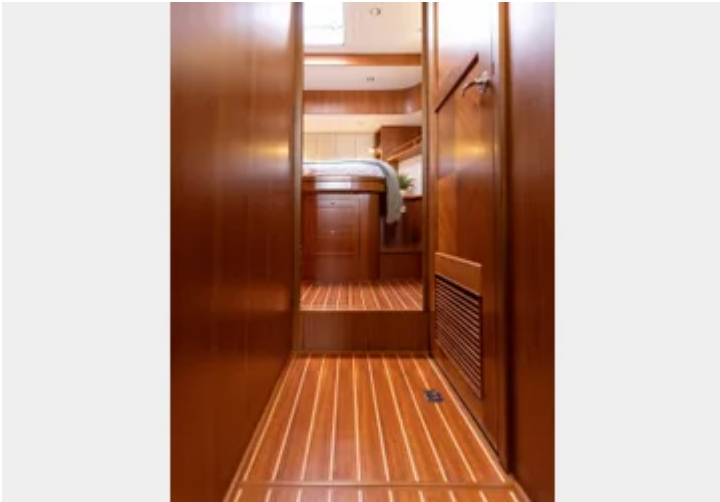


















## Perfect for long range coastal cruising!

Comfortable, stylish, and built on a proven seaworthy design, this vessel is perfectly suited for exploring New Zealand's coastline in depth and making the most of every journey. Whether you're planning extended cruising or dreaming of months spent discovering new destinations by water, she offers a reliable and inviting platform to create lasting memories.

Powered by 1 x Cummins QSB 6.7 355hp shaft drive engines and supported by an Onan (Cummins) 7.0kVA generator and 675AH house battery system, she is well-equipped for both performance and independence. Maneuvering is made easy with Vetus 9512D bow and stern thrusters, while onboard comfort is enhanced by a Cruisair 16,000BTU air conditioning and heating system. Twin solar arrays (400W and 320W) mounted on the flybridge and pilothouse roofs feed into dual EPEver MPPT controllers, efficiently charging the house batteries when away from the marina.

Constructed with a solid fibreglass hull (no coring), the vessel features vinyl ester resin in the outer two layers for added durability, along with Interprotect coating below the waterline and antifouled with Altex No.5 for long-lasting protection. Inside, the vessel features a spacious two-stateroom pilothouse layout, with a generous salon and full-service galley area that rivals those found on many 50-foot vessels.

---

**Disclaimer:** Orakei Marine offers the details of this vessel in good faith but cannot guarantee or warrant the accuracy of this information nor warrant the condition of the vessel. A buyer should instruct his agents, or his surveyors, to investigate such details as the buyer desires validated. This vessel is offered subject to prior sale, price change, or withdrawal without notice.