

Don Senior 12m Flybridge

\$289,000 NZD



Single Volvo engine re-built in 2019/2020!

Seniorita is on the market! The current owner has owned her for 9 years and now its time to move her onto new owners!

Boat Details

Boat Type	Launch
Build	Don Senior
Model	12m Flybridge
Year	1996
Location	Auckland
Hull Type	Monohull
Hull Material	Fibreglass (GRP)
Fuel Type	Diesel

Mechanical

Engine Type	Inboard
Engine Brand	Volvo TAMD 63
Drive Type	Shaft Drive
No. of engines	1
Horsepower	370 HP
Hours	690 Hrs
Thrusters	Bow Thruster
Cruising speed	15-16 Knots
Generator	Mastervolt Whisper 3.5

Specifications

LOA	12.45M
Beam	4.1M
Draft	1M
Fuel	1000L
Water	1000L

Accommodation

Cabins	2
Berths	4 +2 in flybridge
Heads	1
Showers	1 + Cockpit shower

On Deck

Tender	2.4m Aquapro
Outboard	5hp Mercury
Anchor	Plow Anchor
Chain / Warp	60m 8mm chain & 40m warp

Features

Volvo engine re-built 2019/2020
40" TV in Saloon
Ample Fridge & Freezer space



-Celebrating 20 Years-
ORAKEI
MARINE

Scott Oldfield
021799794
scott@orakeimarine.co.nz

Drew Blair
0212887555
drew@orakeimarine.co.nz

✔ **Electronics**

Garmin GPS/ Fishfinder/ Plotter
Raymarine Autopilot
Uniden VHF
Electrotab Trim Tabs
Auto anchor chain counter

✔ **Electrical Systems**

BEP Voltmeter
4x DC224-6 House batteries
2x Start batteries 24v
1600W Inverter
Solar Panels
Balmar battery charger

✔ **Interior**

Barometer & Clock
40" TV

✔ **On Deck (Additional)**

Spotlight
2x Baitboards
Quick Anchor winch

✔ **Flybridge**

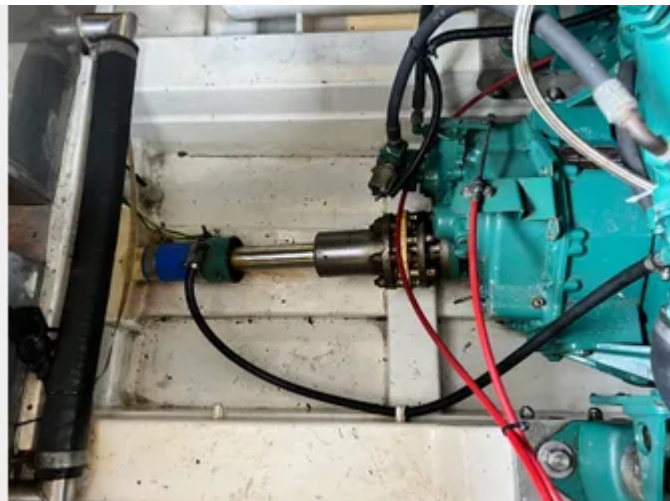
Fridge/ Freezer

✔ **Galley**

Large galley fridge
Large cockpit freezer
Smev 3 burner LPG Hob & Oven
LPG Detector







Single Volvo engine re-built in 2019/2020!

Seniorita is on the market! The current owner has owned her for 9 years and now its time to move her onto new owners!

Introducing Seniorita!

A quality New Zealand built Don Senior 12m Flybridge was built to a high standard in 1996 and was constructed using epoxy, fiber glass and plywood.

The Don Senior 12m Flybridge is known for its smooth riding hull and generous interior with an enclosed flybridge.

The current owner has owned her for 9 years and had the Volvo 370hp engine re-built in 2019/2020. She is also equipped with a bow thruster to make berthing a breeze.

In the interior there are 2 cabins that can sleep 4 people and an additional 2 people can sleep in the flybridge.

The galley is equipped with an LPG oven/ hob and large fridge in the galley with a large freezer in the cockpit. There is also an additional fridge/ freezer in the flybridge.

There is ample storage throughout the boat and having the single engine gives extra storage room in the engine room.

Driving this boat from the flybridge is a pleasure as there is great visibility and having the single engine makes her a very economical package.

The Don Senior 12m Flybridget is a great platform for whatever you require wither it be fishing, cruising the gulf or getting away for extended periods on the water.

For more information or to arrange a viewing please contact one of brokers.

Disclaimer: Orakei Marine offers the details of this vessel in good faith but cannot guarantee or warrant the accuracy of this information nor warrant the condition of the vessel. A buyer should instruct his agents, or his surveyors, to investigate such details as the buyer desires validated. This vessel is offered subject to prior sale, price change, or withdrawal without notice.