

Don Webb 56 Fly

\$449,000 NZD



A classic Kiwi built Motor Yacht with an Orakei Marina berth available to purchase!

Launched in Dec 1989, undergoing comprehensive refurbishments and upgrades from 2016 to 2023, Ricochet is a vessel that commands attention!

Boat Details

Boat Type	Motor Yacht
Build	Don Webb
Model	56ft
Year	1989
Location	Auckland
Hull Type	Monohull
Fuel Type	Diesel
Hull Material	Fibreglass over 3-plank Kahikatea wood

Mechanical

Engine Type	Twin Inboard
Engine Brand	Caterpillar 3208T
Drive Type	Shaft Drive
No. of engines	2
Horsepower	375 HP
Hours	5240 Hrs
Thrusters	Side Power (bow)
Cruising speed	14.5 Knots
Max. speed	21 Knots

Specifications

LOA	17M
Beam	4.1M
Draft	1.0M
Displacement	15422kg
Fuel	1800L
Water	400L

Accommodation

Cabins	3
Berths	1 double + 3 single
Heads	1
Showers	1 internal + 1 aft external

On Deck

Tender	3.5m Southern Pacific Divesport RIB cc
Outboard	30hp 2-Stroke Evinrude
Anchor	Sarca Excel
Windlass	Muir vertical
Chain Counter	Maxwell AA560

Features

New Zipwake trim tabs (Sep 2020)
320kg capacity 24v OceanLift crane
Paguro 8.5kVa genset
Game chair, rocket launchers, and outriggers
4 x 200W solar panels
BBQ (new Dec 2018)



ORAKEI
MARINE

Jason Snashall

021 929 592

jason@orakeimarine.co.nz

Scott Oldfield

021 799 794

scott@orakeimarine.co.nz

✔ Electronics

2 x Raymarine E127 Hybrid Touch multifunction screens
Raymarine radar HD colour
Raymarine plotter/GPS
Raymarine fishfinder
Raymarine autopilot
Raymarine VHF x 2
Trac Vision TV3 Sat TV
Aft facing camera
AIS, Windspeed/direction
3 zone Axium w/ 4 controls speaker system (upgraded May 2020)
Maxwell AutoAnchor AA560 rode counter & windlass controller

✔ Electrical Systems

Mastervolt 3000-6000W inverter
24v House batteries w/ 800AH & AEP charger (new Mar 2023)
230 AC voltage
12v electronics 300AH (new Feb 2024)
24v engine batteries

✔ Interior

Carpet flooring throughout
L-shaped saloon lounge (port) w/ table
3-seater saloon lounge (stbd)
Stbd helm
6-spoke destroyer type SS steering wheel
V-berth double w/ underbed storage in Master cabin
Twin single bunks in port cabin
Single berth in stbd cabin
Day head w/ shower

✔ Safety Equipment

EPIRB
15 Life jackets
4 x fenders

✔ On Deck (Additional)

Enclosed cockpit w/ clears
Teak flooring on cockpit and aft deck
L-shaped cockpit lounge
Cockpit table
Spotlight
SS safety rails on aft deck
Fishing gear lockers (new Dec 2018)
Bait board with fish box below

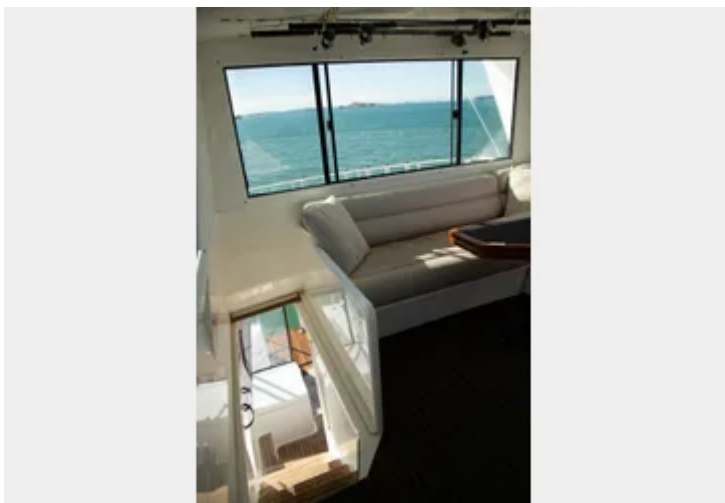
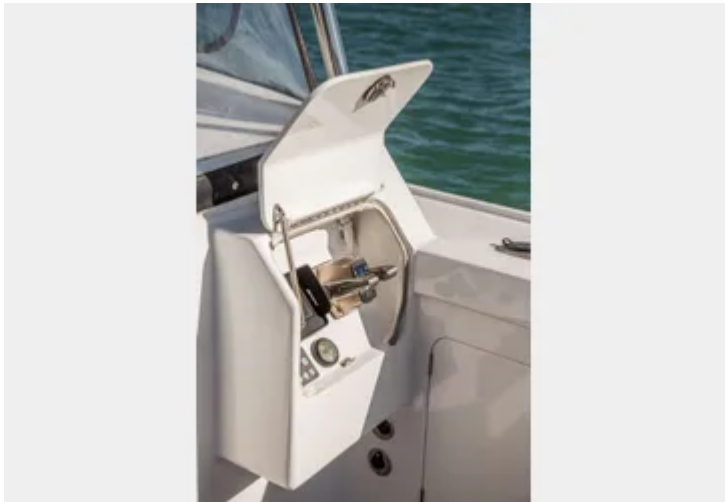
✔ Flybridge

Flybridge hardtop
Windshield w/ wipers
Expansive centre helm
6-spoke destroyer type SS steering wheel
2 helm seats
Carpet flooring (new 2016)
LED lights
L-shaped lounge w/ table
Isotherm fridge 12v
Fishing rod storage rack mounted on flybridge hardtop

✔ Galley

2 x SS sinks w/ pull out faucet
Whirlpool 4-burner stove LPG
Parmco electric oven
Whirlpool microwave oven
3 fridges and 1 freezer
Aqua AC260 watermaker 260L/hr 230v (new Nov 2021)
100L hot water dual system





A classic Kiwi built Motor Yacht with an Orakei Marina berth available to purchase!

Launched in Dec 1989, undergoing comprehensive refurbishments and upgrades from 2016 to 2023, Ricochet is a vessel that commands attention!

Retaining her striking Don Webb design and sturdy build, she has been meticulously renovated with modern components and systems throughout.

This resilient and robust boat leaves no detail overlooked, with over \$220K spent in 2016 on new fibreglass over ply decks, resealing of flybridge windows, touch-up painting in the flybridge, LED lights installed throughout, new carpet, rewire of all high current DC circuits, new tender and outboard, new 800AH house batteries, new port fuel tanks, new anchor and chain, rebuild top end of both engines, and complete engine service (turbos, valves and guides, heads, injectors, intercoolers etc.),

As the proud new owner, you'll find yourself with a vessel that meets all expectations, showcasing the meticulous efforts invested in her restoration boasting over \$150K in additional recent works since 2018.

- New BBQ, new fishing gear lockers, resprayed all rear cockpit, and replaced outdoor squabs in Dec 2018
- Entertainment system upgraded in May 2020
- Installed new Zipwake trim tabs, resprayed flybridge, and installed SS rail around duckboard in Sept 2020
- New Aqua water maker installed in Nov 2021
- New Paguro 8.5kVa Genset installed in Dec 2022
- New 800AH house batteries and AEP charger installed in Mar 2023
- Radar arch rebuild, new AIS, new VHF aerials, new GPS aerial, Capstan overhaul, deck repairs and resealing of all fittings in Sept 2023

Ricochet is powered by twin 375hp Caterpillar 3208 turbo diesel shaft drive engines. The spacious engine bay offers room for future additions or convenient storage as needed. Cruising comfortably at 14-15 knots, Ricochet ensures smooth voyages to your destinations, promising leisure and enjoyment on the water.

18M Orakei Marina berth available to purchase

Disclaimer: Orakei Marine offers the details of this vessel in good faith but cannot guarantee or warrant the accuracy of this information nor warrant the condition of the vessel. A buyer should instruct his agents, or his surveyors, to investigate such details as the buyer desires validated. This vessel is offered subject to prior sale, price change, or withdrawal without notice.