

# Don Webb 56 Fly – Ricochet

\$425,000 NZD



## A classic Kiwi-built motor yacht with an Orakei Marina berth available for purchase!

Launched in Dec 1989 and extensively serviced and upgraded through the years since 2016, including a recent engine service (Nov 5, 2025) -- Ricochet truly commands attention!

### Boat Details

Boat Type	Motor Yacht
Build	Don Webb
Model	56ft
Year	1989
Location	Auckland
Hull Type	Monohull
Fuel Type	Diesel
Hull Material	Fibreglass over 3-plank Kahikatea wood

### Mechanical

Engine Type	Twin Inboard
Engine Brand	Caterpillar 3208T
Drive Type	Shaft Drive
No. of engines	2
Horsepower	375 HP
Hours	5240 Hrs
Thrusters	SidePower 24v dual control station (Flybridge and aft cockpit)
Cruising speed	14.5knots @2000rpm Knots
Max. speed	22 Knots
Generator	Paguro 8.5kVa genset (installed Nov 2022)

### Specifications

LOA	17M
Beam	4.1M
Draft	1.0M
Displacement	15422kg
Fuel	1800L
Water	400L

### Accommodation

Cabins	3
Berths	1 double + 3 single

### On Deck

Tender	3.5m Southern Pacific Divesport RIB cc
--------	--

### Features

New Zipwake trim tabs (Sep 2020)
320kg capacity 24v OceanLift crane



**ORAKEI**  
MARINE

**Jason Snashall**

021 929 592

jason@orakeimarine.co.nz

**Scott Oldfield**

021 799 794

scott@orakeimarine.co.nz

## ✔ Electronics

2 x Raymarine E127 Hybrid Touch multifunction screens  
Raymarine radar HD colour  
Raymarine plotter/GPS  
Raymarine fishfinder  
Raymarine autopilot  
Raymarine VHF x 2  
Trac Vision TV3 Sat TV  
Aft facing camera  
AIS, Windspeed/direction  
3 zone Axiom w/ 4 controls speaker system (upgraded May 2020)  
Maxwell AutoAnchor AA560 rode counter & windlass controller

---

## ✔ Electrical Systems

Mastervolt 3000-6000W inverter  
24v House batteries w/ 800AH & AEP charger (new Mar 2023)  
230 AC voltage  
12v electronics 300AH (new Feb 2024)  
24v engine batteries  
Charging - alternators on main engines + 2 x 24V chargers and 1 x 12V charger

## ✔ Interior

Carpet flooring throughout  
L-shaped saloon lounge (port) w/ table  
3-seater saloon lounge (stbd)  
Stbd helm  
6-spoke destroyer type SS steering wheel  
V-berth double w/ underbed storage in Master cabin  
Twin single bunks in port cabin  
Single berth in stbd cabin  
Day head w/ shower

---

## ✔ Safety Equipment

EPIRB  
15 Life jackets  
4 x fenders

---

## ✔ On Deck (Additional)

Enclosed cockpit w/ clears  
Teak flooring on cockpit and aft deck  
L-shaped cockpit lounge  
Cockpit table  
Spotlight  
SS safety rails on aft deck  
Fishing gear lockers (new Dec 2018)  
Bait board with fish box below  
Fuel - 4 x SS tanks holding 1600 litres  
Water - 2 x SS tanks holding 500 litres

## ✔ Flybridge

Flybridge hardtop  
Windshield w/ wipers  
Expansive centre helm  
6-spoke destroyer type SS steering wheel  
2 helm seats  
Carpet flooring (new 2016)  
LED lights  
L-shaped lounge w/ table  
Isotherm fridge 12v  
Fishing rod storage rack mounted on flybridge hardtop

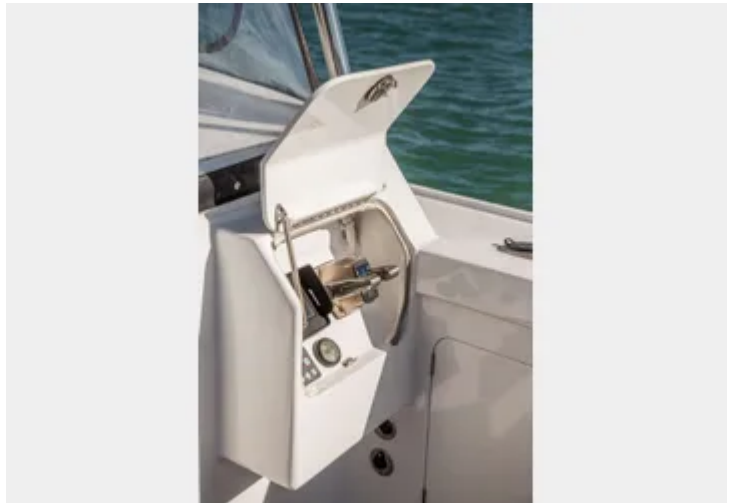
---

## ✔ Galley

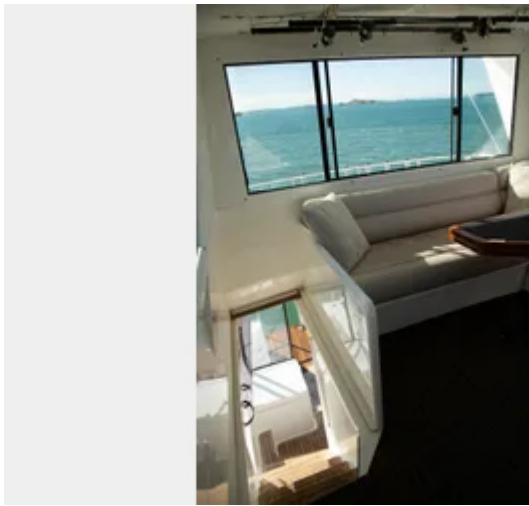
2 x SS sinks w/ pull out faucet  
Whirlpool 4-burner stove LPG  
Parmco electric oven  
Whirlpool microwave oven  
3 fridges and 1 freezer  
Aqua AC260 watermaker 260L/hr 230v (new Nov 2021)  
100L hot water dual system



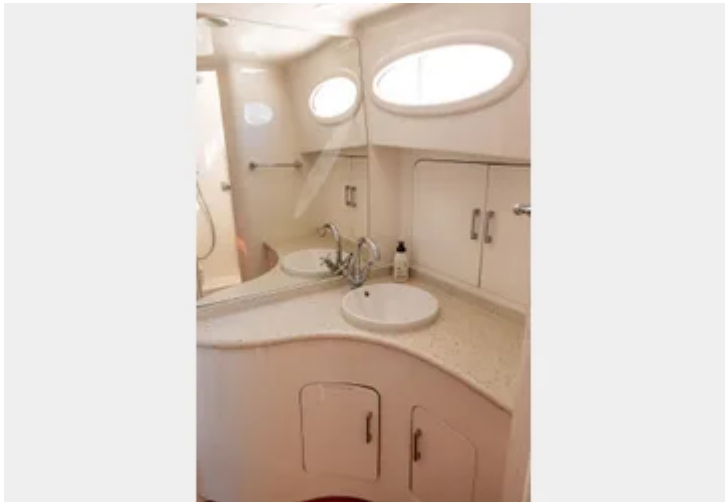
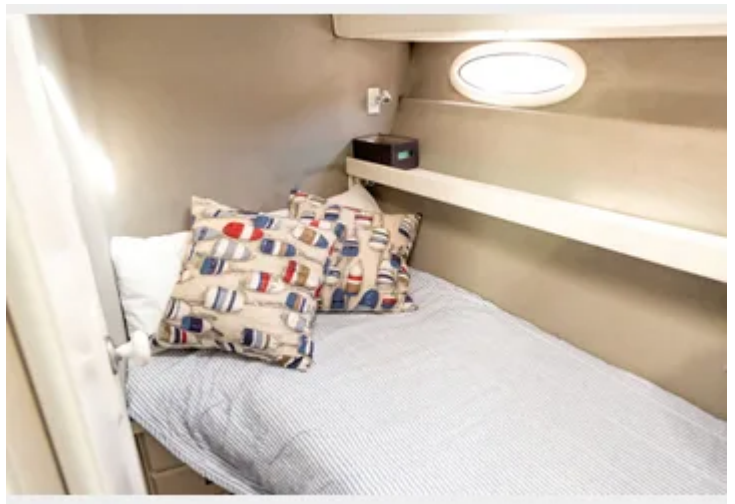
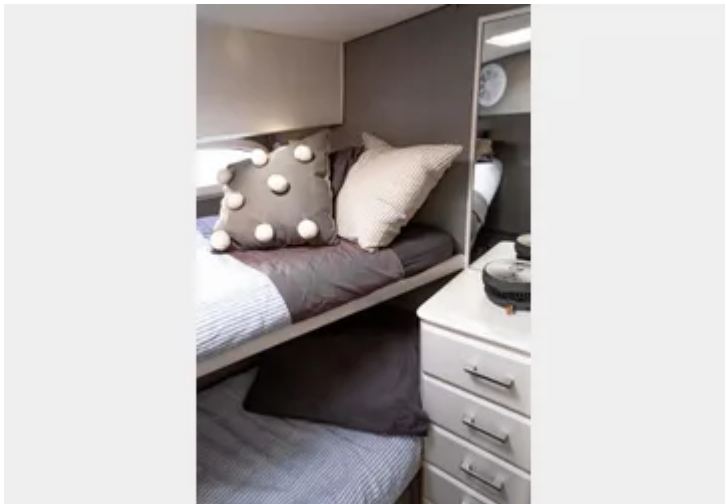












## A classic Kiwi-built motor yacht with an Orakei Marina berth available for purchase!

Launched in Dec 1989 and extensively serviced and upgraded through the years since 2016, including a recent engine service (Nov 5, 2025) -- Ricochet truly commands attention!

Retaining her striking Don Webb design and sturdy build, Ricochet has been meticulously renovated with modern systems and components throughout. This resilient vessel reflects exceptional care and attention to detail, with over \$220K invested in 2016 for new fibreglass-over-ply decks, resealed flybridge windows, touch-up painting, full LED lighting, new carpet, rewiring of all high-current DC circuits, new tender and outboard, upgraded 800AH house batteries, new port fuel tanks, anchor and chain, and a full top-end rebuild and service of both engines (including turbos, valves, injectors, intercoolers, and more).

Since 2018, an additional \$150K+ in upgrades has been completed. Highlights include new fishing gear lockers, BBQ, cockpit respray, and outdoor squabs (Dec 2018); an upgraded entertainment system (May 2020); new Zipwake trim tabs, flybridge respray, and stainless steel rail around the duckboard (Sept 2020); Aqua water maker installation (Nov 2021); new Paguro 8.5kVa genset (Dec 2022); new 800AH house batteries and AEP charger (Mar 2023); and in Sept 2023, a radar arch rebuild, new AIS, VHF and GPS aerials, Capstan overhaul, deck repairs, and resealing of all fittings.

Powered by twin 375hp Caterpillar 3208 turbo diesel shaft drive engines, recently serviced on 5<sup>th</sup> Nov 2025, Ricochet cruises comfortably at 14–15 knots. The spacious engine bay allows for easy maintenance, storage, or future upgrades. A true head-turner, Ricochet offers both reliability and comfort for those who appreciate fine craftsmanship and performance.

An 18M Orakei Marina berth is also available for purchase.

---

**Disclaimer:** Orakei Marine offers the details of this vessel in good faith but cannot guarantee or warrant the accuracy of this information nor warrant the condition of the vessel. A buyer should instruct his agents, or his surveyors, to investigate such details as the buyer desires validated. This vessel is offered subject to prior sale, price change, or withdrawal without notice.