

# Fleming 55 – 2011

€1,625,000 EUR



Located in Palma, Spain but available for delivery to NZ

## Boat Details

Boat Type	Pilothouse
Build	Fleming
Model	55
Year	2011
Location	Offshore
Hull Type	Monohull
Hull Material	Fibreglass (GRP)

## Mechanical

Engine Type	Twin Inboard
Engine Brand	Cummins QSC 8.3L
Thrusters	Bow and stern thrusters
Generator	1 x Onan 13.5kva and 1 x Onan 9.5kva

## Specifications

LOA	18.50M
LWL	15.50M
Beam	4.88M
Draft	1.52M
Displacement	36368kg
Fuel	3785L
Water	1135L

## Accommodation

Cabins	3
--------	---

## On Deck

Tender	Williams 325 Jet RIB
Anchor	2 x S/S anchors - 80lbs and 60lbs
Chain / Warp	110m and 60m

## Features

Flybridge hardtop with opening skylights and LED lighting

Teak on foredeck, side decks, aft deck and swim platform

Opacmare passerelle (2020)

Brower 1000lbs 8' reach davit crane with power rotation

Cruisair reverse cycle air conditioning

HRO Seafari water maker



**ORAKEI**  
MARINE

Jason Snashall  
021 929592

## ✔ Electronics

Raymarine G165 (FB) - 2 screen display for radar/plotter  
Raymarine G195 (PH) - 2 screens for radar and plotter (2014)  
Raymarine speed and depth  
Raymarine Autopilot  
Raymarine 4kw open array HD radar  
Raymarine stand alone E120 chart plotter and radar with closed scanner  
Raymarine AIS receiver  
Furuno Navtex  
VHF repeater handset  
KVH M5 domes - one with GPS receiver and other dummy  
FLIR night vision camera  
CCTV - cameras in engine room and aft cockpit  
4G and marina WIFI with connection in cockpit and repeaters in master cabin, pilothouse and cockpit  
TV connected to Bose sound system with DVD player

---

## ✔ Electrical Systems

230V, 50Hz, 32A shore power inlets  
House bank batteries - AGM 440 A/H  
Starboard engine/generator - AGM 255 A/H  
Port engine/generator - AGM 225 A/H  
110-amp externally regulated Balmar alternators off engines  
Isolation shore power transformer  
3000 watt inverter with bypass system

---

## ✔ Interior

Master cabin forward with double berth and large wardrobes and draws  
Master ensuite to port with vanity unit, shower, heads, towel rail, hanging lockers, draws and cupboards  
Port cabin with twin berths and outboard slide out bunk, hanging locker and bookshelves and draws  
Starboard cabin with upper and lower bunks, hanging locker and bookshelf  
Guest head to starboard with vanity unit, heads and separate shower  
Teak and Holly floors in all cabins  
Miele washing machine and Miele tumble dryer in passageway  
Teak dining table on drop down pedestal and two chairs

---

## ✔ Safety Equipment

Life rafts  
Fireboy automatic fire system

---

## ✔ On Deck (Additional)

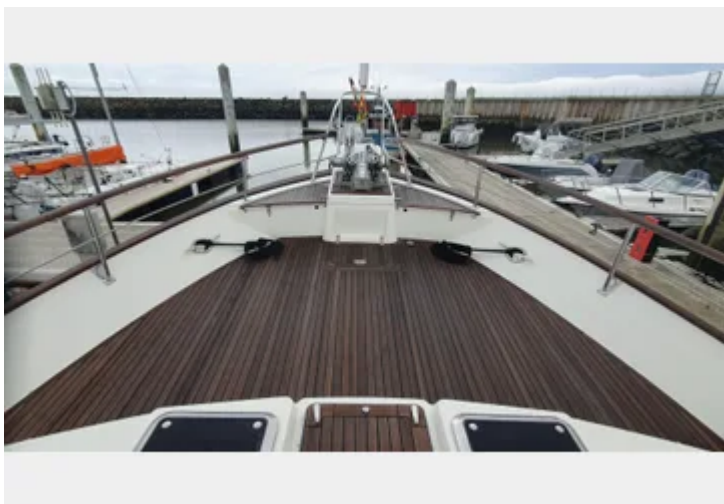
Flush lazarette hatches with hinges, gaskets, locks and drainage gutters  
Stainless steel telescopic swim ladder  
Starboard side locker with engine and thrusters controls  
Hot and cold cockpit shower fitting  
Shore power inlets  
Factory cockpit roof extension  
Salt & fresh water faucets on outside of port locker  
Portuguese bridge bulwark doors port and starboard  
Lofrans 24v DC, windlass with warping drum, pendant control

## ✔ Flybridge

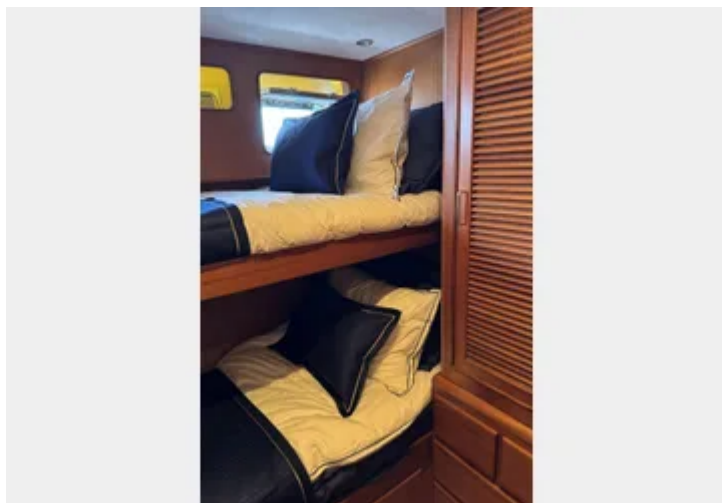
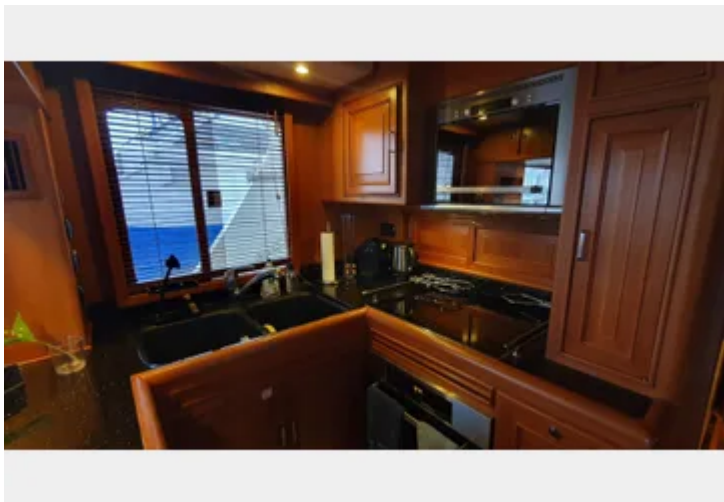
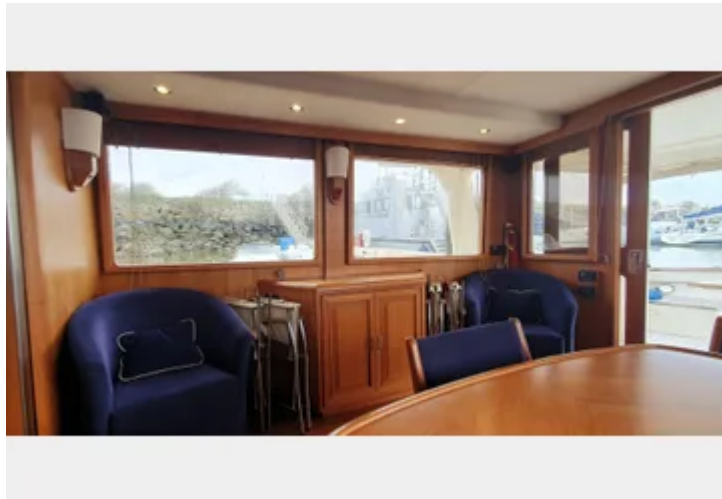
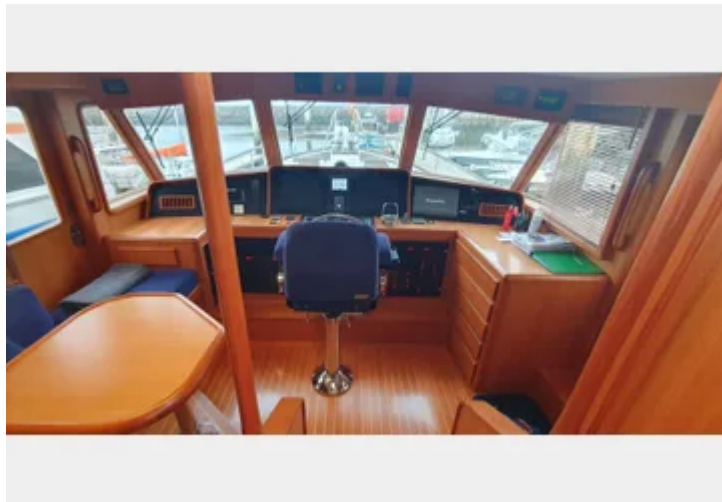
Covers for helm and seating area  
Teak table

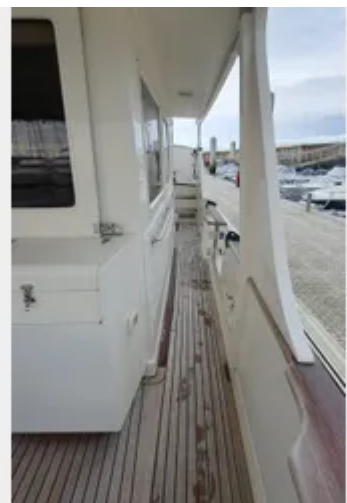
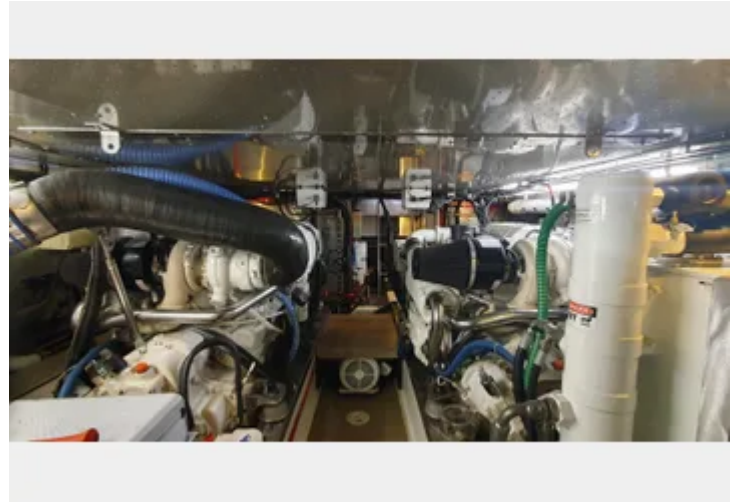
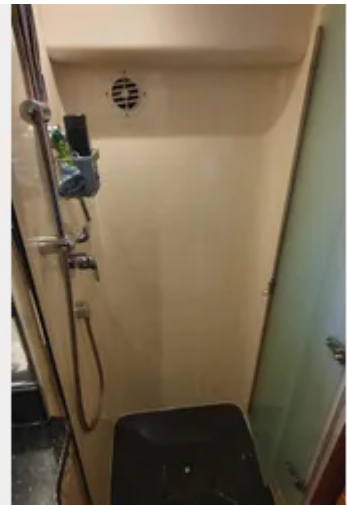
## ✔ Galley

Black Galaxy granite countertop  
Twin black/grey composite bowl with waste disposal unit  
Microwave and extractor fan  
Stainless steel oven  
4-burner induction hob with pot holders  
American style fridge/freezer  
Dishwasher with teak panel  
Dumbwaiter to flybridge

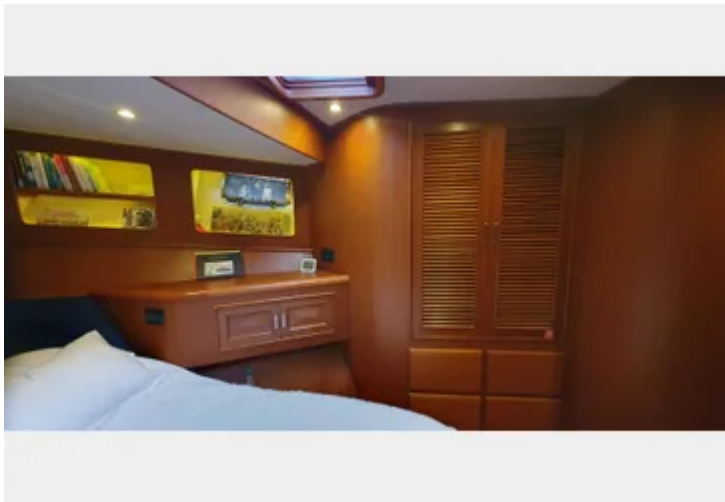
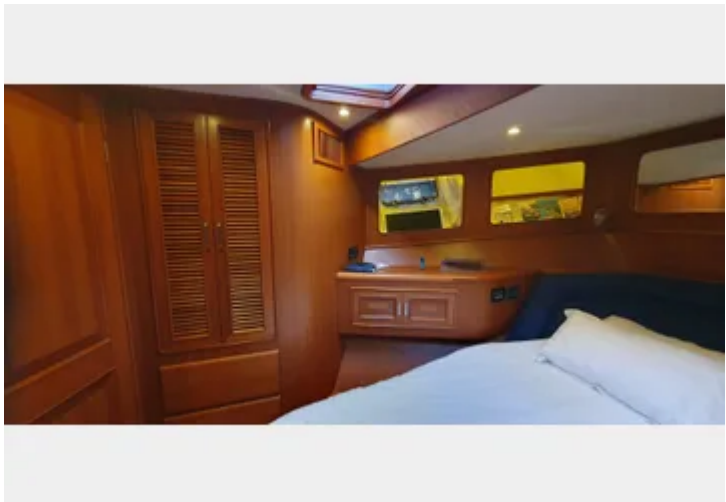
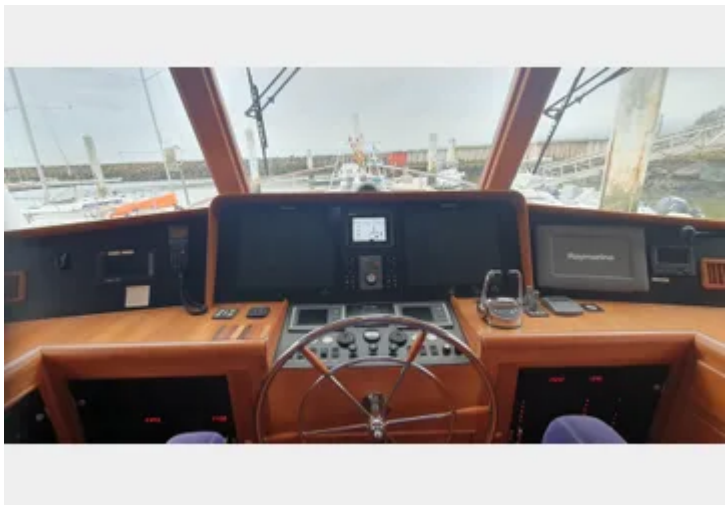
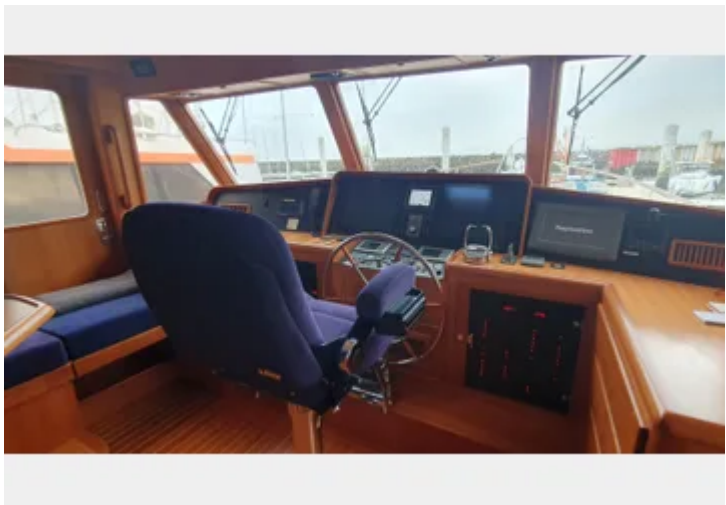
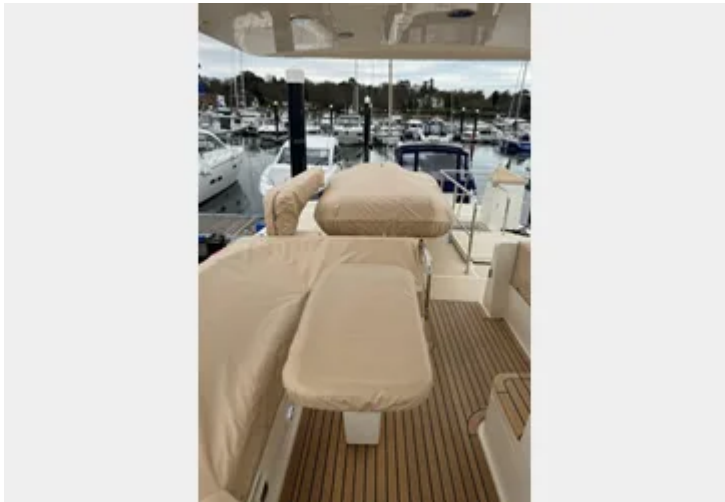
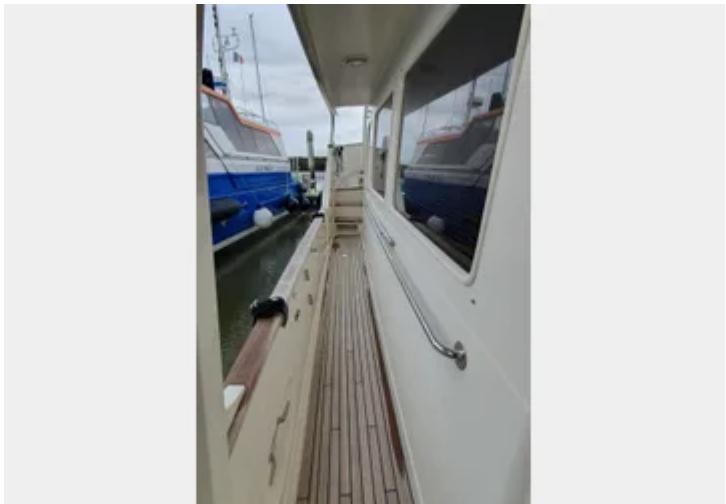


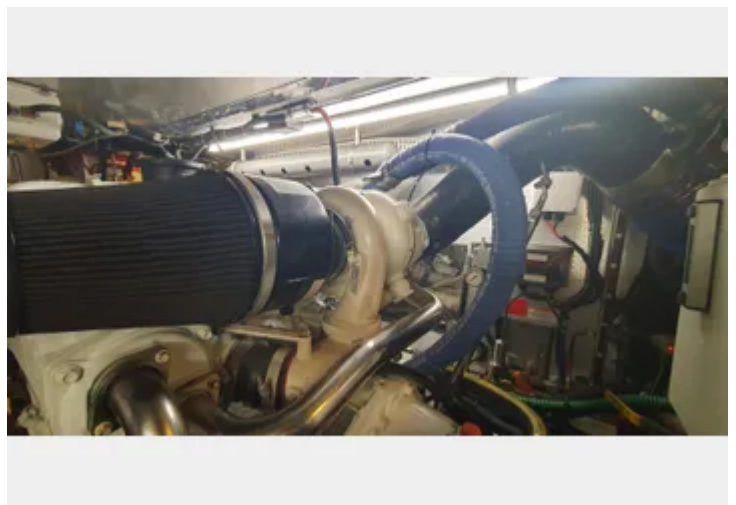
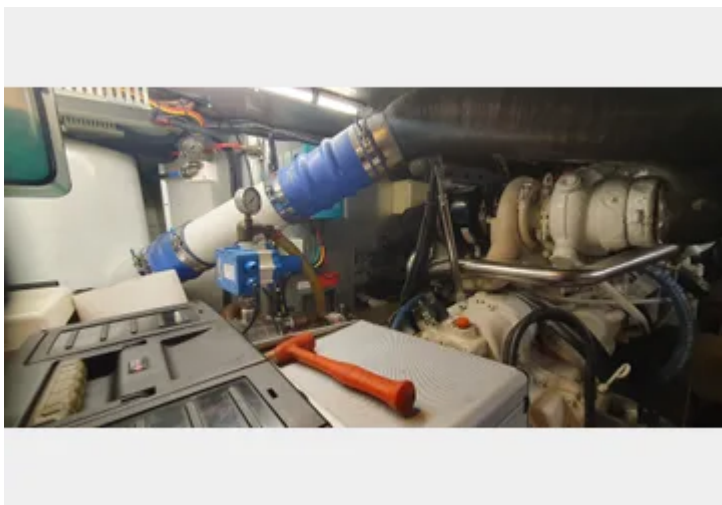
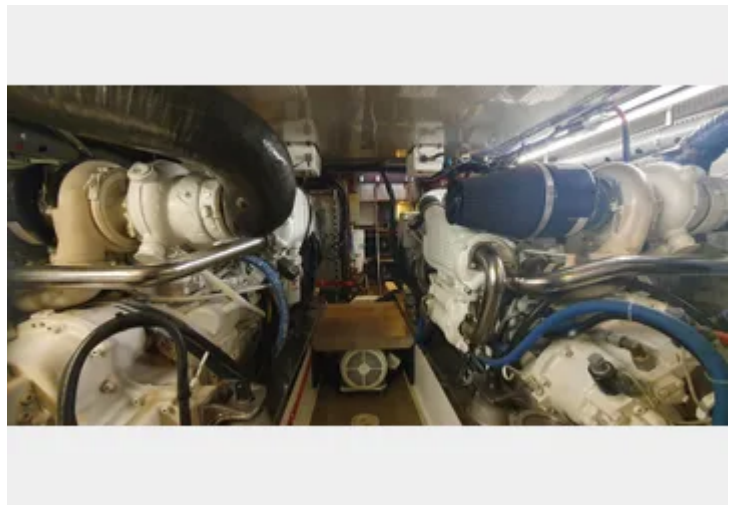
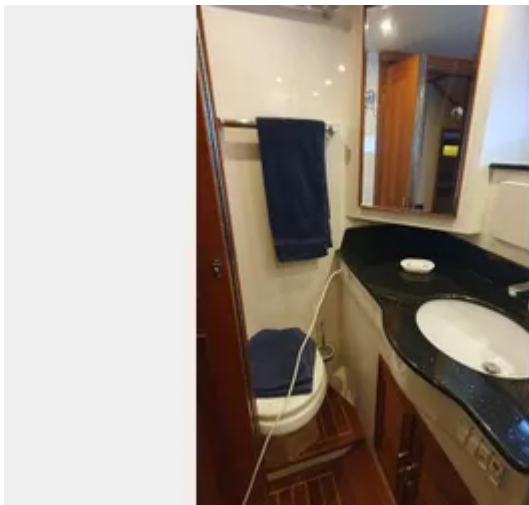
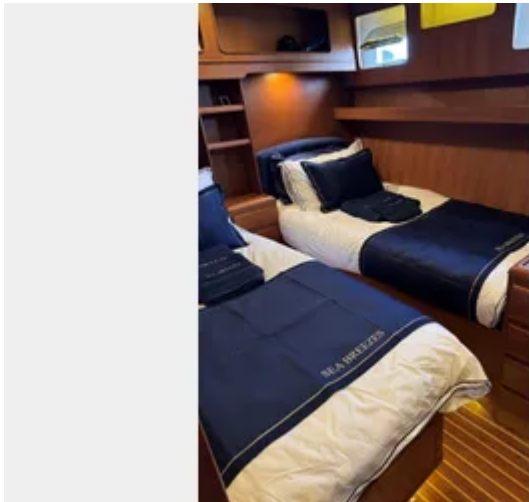
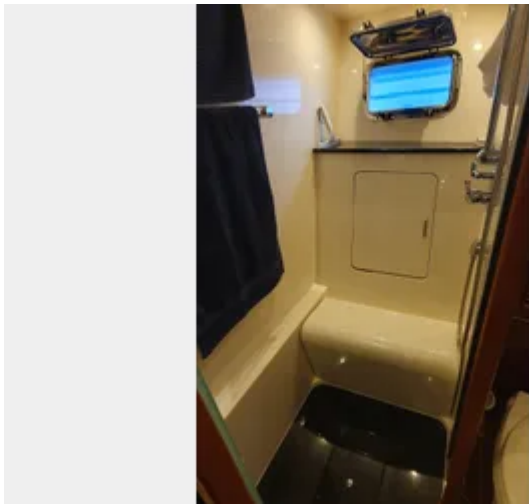




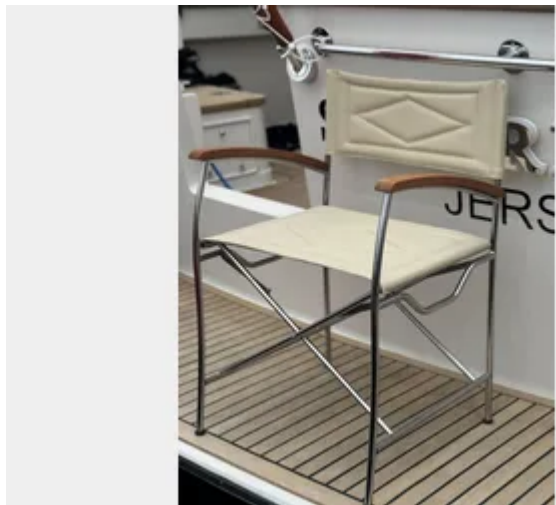
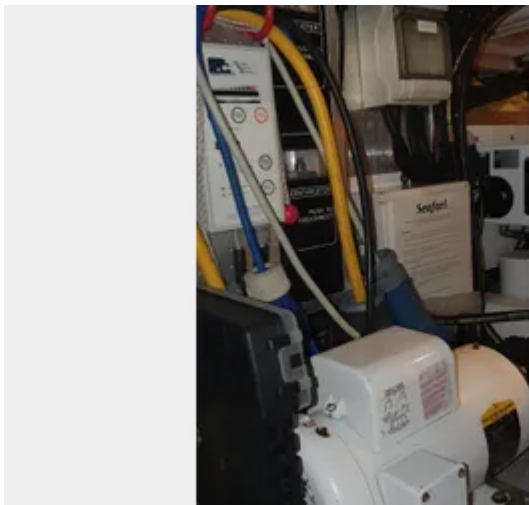
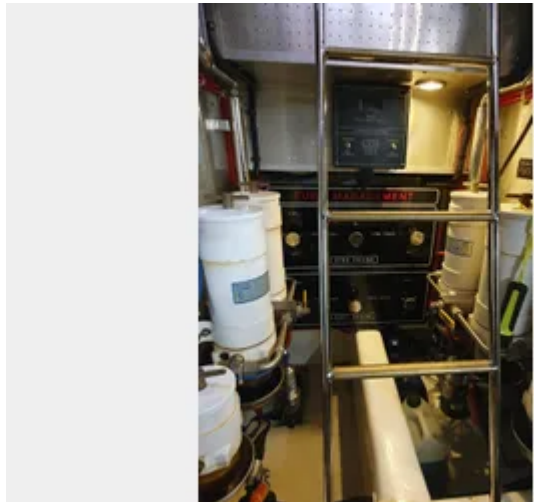
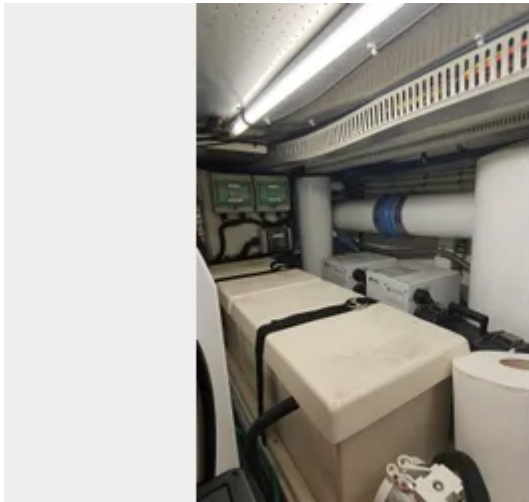














## Located in Palma, Spain but available for delivery to NZ

This Fleming 55 boasts both the desirable hardtop and extended boat deck, offering enhanced comfort and functionality. She has been upgraded with TRAC hydraulic stabilizers featuring the sought-after zero-speed-at-anchor capability, significantly increasing her appeal. In addition, her navigation systems have been updated with a range of modern enhancements. *SEA BREEZES* has recently undergone several months of comprehensive servicing and upgrades, including new soft furnishings, bedding, crane refurbishment, and more — making her an exceptional offering in today’s market.

---

**Disclaimer:** Orakei Marine offers the details of this vessel in good faith but cannot guarantee or warrant the accuracy of this information nor warrant the condition of the vessel. A buyer should instruct his agents, or his surveyors, to investigate such details as the buyer desires validated. This vessel is offered subject to prior sale, price change, or withdrawal without notice.