



Located in Antibes, France but available for delivery to NZ

Boat Details

Boat Type	Pilothouse
Build	Fleming
Model	60
Year	2023
Location	Offshore
Hull Type	Monohull
Hull Material	Fibreglass (GRP)

Mechanical

Engine Type	Twin Inboard
Engine Brand	MAN i6-800
No. of engines	2
Horsepower	800 HP
Thrusters	bow thruster SE250 15.5hp and stern thruster
Generator	17Kw, 60Hz Onan eQD

Specifications

LOA	19.9M
LWL	17.3M
Beam	5.33M
Draft	1.52M
Displacement	47899kg
Fuel	5488L
Water	1211L
Holding	625L

Accommodation

Cabins	3 + crew
Heads	2 + crew
Showers	2 + crew

On Deck

Anchor	100Lbs (45kg) S/S Ultra Anchor with S/S Ultra swivel
Chain / Warp	300ft (91m) length of 7/16" (12mm) S/S grade 60 German chain

Features

Teak on foredeck, side decks, aft deck and swim platform

1,000 lb capacity Steelhead ES 1000 davit with powered telescopic boom, luffing, hoisting and rotation, with radio remote control

Cruisair reverse cycle air-conditioning with remote compressors and Qht controls

Dual 24v DC Gianneschi fresh water pumps, pressure regulator, and flow



- Celebrating 20 Years -
ORAKEI
MARINE

Jason Snashall
021 929592

✔ Electronics

15" color touchscreen for FFM monitoring system including MAN engine instrumentation

Ritchie Compass with light & dimmer

FRP Radar arch with LED overhead lights

✔ On Deck (Additional)

Hot & cold shower fittings recessed on transom, with quick release shower head and flexi hose

Smartplug shorepower inlet 220v, 50A, (European model 230v, 32A)

Chocks at hull sides and transom

Cockpit with flush lazarette hatch with hinge, gaskets, locks & gutters with drains

Stainless steel telescopic swim ladder

Wide teak coaming around cockpit

Stainless steel ladder to flybridge with teak treads

Portuguese bridge

Two 24v DC Maxwell RC12, windlasses with pendant control

✔ Electrical Systems

Two Mastervolt 20-amp 24v to 12v DC-DC converters with 12v battery back-up system

Two Isolation transformers for shorepower

600 A/H house battery bank - 8 pcs Lifeline GPL- 6CT AGM (6 volt) batteries

255 A/H port engine/genset starting battery bank - 2 pcs Lifeline GBL-8DL

255 A/H stbd engine/genset starting battery bank - 2 pcs Lifeline GBL-8DL

Balmar MC-624 alternator regulator with house battery bank temperature sensor

✔ Interior

Saloon entertainment center, teak cabinetry & lockers full length from galley refer to aft bulkhead, with powered TV lift

Self-contained air-conditioning for crew cabin

Enclosed crew head, shower and sink in central compartment with ladder to cockpit hatch access

✔ Galley

Undermount stainless-steel double sink

Swivel faucet with removable spray head

InSinkErator food waste disposer

Stainless steel convection microwave oven with cooktop overboard vent

Three burner Miele flush mount induction cooktop

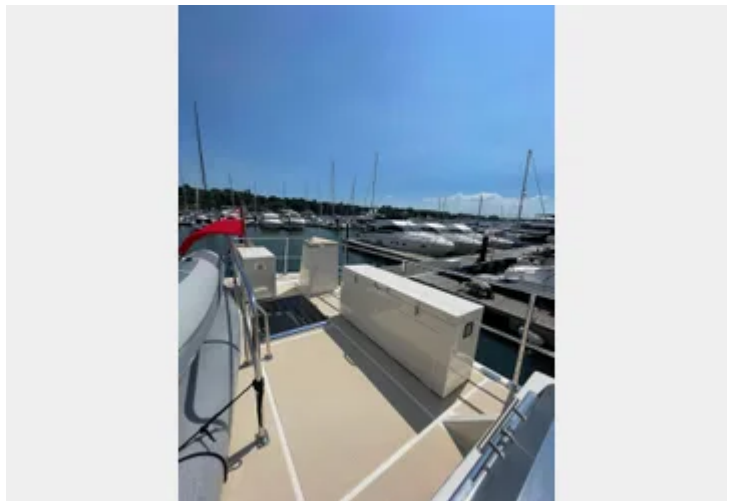
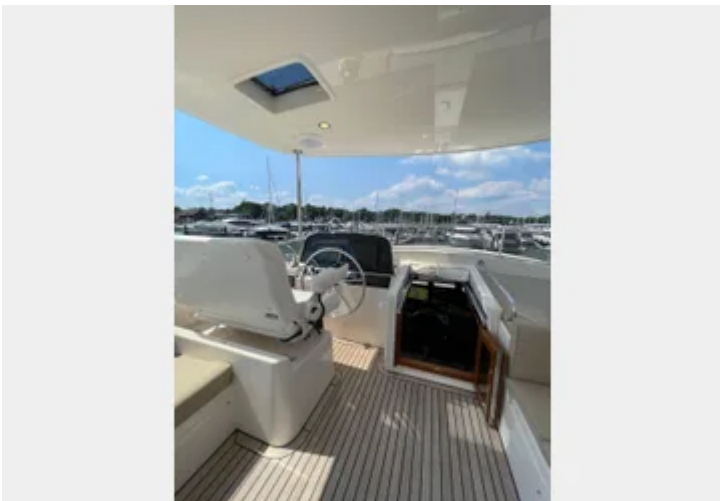
Removable stainless steel potholders for cooktop

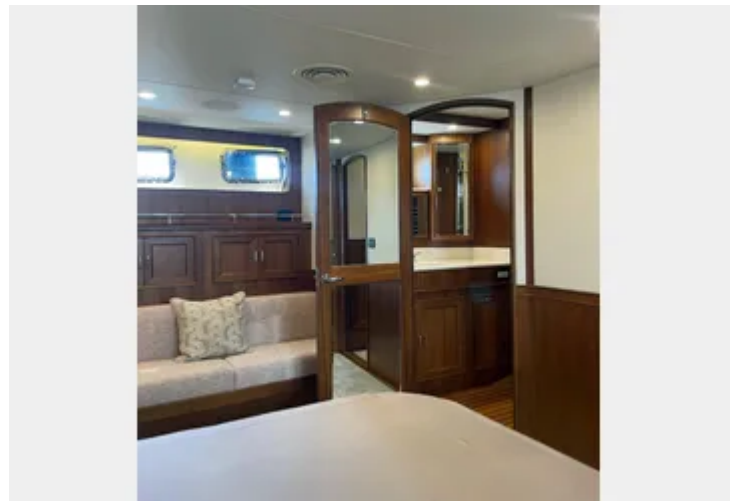
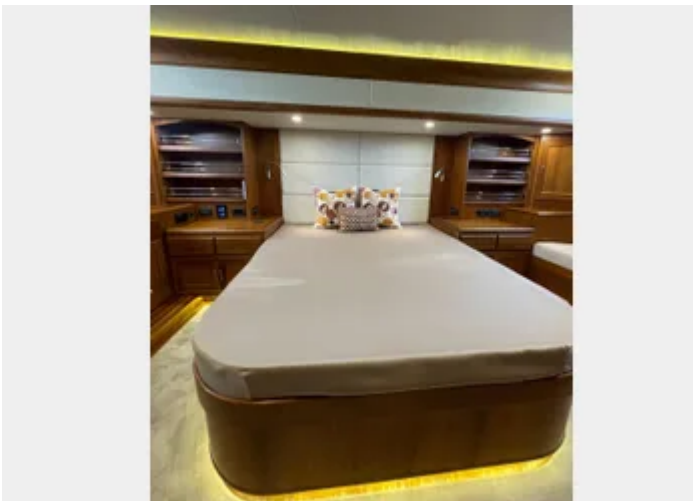
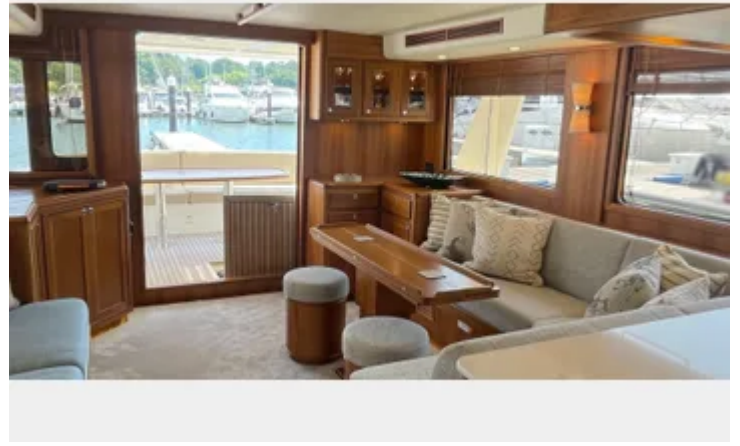
20.5 cu ft side by side refrigerator/freezer

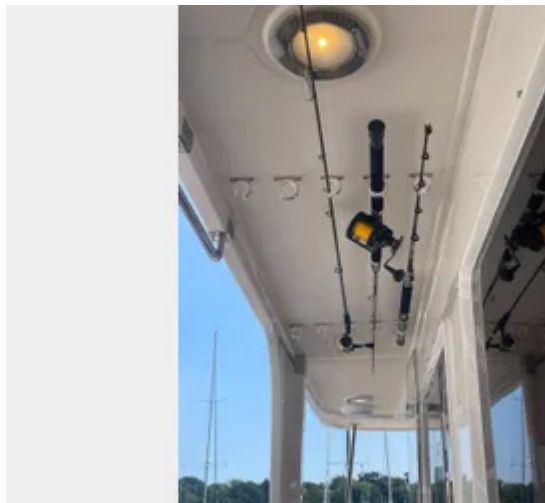
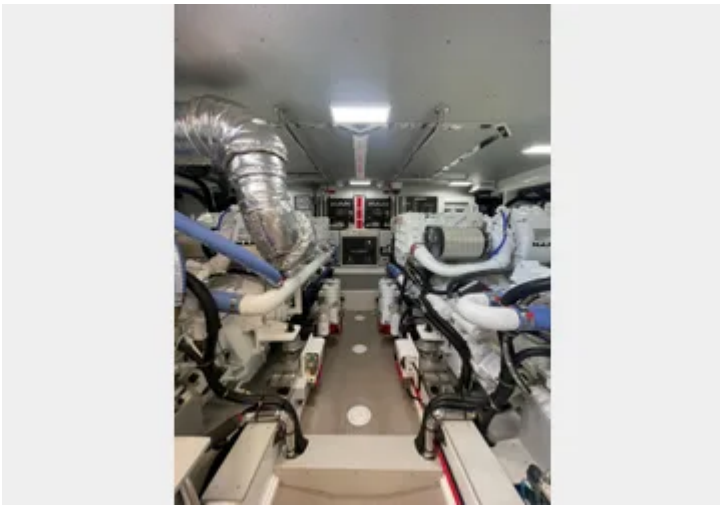
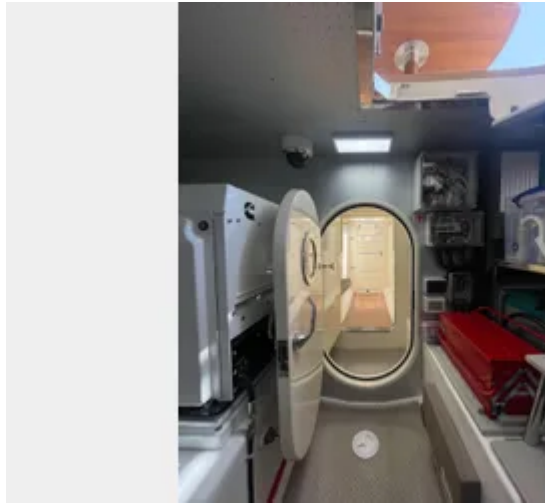
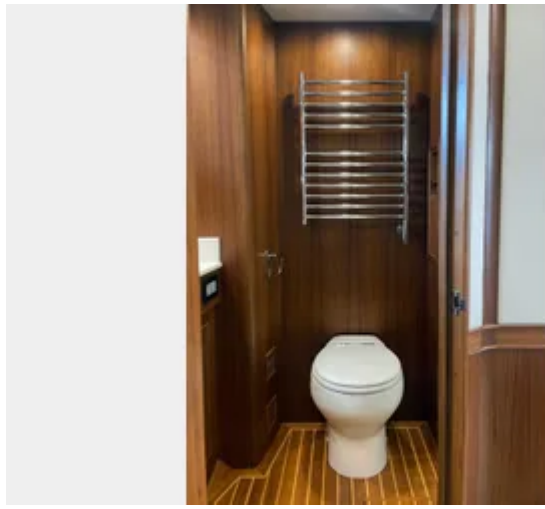
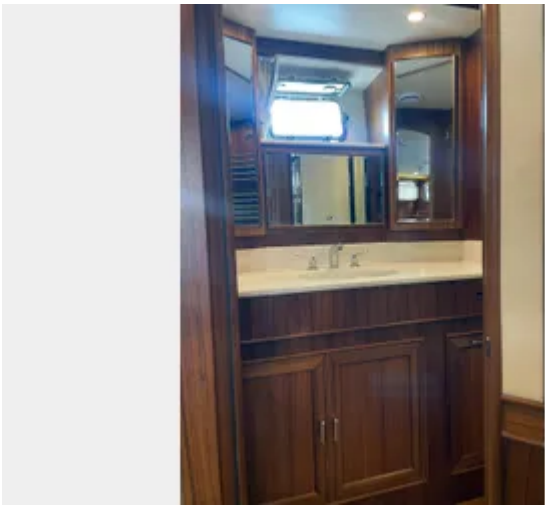
✔ Safety Equipment

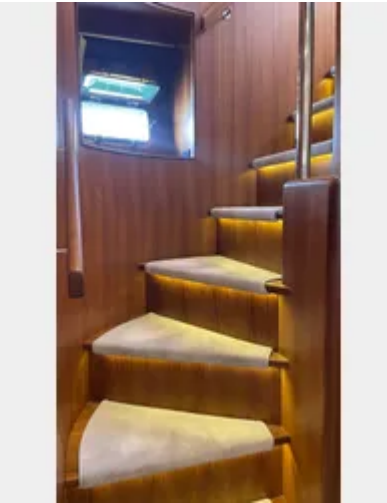
Fire system repeater alarm

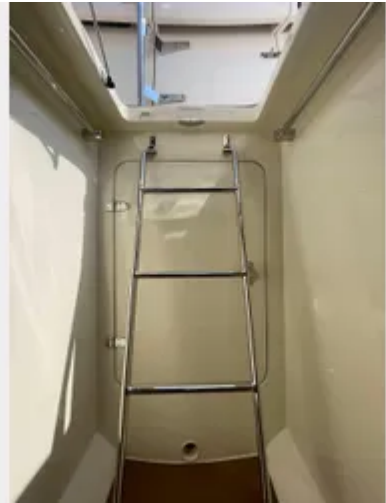
Fire suppression system with automatic engines/genset/blowers' shutdown











Located in Antibes, France but available for delivery to NZ

An excellent opportunity to skip the current waiting list and acquire the first Fleming 60 featuring a fully fitted crew cabin with a single berth. Delivered in April 2024, she has been meticulously maintained in near new condition.

This vessel boasts a fully specified build, including Twin Disc joystick with position hold, a hardtop, and a wide range of custom details and options—such as bespoke interior fabrics and high-end Garmin navigation and communication systems.

She benefits from a full ceramic coating applied this year and comes equipped with a Highfield 390 tender. Built to full Mediterranean specification, she includes comprehensive sun covers, screens, and a full mesh flybridge enclosure. Additional premium features include lithium batteries, Humphree electric DC stabilisers, and she is the first Fleming 60 to incorporate GRP capping rails.

There is little this Fleming 60 doesn't offer. She is presented for sale as the owner is moving forward with a larger Fleming build. Both engines and generators have been recently serviced—she's fully prepared and ready to cruise.

Disclaimer: Orakei Marine offers the details of this vessel in good faith but cannot guarantee or warrant the accuracy of this information nor warrant the condition of the vessel. A buyer should instruct his agents, or his surveyors, to investigate such details as the buyer desires validated. This vessel is offered subject to prior sale, price change, or withdrawal without notice.