



Located in Antibes, France but available for delivery to NZ

Boat Details

Boat Type	Pilothouse
Build	Fleming
Model	65
Year	2005
Location	Offshore
Hull Type	Monohull
Hull Material	Fibreglass (GRP)

Mechanical

Engine Type	Twin Inboard
Thrusters	Sidepower proportional bow and stern thruster controls (2021)
Generator	Cummins Onan 19kW Generator, Hours – 1020 (2021) and Cummins Onan 13.5kW generator, Hours- 875

Specifications

LOA	21.6M
LWL	18.9M
Beam	5.7M
Draft	1.52M
Displacement	56546kg
Fuel	6435L
Water	1514L

Accommodation

Cabins	3
Berths	6 + Pullman bed in PH
Heads	2 + PH day head
Showers	2 + 1 cockpit shower

Features

Fully renovated galley (2021) with Corian worktop, double sink, and new appliances
 Steelhead crane ES1500
 Sur Marine Tender (4.8m/60 hp Yamaha/Stereo System) with custom cover (2021)
 Carbon fibre passarelle (2021)
 40,000 Lumen white underwater lights (2021)

✔ Electronics

Raymarine 22" Axiom XL Display x 2 (2021)
Raymarine 16" Axiom Pro Display x 2 (2021)
Raymarine 9" Axiom Display x 3 (2021)
Raymarine i60 Wind Display (2023)
Raymarine i70 Instrument Display x 2 (2021)
Raymarine ACU 400 Autopilot control unit (2021)
Raymarine P70Rs Autopilot Display (2021)
Simrad Backup autopilot unit
ICOM VHF M605 unit (2021)
Custom Engine, Electrical and Tank control software (2021)
Starlink router and control HUB (2023)
Pepwave Max BR1(2021)
Sanshin Searchlight controls (2021)
Cummins Onan generator controls (2021)
Sidepower proportional thruster controls (2021)
Sleipner zero speed stabiliser controls (2021)
Main engine Start & Stop buttons (2021)
Glendinning engine controls (2021)
Underwater light switches (2021)
Raymarine C300 camera x 4 (2021)
VDO Rudder angle indicator (2021)
Cummins engine monitors

✔ Electrical Systems

Energy solutions dock power unit (15kVA) (2022)
Master-volt 4KW Inverter x 2 (2022)
Master-volt battery percentage monitor x 1 (2021)
Master-volt 24v 110A battery charger x 2 (2023)
Master-volt 12v 30A battery charger (2023)
24V 110Amps alternator x 2
24 Lithium-ion batteries (1250Ah) (2023)
AGM 210ah engine start batteries x 4 (2023)
230V/50A shore power cables 25m x 2 (2023)

✔ Interior

✔ On Deck (Additional)

Starboard GRP paddle board x 2 with custom covers and SS
Paddle board rack (2021)
Starboard inflatable paddle board (2023)
Inflatable Row air kayak 16', Carbon fibre rig (2023)
Dualtron electric scooters x 2 (2022)
Varnished burgee flagpole (2021)
Maxwell windlasses RC12 with chain counters x 2 (2023)
60kg Anchor & 80m of chain
75kg Anchor & 120m of chain (2021)
Foredeck custom cushions (2023)
Stainless steel custom name plates (2022)
Hepworth windscreens wipers (2021)
Custom aft sundeck canopy and rear panels (2021)
Custom aft varnished teak table with SS stand (2021)
Lewmar V5 Aft winches with foot controls (2022)
Varnished rear flagpole (2021)
Custom stainless steel aft deck handrails (2021)
Winter and sun cover for windows, seating and tables (2021)

✔ Flybridge

Double white Stidd seat (2021)
Varnished teak table (2021)
Electric BBQ with custom mount (2021)
Custom mast (2021)
Custom hinged forward-facing reclining seats (2021)
Raymarine 16" Axiom Pro Display x 2 (2021)
Raymarine 9" Axiom Display x 2 (2021)
Raymarine i70 Instrument Display x 2 (2021)
Raymarine P70Rs Autopilot Display (2021)
Raymarine Flir Camera MC300 (2021)
Raymarine Augmented Reality Camera (2021)
Raymarine 4KW magnum 6ft Radar
Raymarine i60 wind sensor (2023)
ICOM VHF Unit (2021)
Glendinning engine controls (2021)
Main engines Start & Stop buttons (2021)
Glendinning Pro Joystick (2023)
Sidepower proportional bow and stern thruster controls (2021)
Sanshin searchlight controls (2021)
Sanshin Spotlight (2021)
Shakespeare marine VHF Ariel's 19FT x 2 (2021)
Pepwave Antenna x 2 (2021)
Starlink Maritime antenna (2023)
Rear LED spotlight (2021)
Fusion speaker 6.5" x 2 (2021)

✔ Galley

Master cabin - large king-sized bed (2021), large forward wall mirror (2021), hydraulically operated under bed storage, his and hers hanging lockers and drawers, reading lights to the port and starboard of the bed (2021), Raymarine 9" axiom slave display with alarms (2021), opening skylight with blind and bug screen (2021)

Master ensuite - shower, Tecma marine head, marble worktops, stainless steel fittings, heated towel rails (2021), dressing mirror

VIP cabin - twin single beds, large locker and lots of drawers, reading lights over each bed, Teak desk and bookshelf

Bunk cabin - twin single bunk beds, locker and lots of drawers, reading lights over bunk, Teak desk and bookshelves above

Guest head - marble worktops with under mounted basin, stainless steel faucets, Tecma marine head, heated towel rail (2021), glass shower with stainless steel fittings, dressing mirror

Samsung washing machine (2022)

Miele dryer

55" TV Samsung QLED with speakers (2023)

TV Lift to conceal TV into hidden pocket (2023)

Apple TV (2023)

4 surround speakers with fusion amplifier (2021)

Fusion Stereo MS-RA770 (2021)

Adjustable height varnished teak table

Custom Perennials Fabric on all seating (2021) - saloon

2 x custom foot stalls (2021)

Handmade Perennials carpet (2021) - saloon

Drinks fridge (2021) - saloon

White leather Stidd seat (2021) - PH

Custom sofa using Perennials Fabric (2021) - PH

New custom panels finished in black Ultrasuede & Ultraleather (2021) - PH

Demister blowers (2021) - PH

AC & DC breaker panels (2021) - PH

8 large drawers (2021) - PH

Stainless steering wheel (2021) - PH

Wempe stainless steel barometer (2021) - PH

Vanaro white Corian worktop with double stainless-steel sink (2021)

Quooker instant hot water tap (2021)

InSinkErator food waste disposal unit (2021)

Neff oven (2021)

Neff 4 section induction hob (2021)

Stainless steel pan holders

Neff dishwasher (2021)

Filtered extraction fan (2021)

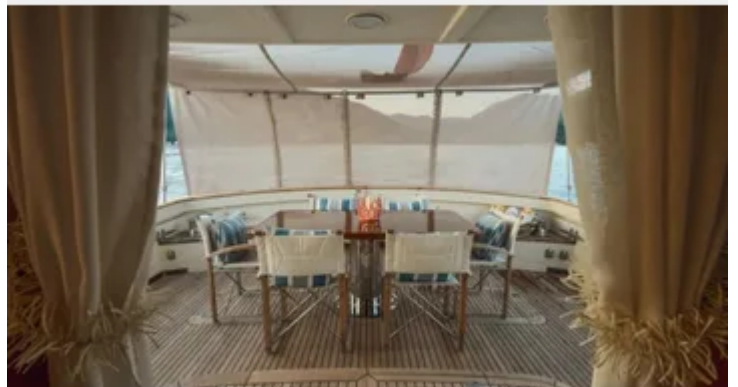
Wempe clock (2021)

Double large bins pull out draws (2021)

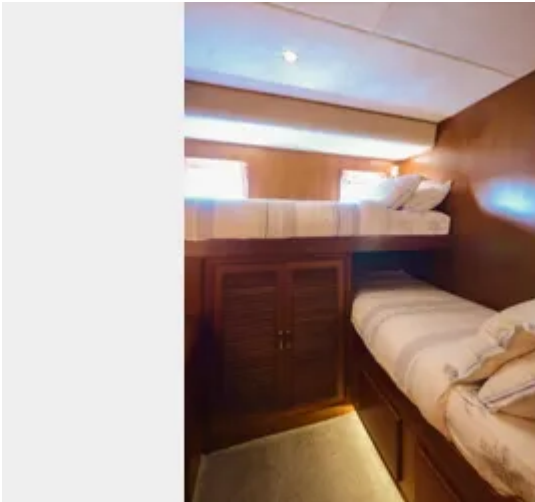
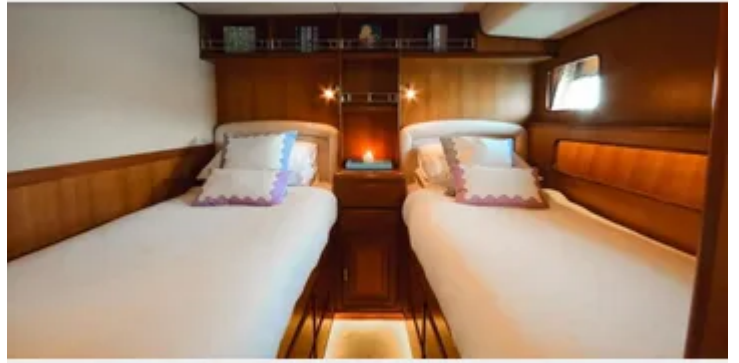
Samsung American style fridge freezer with water and ice cube dispenser (2021)

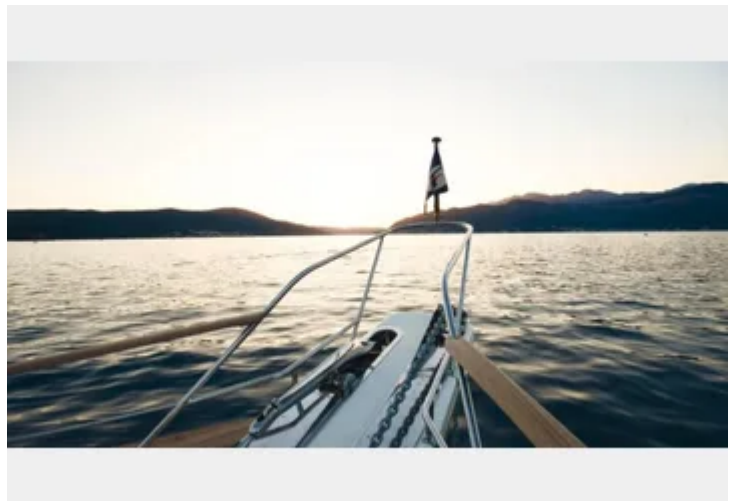
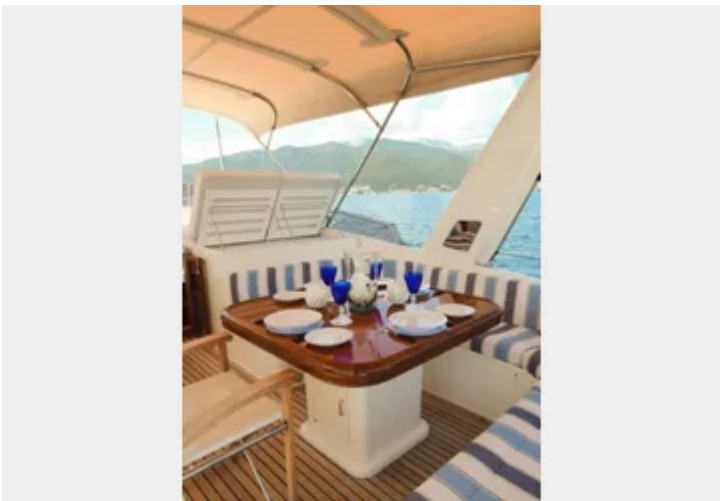
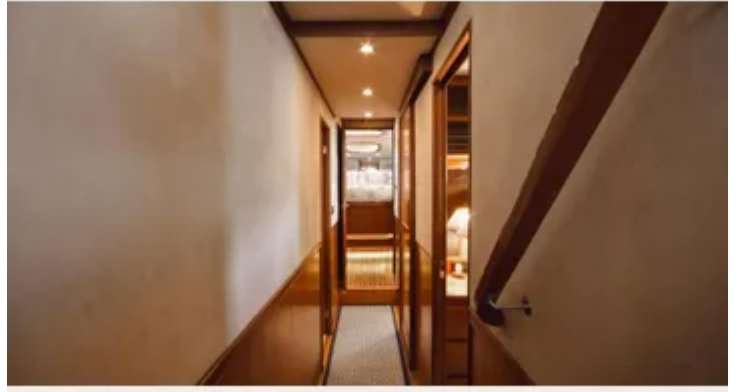
✔ Safety Equipment

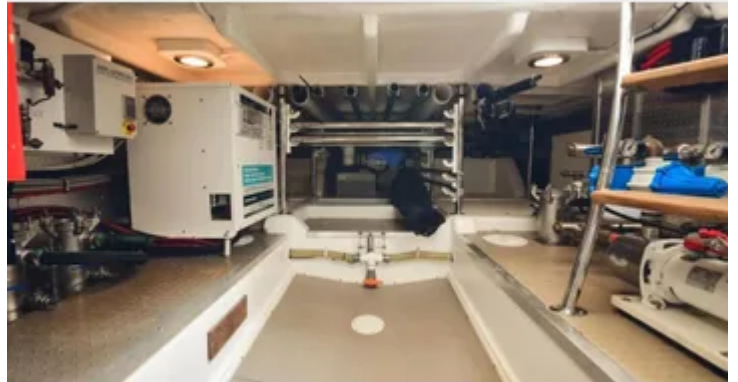
8-person Ocean Safety life raft (2021)











Located in Antibes, France but available for delivery to NZ

This stunning Fleming 65 is proudly offered for sale by her current owners, who have continually upgraded her following a comprehensive refit — making her arguably one of the finest examples of her era. While sharing a similar layout to the Fleming 55, the 65 offers increased space throughout, particularly in the aft deck, main salon, and boat deck. With generous fuel capacity, she is well-suited for long-range cruising, all while providing exceptional comfort.

The extensive refit included a complete overhaul of the electronics and navigation systems at both the wheelhouse and flybridge, the installation of zero-speed stabilizers, an automatic watermaker, an additional 19.5kW generator, a shore power converter, a luxurious SUR tender with a 60hp engine, and a modernized galley.

Inside, the yacht features a professionally designed interior with upgrades to the salon, galley, heads, and cabins. This refined aesthetic continues throughout the wheelhouse, flybridge, and aft deck, resulting in a beautifully presented and tastefully finished Fleming 65.

Disclaimer: Orakei Marine offers the details of this vessel in good faith but cannot guarantee or warrant the accuracy of this information nor warrant the condition of the vessel. A buyer should instruct his agents, or his surveyors, to investigate such details as the buyer desires validated. This vessel is offered subject to prior sale, price change, or withdrawal without notice.