

Jeanneau Sun Odyssey 410 – 1/4 Share

\$214,000 NZD



An exciting opportunity to own a 1/4 share of the prestigious, award winning Jeanneau Sun Odyssey 410

i Boat Details		🔧 Mechanical		☰ Specifications	
Boat Type	Sail Yacht	Engine Type	Inboard	LOA	12.35M
Build	Jeanneau	Engine Brand	Yanmar	LWL	11.99M
Model	Sun Odyssey 410	Drive Type	Sail Drive	Beam	3.99M
Year	2024	No. of engines	1	Draft	2.14M
Location	Auckland	Horsepower	45 HP	Bridge Clearance	17.70M
Hull Type	Monohull	Cruising speed	8 Knots	Displacement	8000kg
Hull Material	Fibreglass (GRP)			Weight	8000kg
Fuel Type	Diesel			Fuel	195L
				Water	528L
				Holding	80L

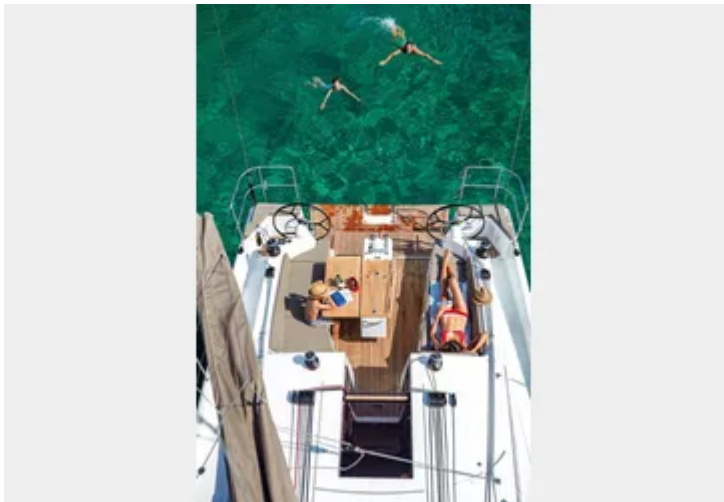
🛖 Accommodation	
Cabins	3
Berths	6
Heads	2
Showers	2 + 1 Cockpit shower



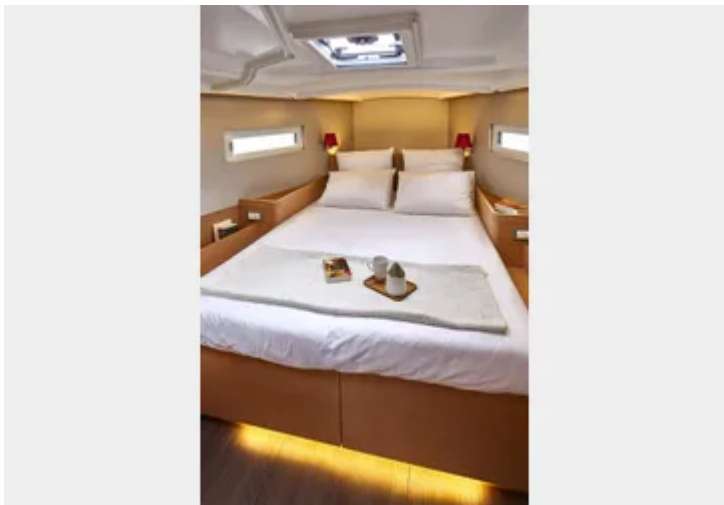
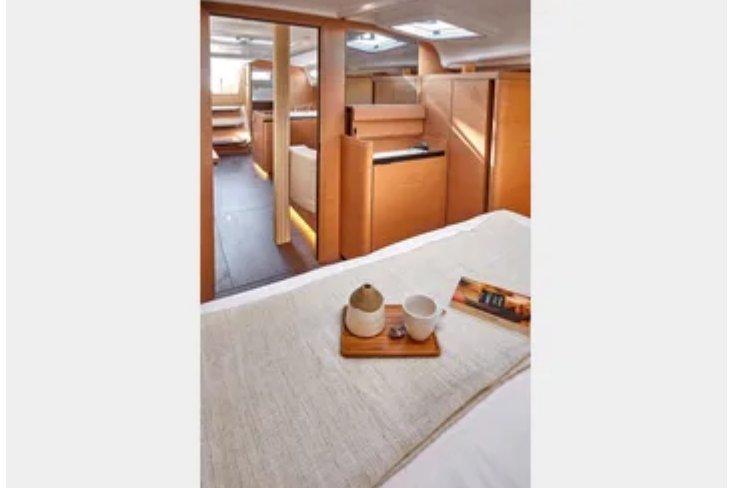
ORAKEI  
MARINE

Jason Snashall  
021 929592  
jason@orakeimarine.co.nz

Scott Oldfield  
021 799794  
scott@orakeimarine.co.nz







# An exciting opportunity to own a 1/4 share of the prestigious, award winning Jeanneau Sun Odyssey 410

Berthed at Orakei Marina, Auckland's most sought-after location that offers unrestricted access to the Hauraki Gulf with easy access from the motorways.

Whether you don't have the time for yacht maintenance or would like to enter into the luxury sailing scene for less than the price of a Range Rover!

Shared ownership spreads the costs whilst giving you more available use days per year than the average kiwi yachtie goes out on the water!

Sailing has never been more enjoyable than aboard the Sun Odyssey 410. With her elegant yet powerful hull, the Sun Odyssey 410 perfects the art of sailing and comfort on board.

Designed by Marc Lombard, the 410 benefits from all the latest advances in technology and design. She blends practicality with style, having a lower boom which facilitates easier access to the sails. Her recessed side decks without obstruction allows for free movement on deck.

The negative bow increases waterline length and improves bow penetration into the water, this also allows for less drag and greater speed.

She also has a hard chine running the full length of the hull making it more powerful and stable and the self-aligning rudders and bearings give a responsive feel on the helm. Her powerful bow thruster gives her great maneuverability.

Additional Features : Depth Sounder, Freezer, Fridge, GPS/Sat Nav, Power Capstan, Twin Rudders, Winged Keel, 3 Cabin 2 Head Version, Trim Level Premiere, Raymarine Cruising Electronic Pack, Anchoring Kit, Bimini with LED Lamps

---

**Disclaimer:** Orakei Marine offers the details of this vessel in good faith but cannot guarantee or warrant the accuracy of this information nor warrant the condition of the vessel. A buyer should instruct his agents, or his surveyors, to investigate such details as the buyer desires validated. This vessel is offered subject to prior sale, price change, or withdrawal without notice.