

# Navigator Classic 53

\$525,000 NZD



**The Navigator Classic 53 can also be sold as a package deal with a 18m Hobsonville Marina berth for \$575,000.00**

This Navigator Classic 53 in the perfect live a board package and is also great for extended trips away with plenty of room.

i Boat Details		🔧 Mechanical		☰ Specifications	
Boat Type	Launch	Engine Type	Twin Inboard	LOA	18M
Build	Navigator	Engine Brand	Volvo Penta	Beam	4.5M
Model	53	Drive Type	Shaft Drive	Draft	1.4M
Year	1998	No. of engines	2	Fuel	2300L
Location	Auckland	Horsepower	370 HP	Water	600L
Hull Type	Semi Displacment	Hours	1763 Hrs	Holding	200L
Hull Material	Fibreglass (GRP)	Thrusters	Bow thruster & Stern thruster		
Fuel Type	Diesel	Cruising speed	15-18 Knots		
		Max. speed	21 Knots		
		Generator	Yes		

🛏 Accommodation		✅ On Deck		✅ Features	
Cabins	3	Tender	3.9m Centre console tender	Generator	
Berths	6	Outboard	35hp Mercury	Water Maker	
Heads	2	Anchor	Plow Anchor	3x Solar panels	
Showers	2 + 1 Cockpit Shower				



**ORAKEI**  
MARINE

**Scott Oldfield**  
021 799794  
scott@orakeimarine.co.nz

**Jason Snashall**  
021 929592  
jason@orakeimarine.co.nz

✔ **Electronics**

Simrad MFD,s  
Simrad Radar  
Simrad Autopilot  
Simrad VHF  
Intercom phone throughout boat  
Chain Counter

---

✔ **Electrical Systems**

Near new house & start batteries  
Inverter/Charger  
Shore Power  
Generator

---

✔ **Interior**

TV in saloon plus master & VIP cabins  
3 Seater Leather recliner plus 2 bar stools  
Honey Maple coffee table  
Washing machine & Dryer

---

✔ **On Deck (Additional)**

Large Chest Freezer

✔ **Flybridge**

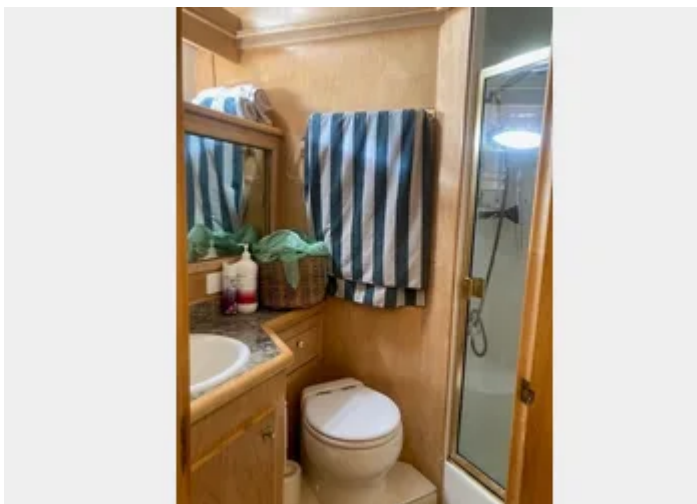
Davit for tender

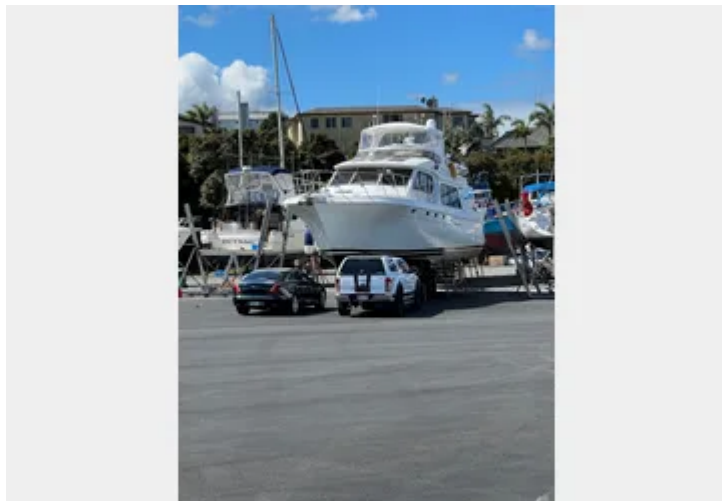
✔ **Galley**

Microwave  
Air Fryer  
Lpg oven & Hob  
Fridge/ Freezer with Ice Maker  
Chest Freezer in cockpit

---







## **The Navigator Classic 53 can also be sold as a package deal with a 18m Hobsonville Marina berth for \$575,000.00**

This Navigator Classic 53 in the perfect live a board package and is also great for extended trips away with plenty of room.

Introducing the Navigator Classic 53!

Please note: more exterior photos to come early 2026.

With the purchase of this vessel the 18m Hobsonville Marina berth can also be purchased as a package deal or seperately after the vessel has sold.

This vessel is very well equipt and is the perfect boat for going away for extended periods and would also make a great live a board boat.

The interior has 3 cabins with a very large master cabin with ensuite, vip double and a double bunk cabin. There are TV,s in both cabins along with a TV in the saloon.

In the saloon there is a 3 seater leather recliner plus 2 bar stools and she also has a well equipt galley.

The main helm has has multiple upgrades with Simrad MFD,s, Radar and Autopilot.

She is also equipt with a generator and inverter so power is not a worry on this vessel.

On the fly bridge there is ample space, a second helm, a davit for lauching the 3.8m center console tender that has recently had new pontoons fitted with 35hp Mercury outboard engine.

The aft deck is a great place to relax with enclosed clears for protection on those windy and rainy days and there is also a large freezer which is great for those extended trips away.

This Navigator Classic 53 is in good condition and there is ample storage throughout the boat along with multiple areas to entertain or just hang out.

If you are looking for a large volume passage maker to spend a lot of time on, this Navigator 53 is a must view!

For more information or to arrange a viewing please call the listing broker Scott Oldfield on 021 799794 or [scott@orakeimarine.co.nz](mailto:scott@orakeimarine.co.nz)

---

**Disclaimer:** Orakei Marine offers the details of this vessel in good faith but cannot guarantee or warrant the accuracy of this information nor warrant the condition of the vessel. A buyer should instruct his agents, or his surveyors, to investigate such details as the buyer desires validated. This vessel is offered subject to prior sale, price change, or withdrawal without notice.