

Nordhavn 56 Motorsailer MK II

\$1,200,000 NZD



Your chance to own one of only nine made!

Luxurious in its quality and comfort unparalleled. Available now.

Boat Details

Boat Type	Trawler
Build	Nordhavn
Model	56MS
Year	2009
Location	Auckland
Hull Type	Monohull
Hull Material	Fibreglass (GRP)
Fuel Type	Diesel

Mechanical

Engine Type	Inboard
Engine Brand	John Deere
Drive Type	Shaft Drive
No. of engines	1
Horsepower	220 HP
Hours	1422 Hrs
Thrusters	Side Power
Cruising speed	8 Knots
Max. speed	10 Knots
Generator	Northern Lights 12Kw Generator - 1676 Hrs

Specifications

LOA	17.51M
Beam	5.05M
Draft	2.1M
Bridge Clearance	22.6M
Displacement	43000kg
Fuel	3000L
Water	1750L
Holding	285L

Accommodation

Cabins	3
Berths	6
Heads	2
Showers	2 + 1 Cockpit

On Deck

Tender	11ft tender
Outboard	Suzuki 15hp outboard (2020) + spare Honda outboard motor
Anchor	Aritox 105lb
Chain / Warp	400ft 3/8" chain

Features

Cruise Air 53,000 BTU Air Conditioning
Upgraded Bose Sound System
Cockpit BBQ Grill
2 x Furuno Nav Screens
AIS & Autopilot
Mahogany & Teak Interior woodwork



ORAKEI
MARINE

Drew Blair
+64 21 288 7555
drew@orakeimarine.co.nz

Jason Snashall
+64 21 929 592
jason@orakeimarine.co.nz

✔ Electronics

Separate genset (gas and water separator)
Mastervolt mass combi 24v inverter/charger
Inverter bypass switch
26 mile radar
Simrad AP24 autopilot
Remote anchor control
AIS system fitted (2020)
Integrated sounders
Furuno navnet system with 2x 3D screens

✔ Sails & Rigging

Working sail area 1,217sqft / 113m³
Selden mast and boom
Selden Super heavy-duty furling system for mainsail
Selden rod kicker system
Head Sail Roller Furler 400S furling system
Sails by UK Sails / North Sails (NZ)
Keep step ultra-system
120% cruising genoa – UV Leech and foot
Lewmar 55 2 speed winches
Lewmar self-tailing genoa winches
Lewmar commander 400 hydraulic tank with twin pumps (in situ but not commissioned)
2 x Main sheet winches

✔ Galley

Upgraded domestic size Fridge / Freezer
Sandstone Granite fleck countertops
Sharp Microwave Oven 50Hz

✔ Electrical Systems

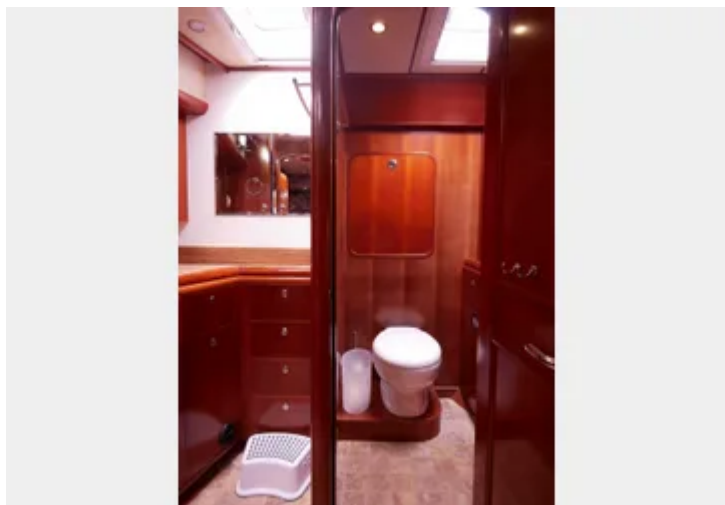
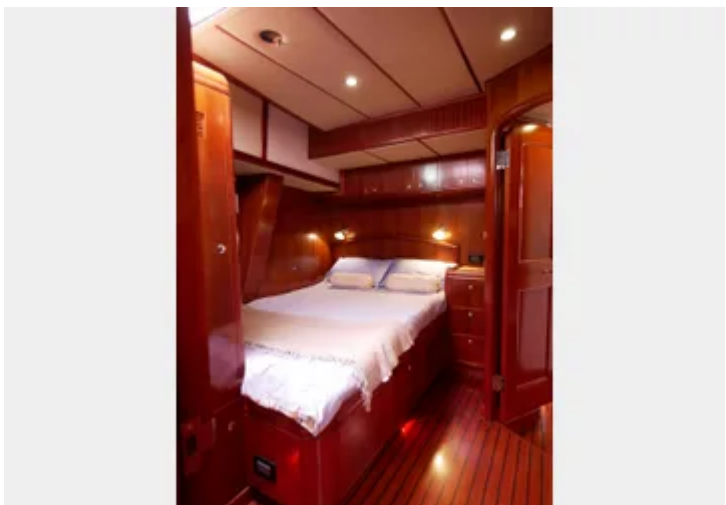
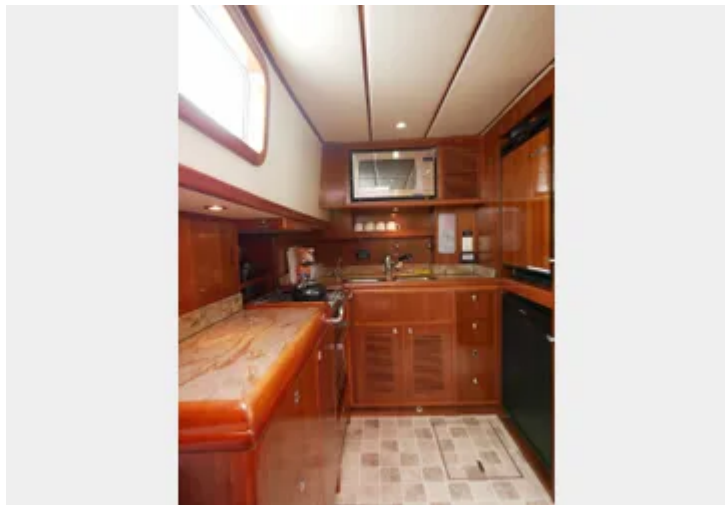
3 x Sony TVs
Upgraded Bose sound system
2 x 6-D Starting batteries
6 x 8-D House Batteries
Two shore power outlets
Shore power cord
Tri-colour mast lights
Northern Lights 12kw generator – 1,636 hours
Zinc bonding system

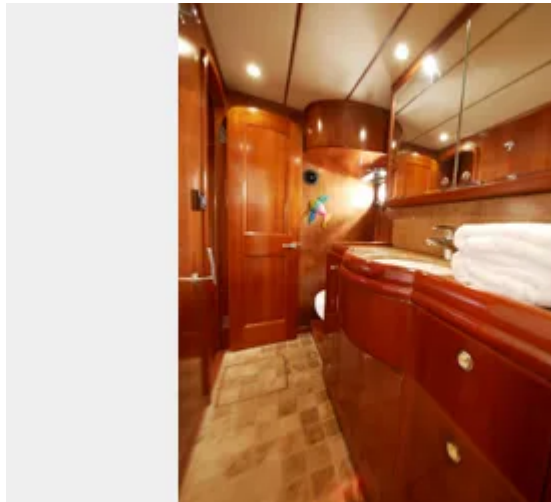
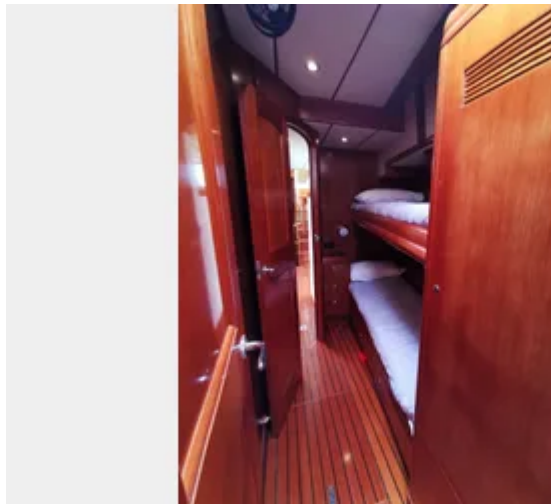
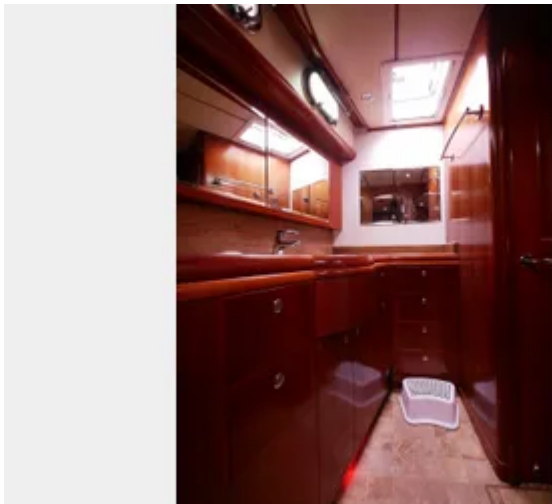
✔ Interior

Settee and chair upholstery in Ultraleather
Teak and African Mahogany flooring with satin varnish
Teak cabinetry/panelling with 60% gloss varnish
Aritox TV lift with cabinet - port side
2x Techma fresh water toilets
Stateroom fans

✔ Safety Equipment

Fire suppression system with engine shutdown and manual release
Fire suppression system in Lazarette
Racor Crankcase Venting system
Exhaust fan in Lazarette
Spur line cutters on propeller shaft
Fuel transfer system with fuel polishing





Your chance to own one of only nine made!

Luxurious in its quality and comfort unparalleled. Available now.

This 3 cabin Nordhavn 56 Motorsailer is beyond spacious and throws back to when Pacific Asian Enterprises built its Mason-designed sailing boats. This design takes another look at sail, but with added versatility and range to this trawler-like boat.

She has a host of features, including sailing cockpit, complete with helm station and controls for the power winches and roller-furling sails. It has the forward of a trawler-style saloon, wheelhouse and a trawler-style aft deck. The dash within the pilothouse and overhead panels are generously equipped with navigation and instrument controls. Port and starboard pilothouse doors provide access to the foredeck and spacious forward sailing cockpit.

She features a spacious saloon with seating to enjoy the view on both sides, plus fore and aft. Below the saloon is the master stateroom, and both staterooms include separate heads and showers.

Contact Orakei Marine to arrange a viewing today.

Disclaimer: Orakei Marine offers the details of this vessel in good faith but cannot guarantee or warrant the accuracy of this information nor warrant the condition of the vessel. A buyer should instruct his agents, or his surveyors, to investigate such details as the buyer desires validated. This vessel is offered subject to prior sale, price change, or withdrawal without notice.