

# Prestige 630F

\$3,199,000 NZD



## Near new, low hours, turnkey

Asking price is an estimated landed price for NZ, subject to shipping. Immediately available for delivery.

### Boat Details

Boat Type	Motor Yacht
Build	Prestige
Model	630F
Year	2018
Location	Offshore
Hull Type	Planing
Hull Material	Fibreglass (GRP)
Fuel Type	Diesel

### Mechanical

Engine Type	Inboard
Engine Brand	Volvo IPS 950 D11
Drive Type	Pod Drive
No. of engines	2
Horsepower	725 HP
Hours	750 Hrs
Thrusters	Bow
Cruising speed	24 Knots
Max. speed	29 Knots
Generator	18Kva Fischer Panda

### Specifications

LOA	19.03M
Beam	5.15M
Draft	1.39M
Bridge Clearance	7.03M
Displacement	33000kg
Fuel	2700L
Water	710L
Holding	346L

### Accommodation

Cabins	3 + Skipper
Berths	8 + Skipper
Heads	3 + Skipper
Showers	3 + Cockpit + Skipper

### On Deck

Tender	Chocks on Hydraulic Platform
Anchor	Factory Package
Chain / Warp	Factory Package

### Features

Hydraulic Platform
Low Hours
Gyro Stabilizer NG9
IPS Pod Drive w/ Joystick Controls
Priced ex-tax
Embossed Linen & Towels Set from Mona Lison



**ORAKEI**  
MARINE

**Drew Blair**  
021 288 7555  
drew@orakeimarine.co.nz

**Jason Snashall**  
021 929 592  
jason@orakeimarine.co.nz

✔ **Electronics**

3 x Raymarine Glassbridge 165 MFD Plotter at helm  
2 x Raymarine e165 displays at fly station  
Raymarine HD Digital Radar  
Raymarine AIS 650  
Raymarine P70r autopilot

✔ **Electrical Systems**

18Kva Fischer Panda Genset  
2000W Inverter 24-230v  
560 AH 24v House Battery Bank  
120 AH 24v Start Battery Bank

✔ **Flybridge**

Flybridge Galley Grill  
Flybridge Fridge w/ freezer  
Sunpad & Seating  
Teak Table & Teak Flooring

✔ **Interior**

Wenge Interior Woodwork  
3 Cabin + Skipper Layout  
Carpets + Pleated Blinds

✔ **Galley**

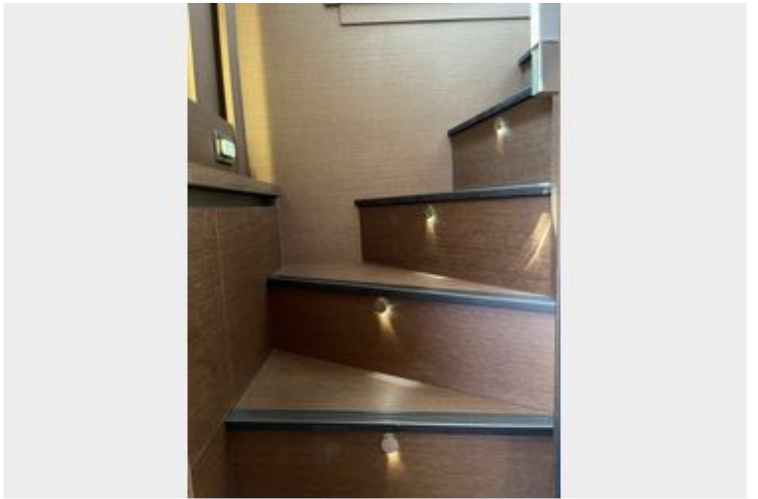
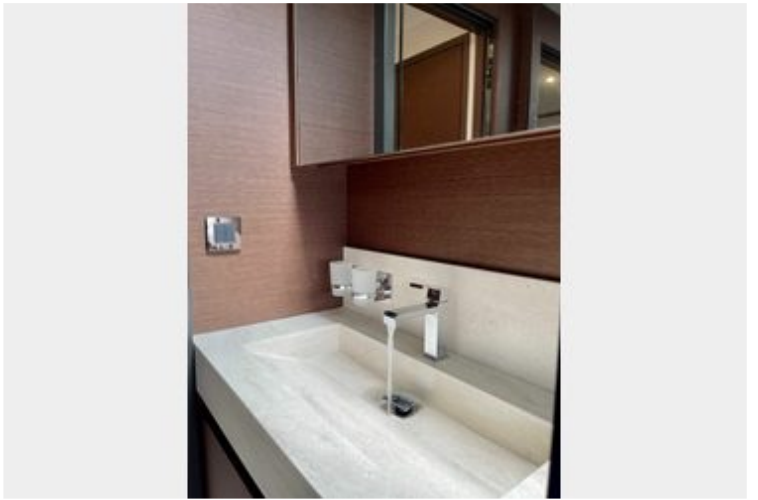
Corian Benchtop  
Microwave Combi Oven/Grill  
Domestic Size Fridge & Freezer  
Induction Cooktop

✔ **Comments**

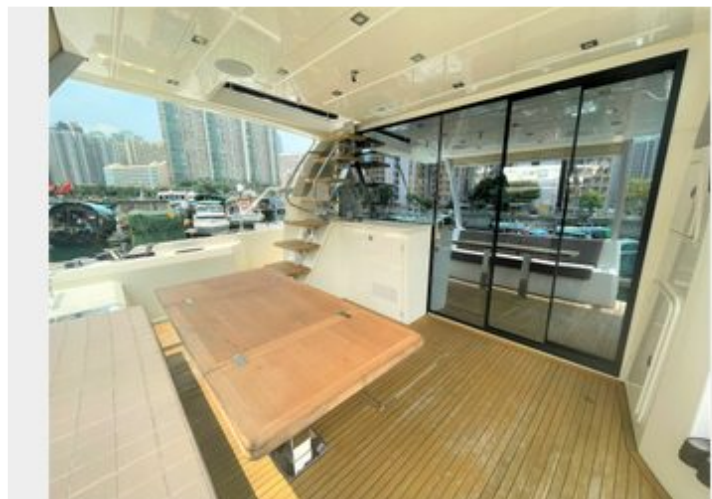
Ready for shipping to NZ in time for summer













## Near new, low hours, turnkey

Asking price is an estimated landed price for NZ, subject to shipping. Immediately available for delivery.

In partnership with the Prestige Dealer network, Orakei Marine is proud to present this Prestige 630F for sale to the New Zealand market.

**The boat is priced ex-tax lying offshore, asking price is an estimated landed price, subject to fluctuation, contact us for up to date quotes.**

Generous living spaces include the immense saloon, three cabins with private head and shower compartments, including a centre-line owner's cabin, and the flybridge, for absolute comfort on board.

Young second-hand boat with 750 engine hours, she is perfect for you to entertain family and guests! The flybridge is well equipped with a grill, sink and fridge, making your barbeques a lot easier on board! She comes with a tender too!

The PRESTIGE 630 can be recognized by her well-balanced exterior design with bold, clean lines and by the elegance of her bright interior layout. Generous living spaces include the immense saloon, three cabins with private head and shower compartments, including a centre-line owner's cabin, and the flybridge, for absolute comfort on board. By choosing high-tech design solutions, which was constructed by infusion, and the selection of an IPS 950 pod transmission, the PRESTIGE 630 is currently positioned at the cutting edge of technology. Luxurious interior furnishings reveal a selection of materials, colour harmonies and a level of equipment normally reserved for large cruising yachts.

### Additional Information

#### TRIM LEVEL

TRIM LEVEL EXCELLENCE 2018

Including:

Fischer Panda 18kva Genset

2000W inverter 24-230v

Electric courtesy curtain in cockpit

Electric mooring windlass on starboard

Forward sunpad with front sofa, foldable backrests + covers

Bed covers Dedale style

Villeroy & Boch dishes & cutlery for 8 pax

Prestige Towels

#### OPTIONS

Electronic Pack 2018 Raymarine

Including:

3 Glassbridge 165 displays at main helmstation + 2 e165 displays at fly station + HD digital radar + AIS650 +VHF 260 + P70r

Autopilot displays + CP370 sonar module

Mooring Kit

Anchoring Kit – Stainless Steel Anchor

Electro-hydraulic bimini on flybridge white + Aft extension

Letterbox Hydraulic Gangway

Hydraulic swim platform

Gyroscopic Stabilier Seakeeper NG9

Underwater Lights

Wine Cabinet Grey Oak

Ice Maker 230/50Hz

Combo Washing Machine/Dryer (11LBS)

Dishwasher

Air Conditioning for Skipper Cabin 6,000 BTU

Chilled Water Tropical Air Conditioning 99,000 BTU

Skipper Cabin

Safe  
Electric Deluxe Table in Saloon  
Hydroelectric Trimtabs  
Extra Joystick in Cockpit  
Waterproof speakers for forward sunpad  
BOSE watertight loudspeakers in cockpit + fly  
BOSE Audio System 600 Blu Ray  
Sat TV Pre-wiring reception  
40" TV LED Retractable in Saloon  
Reverse Camera on Fly + Thermal monitoring camera in engine room  
Porthole mosquito screens  
Teak floor on flybridge  
Brushed light oak hardwood floor for entrance and saloon

---

**Disclaimer:** Orakei Marine offers the details of this vessel in good faith but cannot guarantee or warrant the accuracy of this information nor warrant the condition of the vessel. A buyer should instruct his agents, or his surveyors, to investigate such details as the buyer desires validated. This vessel is offered subject to prior sale, price change, or withdrawal without notice.