

# Salthouse 105ft Motor Yacht – 1/7 Share

\$1,195,000 NZD



3 Shares Available - Price for each share includes the charter license & 35M Orakei Marina berth.

Get your slice of paradise onboard Pacific Mermaid, the fully managed 105ft Luxurious Salthouse motor yacht, berthed in the Orakei Marina.

## Boat Details

Boat Type	Motor Yacht
Build	Salthouse
Model	105 ft Motor Yacht
Year	1996
Location	Auckland
Hull Type	Monohull
Hull Material	Steel
Fuel Type	Diesel

## Mechanical

Engine Type	Twin Inboard
Engine Brand	Man V10
Drive Type	Shaft Drive
No. of engines	2
Horsepower	1120 HP
Thrusters	Yes - Hydraulic
Cruising speed	10 Knots
Generator	2 x Northern Lights

## Specifications

LOA	32M
Beam	7.5M
Draft	2M
Displacement	130000kg
Fuel	22500L
Water	6500L

## Accommodation

Cabins	4 Deluxe double staterooms + 3 additional cabins
Heads	9
Showers	7

## On Deck

Tender	AB 14 ALX Alumina
Outboard	50hp Yamaha
Anchor	Stainless steel
Chain / Warp	Chain

## Features

- Cruising Range 4000nm
- Fully Crewed
- Built to Lloyds International; Survey Standards
- Baby Grand Piano in Saloon
- Water maker
- Twin Gensets



**ORAKEI**  
MARINE

Scott Oldfield  
021 799794  
scott@orakeimarine.co.nz

Jason Snashall  
021 929592  
jason@orakeimarine.co.nz



✔ Electronics

Garmin

---

✔ On Deck (Additional)

Davit

2nd Tender

Stand Up Paddle Boards x2

Kayaks x2 Sea Biscuits x2

Dive Gear + Compressor & Fishing Rods x6

---

✔ Interior

Air Conditioning Throughout

Multiple TVs

Full Dedicated Bar

Integrated Sound System

---

✔ Galley

Full Galley

---

✔ Safety Equipment

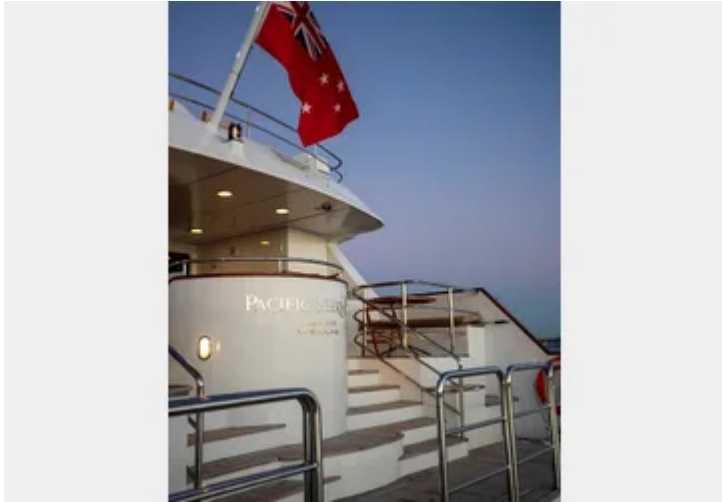
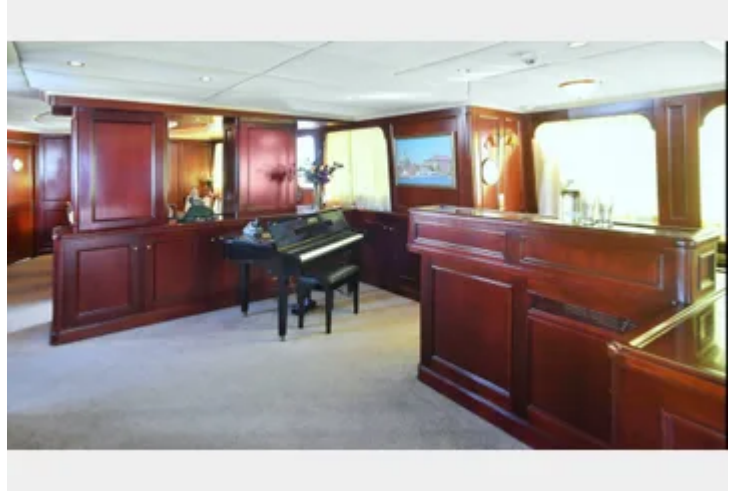
Life Raft

Life Jackets

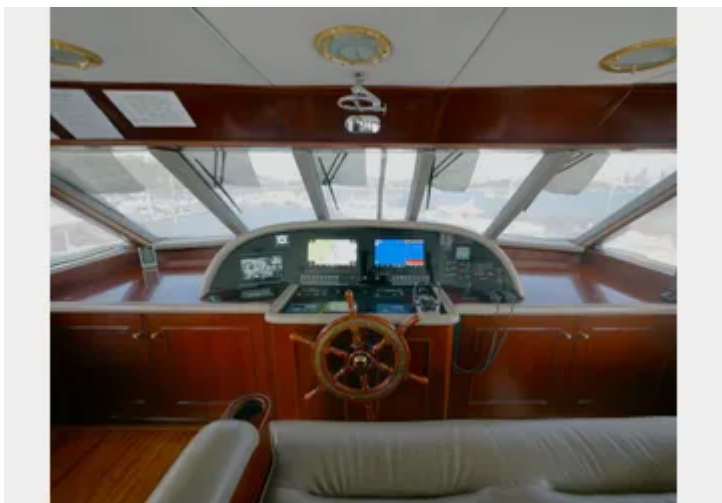
Epirb

Fire Suppression System

---



MAH3720





## 3 Shares Available - Price for each share includes the charter license & 35M Orakei Marina berth.

Get your slice of paradise onboard Pacific Mermaid, the fully managed 105ft Luxurious Salthouse motor yacht, berthed in the Orakei Marina.

This is your opportunity to own 1 or more of the 3 shares (of 7) available of the Luxurious 105ft Pacific Mermaid that is berthed at the Orakei Marina.

A custom built New Zealand Icon!

She has fully cruised New Zealand, Australia, Fiji and Europe with fully crewed upcoming destinations including Fiji and the Bay of Islands.

With her full-beam custom design, steel hull and aluminium superstructure and large displacement hull with stabilizers allows for a smooth ride at sea.

Powered by twin Man V10 diesel engines re-built in 2014-15 provides a cruising speed of 9-10 knots. Also equipped with twin Gensets and a Water Maker.

An extremely spacious interior with Rich Mahogany timber, 3 levels of entertaining space, large dining room, multiple lounges and fully equipped kitchen makes your time onboard and absolute pleasure.

Main Features:

- Fully crewed destinations in luxury.
- 4 Deluxe double cabins and 3 additional cabins.
- 7 Ensuites and 2 day heads.
- Cruising range of 4000 nautical miles.
- Baby Grand Piano in the saloon and full bar.

1/7 Share Includes:

- Price is excluding GST (zero rated, sold as a going concern).
- Current charter allocation is 30/40 days per year.
- Remaining days split between owners (approx 4 weeks per share).
- 4 year cruising plan between Auckland and the Pacific Islands.
- Charter license and 35m Orakei Marina berth.

For more information or to arrange a viewing, please contact one of our brokers today.

---

Disclaimer: Orakei Marine offers the details of this vessel in good faith but cannot guarantee or warrant the accuracy of this information nor warrant the condition of the vessel. A buyer should instruct his agents, or his surveyors, to investigate such details as the buyer desires validated. This vessel is offered subject to prior sale, price change, or withdrawal without notice.