

# Selene 62 Ocean Explorer

\$3,500,000 USD



## Boat Details

Boat Type	Pilothouse
Build	Selene
Model	62 Ocean Explorer
Year	2024
Location	Offshore
Hull Type	Monohull
Hull Material	Fibreglass (GRP)

## Mechanical

Engine Type	Twin Inboard
Engine Brand	John Deere
	4045AFM85
Drive Type	Shaft Drive
Horsepower	180 HP
Cruising speed	9 Knots
Max. speed	11 Knots

## Specifications

LOA	21.28M
Beam	5.69M
Draft	1.98M
Displacement	64863.71kg
Fuel	9614L
Water	2200L
Holding	757L

## Accommodation

Cabins	3 + 1 crew
Berths	6 + 1 crew
Heads	3 + 1 crew

## On Deck

Tender	Highfield Sport 420 tender
Outboard	Mercury SeaPro 60Hp
Anchor	100kg Ultra and 80kg Ultra
Chain / Warp	100m and 75m Chromox stainless chain

## Features

- 2 x Northern Lights generators (10 and 26 kw)
- Trac bow & stern thrusters
- Zero speed stabilizers
- Webasto A/C system
- 2Kw solar panels on hardtop with Victron mppt
- Bluefin underwater lights (2 units)



- Celebrating 20 Years -  
**ORAKEI**  
MARINE

**Jason Snashall**

021 929 592

jason@orakeimarine.co.nz

**Scott Oldfield**

021 799 794

scott@orakeimarine.co.nz

## ✔ Electronics

Furuno TZT2BB2 dual chartplotters 4x24" marine touch screens  
Furuno DRS12ANXT 6" main radar  
Furuno DRSD4NXT secondary radar  
SCX20 Satellite GPS  
PG700 heading  
Furuno Navpilot 300 autopilot and instruments  
Furuno DFF3D sounder  
Class A AIS SiTex  
Icom M605 main VHF  
Flir M304  
Syonix Nightwave night vision camera  
Secondary navigation system: Garmin GPSmap 8400 chartplotter,  
Panoptix forward looking sonar, Vesper Cortex VHF C AIS  
Starlink High performance antenna integrated with Peplink wifi  
system Peplink 5G dual router and external wifi  
Iridium Go Exec backup satellite comms

---

## ✔ Electrical Systems

2000 Ah Lifepo4 house battery  
2 x Victron 8kw Quattro inverters  
3 x Victron Skylar universal power input chargers  
Victron chargers for starting batteries  
220v/50hz on board power  
Data network cabling (CAT6) throughout

---

## ✔ Interior

55inch TV in Salon  
32inch TV in Master Cabin  
Fusion sound system  
Siemens i500 washing machine  
Siemens i500 heat pump dryer

---

## ✔ Safety Equipment

8 person life raft  
Storm cover on all salon windows and portholes  
Fireboy fire extinguisher with automatic shut off system  
Security camera system with movement recording

---

## ✔ On Deck (Additional)

Steelhead ES1500LB dinghy davit  
Twin Maxwell VWC3500 windlasses  
Hella LED flood lights aft, boat deck, sides and 2 forward spot  
lights ACR Search light

---

## ✔ Flybridge

Furuno TZT2BB chartplotter with 2 x 16" screens, Autopilot  
control, instruments, engine controls, thruster controls  
Large Gas grill and cooking burner  
Dockmate wireless remote yacht control

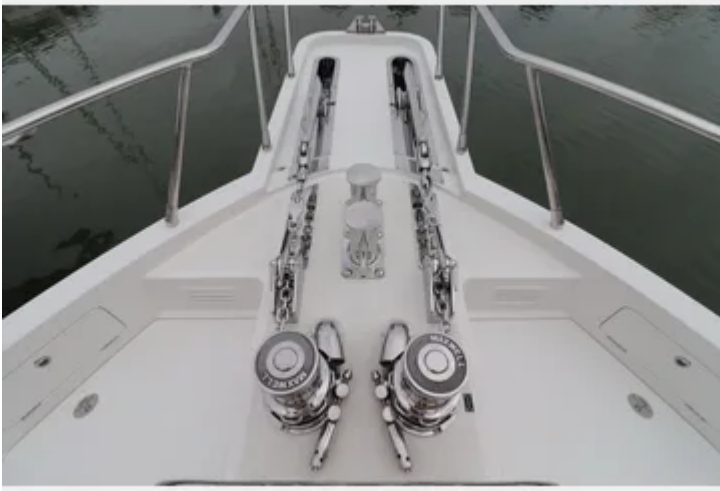
---

## ✔ Galley

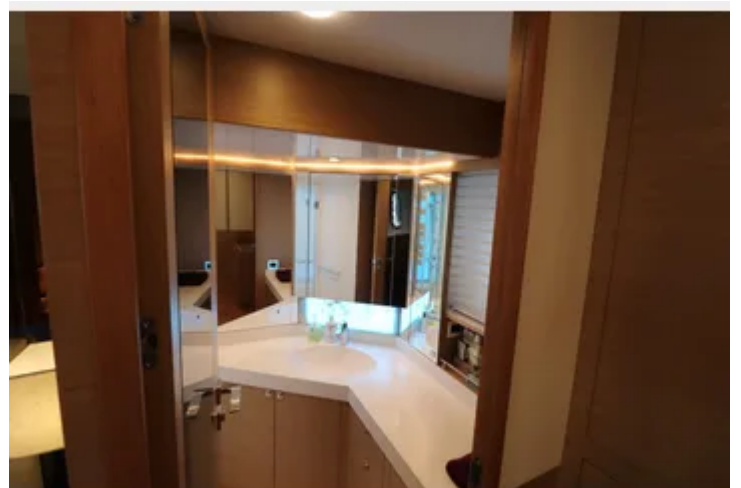
Siemens induction hob, oven, microwave, dishwasher, extractor  
Broan trash compactor  
2 x Liebherr integrated fridge freezer  
Siemens freezer in crew area  
Vitrifrigo Icemaker in cockpit

---















## About this vessel

This Selene 62 Ocean Explorer is powered by twin 180hp John Deere 4045AFM85 engines and carries over 9,000 liters of fuel, making it ideal for long-range voyages. It cruises at a comfortable 9 knots, with a top speed of 11 knots.

This yacht boasts a robust raised pilothouse, a Portuguese bridge, a spacious upper deck, and walk-around side-decks, all offering safety and convenience for guests of all ages.

Inside, the yacht features a beautifully illuminated, climate-controlled salon that offers luxurious comfort while providing expansive views of the surrounding nature.

On the lower deck, there are two guest cabins, a full-beam owner's suite, and a crew cabin with a private head. The crew quarters are linked to a large swim platform, which can be fitted with a hydraulic tender lift. The well-appointed interior provides ample space for relaxation and entertaining, ensuring a comfortable voyage for all aboard.

Combining style, advanced structural engineering, fuel efficiency, and exceptional performance, the Selene 62 Ocean Explorer is the ideal vessel for long-distance travel and diverse adventures in any environment.

---

**Disclaimer:** Orakei Marine offers the details of this vessel in good faith but cannot guarantee or warrant the accuracy of this information nor warrant the condition of the vessel. A buyer should instruct his agents, or his surveyors, to investigate such details as the buyer desires validated. This vessel is offered subject to prior sale, price change, or withdrawal without notice.