



Launched in 2000, RADIUM was built and has been maintained to a very high standard. She is ready to go!

14M OBC Marina Berth is also available for purchase.

### Boat Details

Boat Type	Launch
Build	Don Senior
Model	13.5m Sedan
Year	2000
Location	Auckland
Hull Type	Planing
Hull Material	Fibreglass (GRP)
Fuel Type	Diesel

### Mechanical

Engine Type	Inboard
Engine Brand	Iveco
Drive Type	Shaft Drive
No. of engines	2
Horsepower	330 HP
Hours	1370 Hrs
Cruising speed	18-20 Knots
Max. speed	26 Knots

### Specifications

LOA	13.5M
Beam	4.4M
Draft	1M
Fuel	800L
Water	500L

### Accommodation

Cabins	3
Berths	8
Heads	1
Showers	1 + 1 Cockpit Shower

### On Deck

Tender	Zodiac 300
Outboard	Suzuki 15HP
Chain / Warp	100M

### Features

Eberspacher Diesel Heater- Fully Ducted  
BBQ  
Stainless Steel Stern Rails with Large Bait Boards



**ORAKEI**  
MARINE

Scott Oldfield  
021799794  
scott@orakeimarine.co.nz

Drew Blair  
0212887555  
drew@orakeimarine.co.nz

## ✔ Electronics

Garmin Plotter/GPS  
Fish Finder- Furuno FCV 585  
Radar  
Autopilot  
VHF  
Chain Counter

---

## ✔ Interior

TV  
DVD  
Sat TV  
Stereo with Speaker System

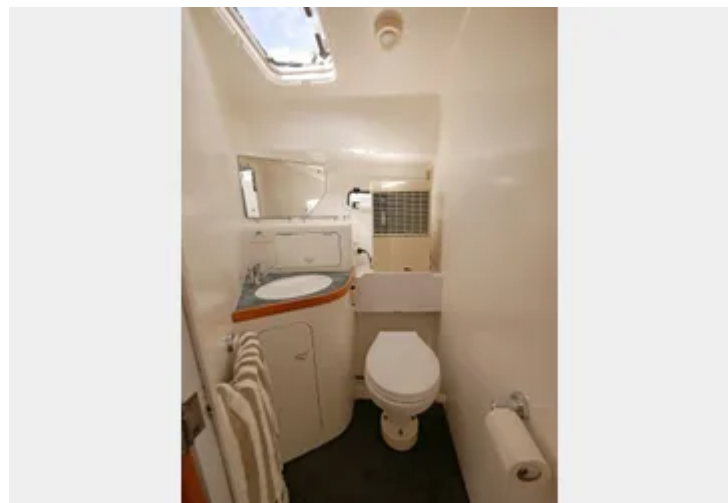
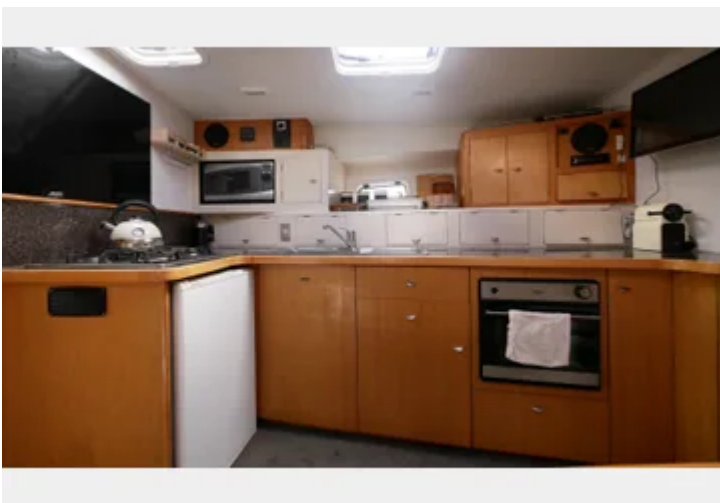
---

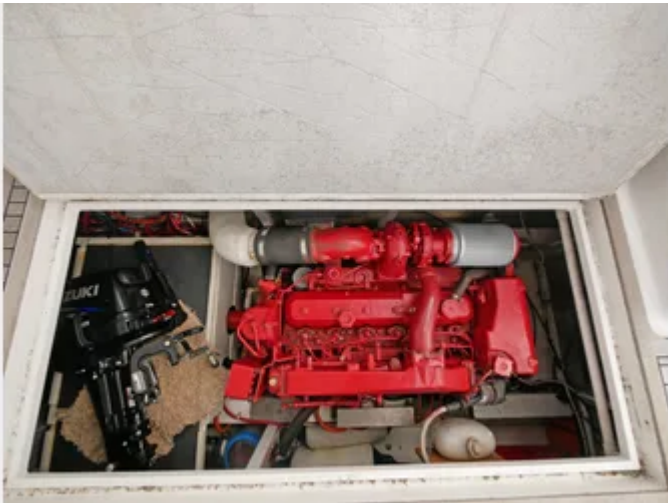
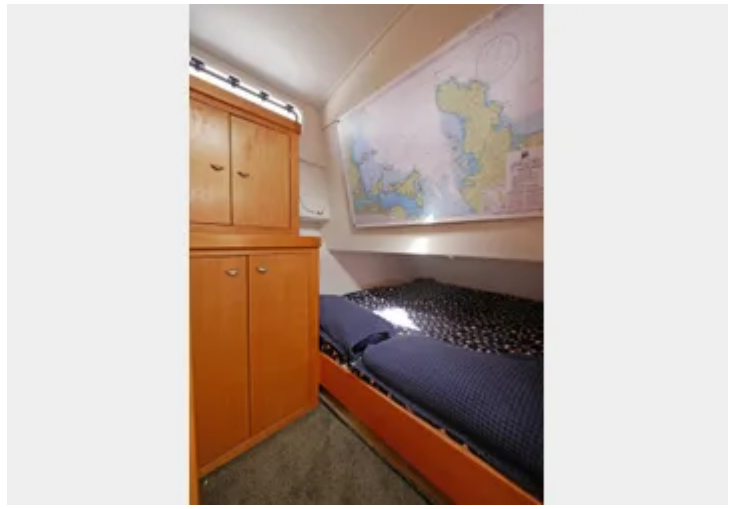
## ✔ Electrical Systems

1 Bulk Inverter/ Charger, 1 Pure Sine wave Inverter  
Batteries: 4x House at 440ah 12v  
4x 170W Solar Panels (680W) with MPPT Controller  
Water heater- Electric and Engine Driven

## ✔ Galley

1x Electric Fridge/ Freezer  
2x Compressor Driven Freezers  
1x Compressor Driven Fridge  
Stove  
Oven  
Microwave





Launched in 2000, RADIUM was built and has been maintained to a very high standard.

She is ready to go!

14M OBC Marina Berth is also available for purchase.

A perfect example of a 13m Don Senior! Powered by twin 330HP Iveco Engines and 800L fuel tank she offers exceptional range and has a cruising speed of 18-20 knots with a top speed of 26 knots.

This much loved vessel has been very well maintained over the years and is now time to move onto a New owner.

She has a large saloon with 3 large cabins- two double berths and one twin bunk room, accommodating for up to 8 people.

The galley is well equipped with a stove, oven, microwave, fridge and freezer.

The cockpit is very spacious and ideal for fishing, sunbathing, entertaining or just chilling out. She also has a very large foredeck that can also be great for sunbathing.

She has great storage on the hardtop along with a large bank of solar panels.

The vessel also comes equipped with a Zodiac Cadet 300 and Suzuki 15hp outboard engine.

She has recently been antifouled and propspeed and had New house August 2024 and start batteries installed last summer along with New shaft seals installed. Both engines have been serviced along with other maintenance work completed at the same time.

This is vessel looks great and is ready to go! Enquire today!

14M OBC Marina berth is also available to purchase as a package deal or separately after the vessel has sold.

Please contact one of the Orakei Marine team for more information on this vessel.

---

Disclaimer: Orakei Marine offers the details of this vessel in good faith but cannot guarantee or warrant the accuracy of this information nor warrant the condition of the vessel. A buyer should instruct his agents, or his surveyors, to investigate such details as the buyer desires validated. This vessel is offered subject to prior sale, price change, or withdrawal without notice.