



Located in Lower Swanwick UK but available for delivery to NZ

Boat Details

Boat Type	Pilothouse
Build	Fleming
Model	55
Year	2002
Location	Offshore
Hull Type	Monohull
Hull Material	Fibreglass (GRP)

Mechanical

Engine Type	Twin Inboard
Engine Brand	Cummins 450c - 6CTA 8.3
No. of engines	2
Horsepower	450 HP
Hours	1821 Hrs
Generator	1 x Onan MDKAD 13.5kva & 1 x Onan MDKAL 7.5kva

Specifications

LOA	18.50M
LWL	15.5M
Beam	4.88M
Draft	1.52M
Displacement	36368kg
Fuel	3785L
Water	1135L

Accommodation

Cabins	3
Berths	6 + 1
Heads	2
Showers	2

On Deck

Tender	Sur Marine ST 310
Outboard	Torqeedo Travel 1003 (2012)
Chain / Warp	90m 3/8

Features

Teak on foredeck, side decks, aft deck and swim platform
Teak rail capping
Nautical Structures MC800 davit
Bow thruster - Sleipner 6000
Stern thruster - Sleipner SE150



ORAKEI
MARINE

Jason Snashall
021 929592

✔ Electronics

Autopilot - Simrad AP70
VHF Radios - ICOM 601 and ICOM 503
iNavConnect wifi router
Chart Plotter – Furuno NN3D, Black Box NN3D
Chart Plotter - Garmin GPS 152
Charts – Raster and Vector (English Channel and Atlantic Coast Europe)
Radar - Furuno 2117
Hynautic twin lever engine controls
Bennett trim tabs
Telephone system - Panasonic KX-TEA 308 with 7 extensions
Compass - Furuno ST50 (3 aerial) Fluxgate
Compass - Furuno PG500
Radar Reflector - Echomax
Transducers - Airmar 1 x DST800 and 1 x UDST800
FLIR thermal camera - M618CS Screens - Hatteland 2 x 19"; 2 x 12"; 1 x 12" high bright Instruments - 4 x B&G Triton T41
Panasonic TV LED TX-24FS500B
Satellite TV
Intellian i3 Satellite TV decoder
Sony BDPS1700.CEK Blu-Ray player
Humax 500GB Blu-Ray player
Bose Hi-Fi Lifestyle 20 + subwoofer
2 x Bose Wave AWRC3G Radio with CD player

✔ Electrical Systems

Batteries - Lifetime AGM (2024)
Isolation transformers - for both forward and aft shore supply
Inverter - Phoenix Multi 24/2500/70 (ship supply)
Inverter - Victron 24/350w (telephone system)
Battery charger - Mastervolt Charge-master 24/100-3 & Mastervolt Ivo-smart 12/15-2
Auto charging relay - Blue Sea Auto charging relay 7611 (to parallel the alternators)

✔ Galley

Galley worktops - Granite (Galaxy)
Sink with mixer tap
Water carbon filter/purifier to all fresh water supply outlets including fridge
InSinkErator food waste disposer
Amana SXD522VE fridge/freezer
NEFF B46C74N3GB oven
De Dietrich 714v hob
Panasonic NN-V653C microwave oven
Broan electric trash compactor
Dumbwaiter - dual access tray from Galley & flybridge

✔ On Deck (Additional)

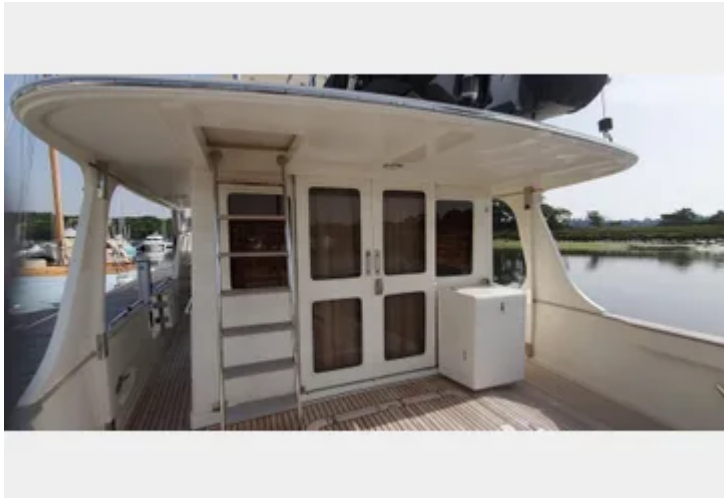
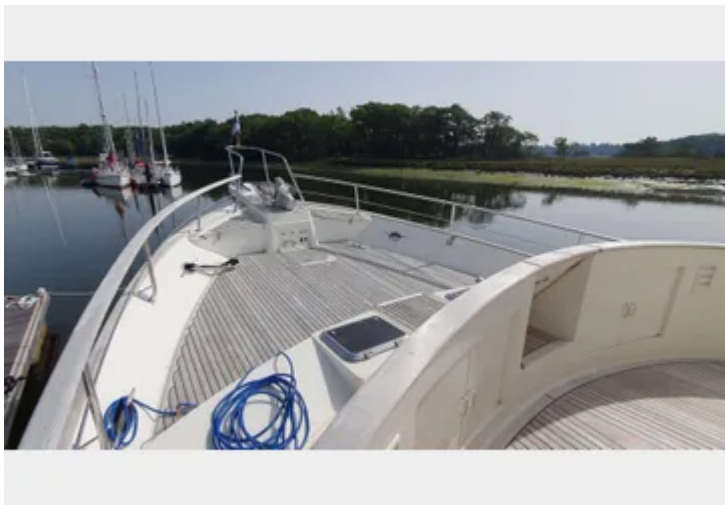
Stainless steel telescopic swim ladder
Starboard side locker with engine start stop, thrusters control and fire system remote pull
Hot and cold cockpit shower fitting
Shorepower inlet
Phone line inlet
Lighting under coaming skirt
Deck rear-view cameras connected to Hatteland display
2 Additional aft cleats (2021)
Portuguese bridge opening door to forward deck
Lofrans 24v DC windlass with pendant control and remotes in pilothouse and flybridge
Cover for tender (2020)
Flush lazarette hatches with hinges, gaskets, locks and drainage gutters

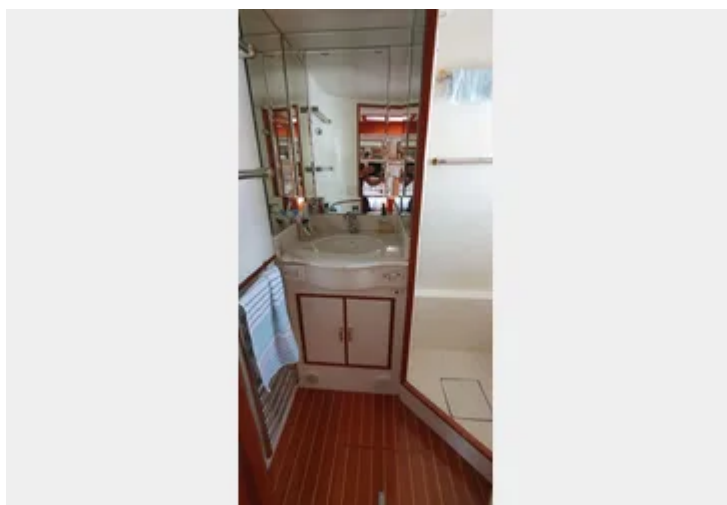
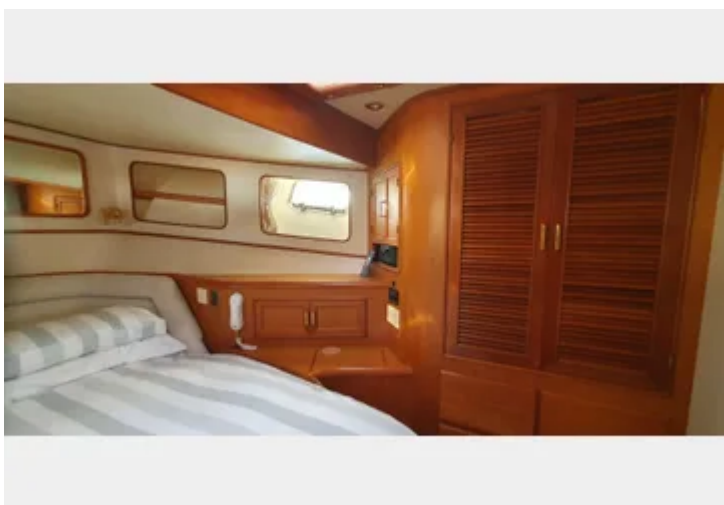
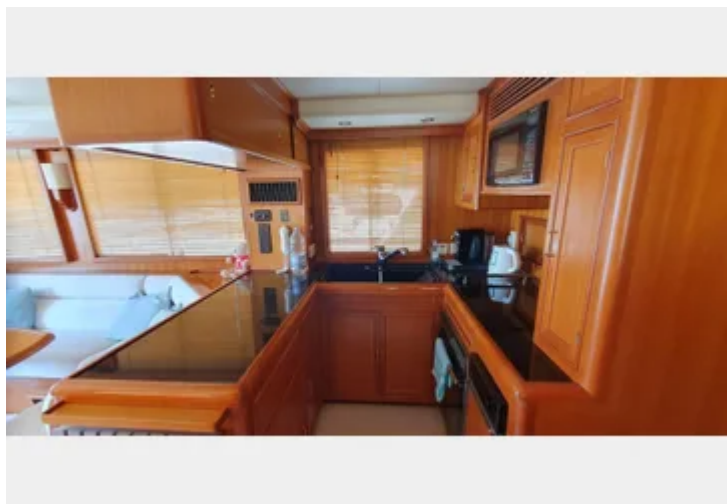
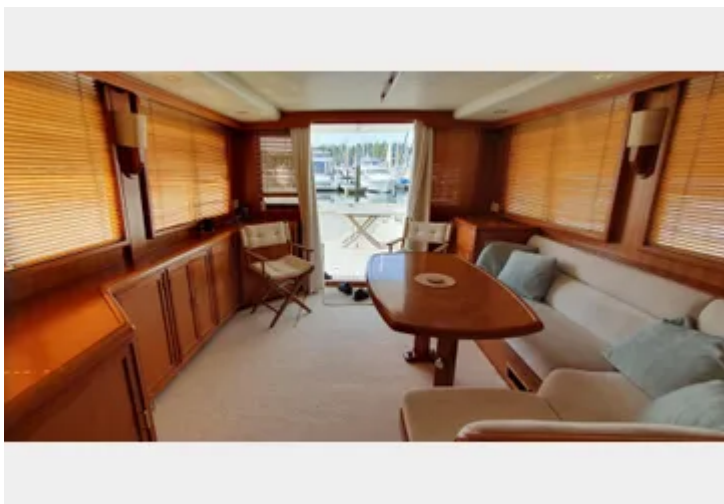
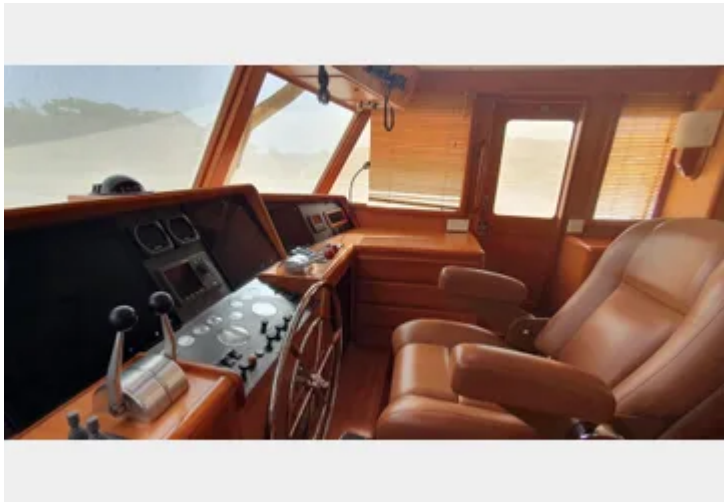
✔ Interior

Cruisair reverse cycle air conditioning throughout
Heating - Webasto hot water central heating with bespoke saloon radiator (2012)
Master cabin forward with double berth, ensuite shower/head, 2 x hanging lockers
Port cabin with twin berths which slide together to make a double, hanging locker
Starboard cabin with twin bunks & custom fold down desk worktop
Washing machine - Bosch in passageway
Tumble dryer - Bosch in passageway
Hi-Lo Teak dining/coffee table

✔ Safety Equipment

McMurdo Smartfind G5 Plus 406 MHz EPIRB
Liferaft - Plastimo Transocean 6 person with hydro-static release
Fire Extinguishers (8) Engine room - Sea-fire FM 200; 2kg Powder & 2 x Heat detectors Lazarette - 2kg Powder Pilot House - 2kg Powder Saloon - Fire blanket & 2kg CO2 Master, Guest & 3rd cabin - 1kg Powder, each





Located in Lower Swanwick UK but available for delivery to NZ

This vessel has undergone significant upgrades under both of her owners and comes with a detailed history of maintenance and improvements.

UPGRADES SINCE NEW:

2003 – Stabiliser upgrade enabling operation from either engine, custom anchor ball mast (removable), Ambassador rope strippers, dimmable red & white lighting for the PH

2007 – Custom rails around mid and aft cap rails

2008 – Avon 315R dinghy

2009 – Saloon re-upholstered, new saloon window locks

2010 – High efficient bow thruster props, stern thruster

2012 – Torqeedo Travel 1003S outboard, custom pony mast, STIDD helm seat, Kahlenberg D-1 (custom modified) with controller, complete new commercial electronics, Sat TV, new bimini assembly and cover, custom foldaway desk for the 3rd cabin, custom teak hob cover, custom wine drawer, Lifeline AGM batteries, Webasto hot water heating and bespoke saloon radiator, electric towel rails in the heads, telephone system with external phone line connection capability, CISCO router for ADSL wifi, video cameras (port, starboard, aft and engine room), auto-lighting in the PH electrics bays

2014 – Water drains fitted to the fridge/freezer and forepeak tap supplies, flybridge helm seat recovered

2015 – New winter curtains

2016 – Fresh water carbon filter for all supply including fridge/freezer, lattice grill in the small cupboard above the fridge/freezer, USB socket, auto lights and shelving within the cupboard under the galley sink, auto lights within the PH electrics bays

2017 – Neff oven, master cabin headboard recovered, new spring mattress for the master cabin

2019 – New saloon and companionway carpets, quick release couplings to the fresh and salt water pumps, new horseshoe life rings and lights, new FB covers (console & pilot seat), new PH screen mesh covers, new Plastimo Transocean 6 person liferaft & hydrostatic release

2020 – 220v LEDs on the AC & DC services panels replaced with 240v LEDs, panel added to display voltage of each battery bank & each 12v batteries, starboard engine Grocco sea-cock, new FB hatch cover, new PH skylight hatch fitted

2021 – 2 x additional aft main cleats, new guest cabin and 3rd cabin carpets, port engine Grocco sea-cock, new cutlass bearings and shaft seals (Gortex), new stainless steel gas springs to the davit, davit removed and re-powder coated, trim tabs reinforced, new dinghy cover, cap rails re-sealed, new glass to master cabin hatches (frames re-sealed), dock pure system (for filling water tanks), FLIR M618CS camera, spring mattresses for the guest cabin, aft cockpit mooring line and shore power cable tidies, 2nd Onan generator, PH oilskin cupboard, guest cabin twin / double bunk assembly, ABT Trac hydraulic stabilisers, 1" sea-cock for a water-maker, additional 2 x 8D batteries for the Bank No 2 (4 total)

Disclaimer: Orakei Marine offers the details of this vessel in good faith but cannot guarantee or warrant the accuracy of this information nor warrant the condition of the vessel. A buyer should instruct his agents, or his surveyors, to investigate such details as the buyer desires validated. This vessel is offered subject to prior sale, price change, or withdrawal without notice.