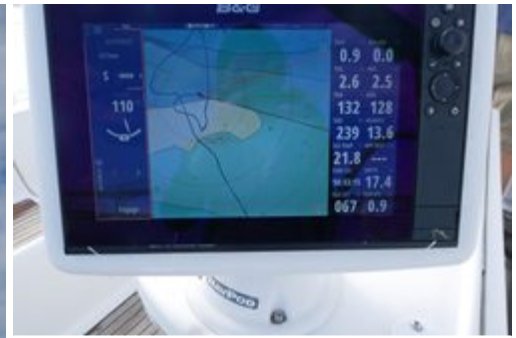


Jeanneau Sun Odyssey 45

\$250,000 NZD



Lola is on the market and ready to cruise!

A spacious cruiser with room for the whole family! This Sun Odyssey 45 offers uncomplicated sailing for new boaties, young families or even experienced sailors.

Boat Details

Boat Type	Cruising Yacht
Build	Jeanneau
Model	Sun Odyssey 45
Year	2005
Location	Auckland
Hull Type	Monohull
Hull Material	Fibreglass (GRP)
Fuel Type	Diesel

Mechanical

Engine Type	Inboard
Engine Brand	Yanmar
Drive Type	Shaft Drive
No. of engines	1
Horsepower	75 HP
Hours	5914 Hrs
Cruising speed	7 Knots
Max. speed	10 Knots

Specifications

LOA	13.72M
Beam	4.37M
Draft	2.1M
Displacement	9900kg
Fuel	240L
Water	450L

Accommodation

Cabins	3-4
Berths	10
Heads	2
Showers	2+1 Cockpit Shower

On Deck

Tender	AquaPro SMR 2.7 RIB
Outboard	Suzuki 2.5HP 4 Stroke
Anchor	Manson Supreme Anchor
Chain / Warp	90m

Features

Twin Helm
Furling Headsail
Single Line Reefing
Spare Anchor
Mooring and Spring Lines



ORAKEI
MARINE

Scott Oldfield

021799794

scott@orakeimarine.co.nz

Drew Blair

0212887555

drew@orakeimarine.co.nz

✔ **Electronics**

B&G Navigation Pack and Instruments
GPS
Chartplotter
Autopilot
Wind Instrument
Stereo
VHF

✔ **Electrical Systems**

3X House Batteries 1X Start Battery NEW 2023
220 AC Voltage, Shore Power
12 DC Voltage

✔ **Interior**

Large Saloon with Chart Table
3-4 Cabin Option
2x Heads
Clock and Barometer

✔ **Safety Equipment**

Safety Harness x8
2020 Flare Pack (Coastal)
First AID Kit
10 Man Liferaft
Fire Extinguishers x3

✔ **On Deck (Additional)**

Lewmar Winches
2x Tool Boxes
2x 25L Fuel Jerry Cans
Kayak
Tender Powered by Suzuki 2.5HP Outboard
Large Folding Cockpit Table

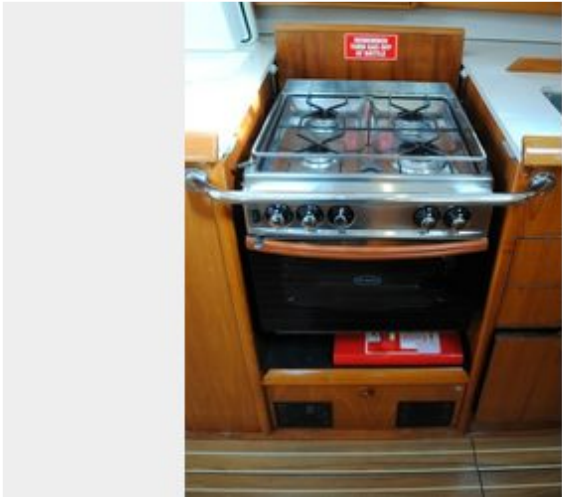
✔ **Sails & Rigging**

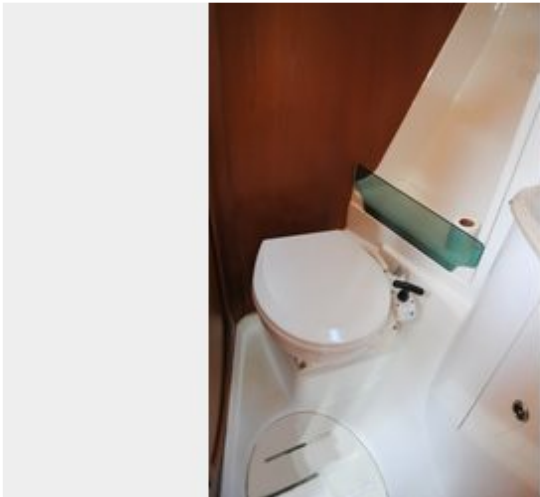
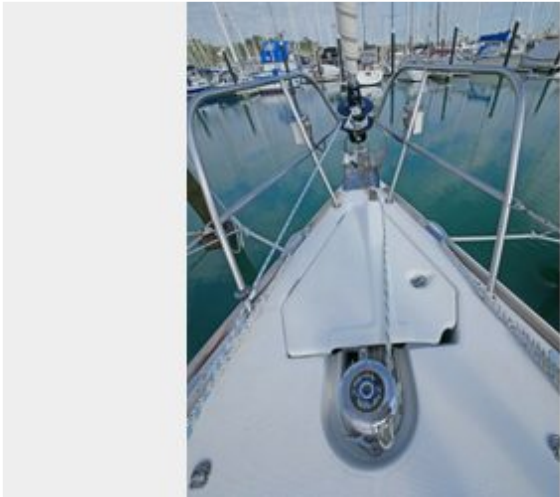
Mainsail Fully Battened Single Line Reefing to Cockpit
Genoa
Gennaker
Spinnaker Pole
Primary Winches Harken 53 x2
Winch Handles
Sail Repair Items

✔ **Galley**

Eno 4 Burner Oven
Large Fridge/ Freezer







Lola is on the market and ready to cruise!

A spacious cruiser with room for the whole family! This Sun Odyssey 45 offers uncomplicated sailing for new boaties, young families or even experienced sailors.

Shipped to NZ in 2015 this Jeanneau Sun Odyssey 45 has been very well maintained and is in excellent condition for its age. The timber retains its original rich feel and appearance. She has been serviced annually and had many upgrades including new B&G electronics and new house and start batteries.

She is currently set up as 3 cabins, but by adding the removable bulkhead to the center of the fwd cabin it splits it into 2 cabins making the total of cabins 4 to allow extra room for the whole family or a large group of friends. The saloon table can also drop down to make the total number of berths 10. The large saloon offers a spacious living and dining space as does the cockpit for Al fresco dining during the warmer months.

One of the key features of this cruiser is how easy and safe she is to sail! All the lines rum back to the cockpit, including single line reefing and a furling headsail, perfect for short-handed crew or those sailing with children. The mainsail bag held up by lazy jacks, allows the mainsail to lower neatly so packing up takes no time.

The twin helm is also another key feature not only making for easy sailing but also opens up the cockpit onto the sugar scoop bathing platform for easy access for swimming or sunbathing.

This Sun Odyssey 45 ticks all the boxes for those looking for easy, uncomplicated cruising with vast living spaces to enjoy.

To arrange a viewing please contact one of the Orakei Marine brokerage team today!

Disclaimer: Orakei Marine offers the details of this vessel in good faith but cannot guarantee or warrant the accuracy of this information nor warrant the condition of the vessel. A buyer should instruct his agents, or his surveyors, to investigate such details as the buyer desires validated. This vessel is offered subject to prior sale, price change, or withdrawal without notice.